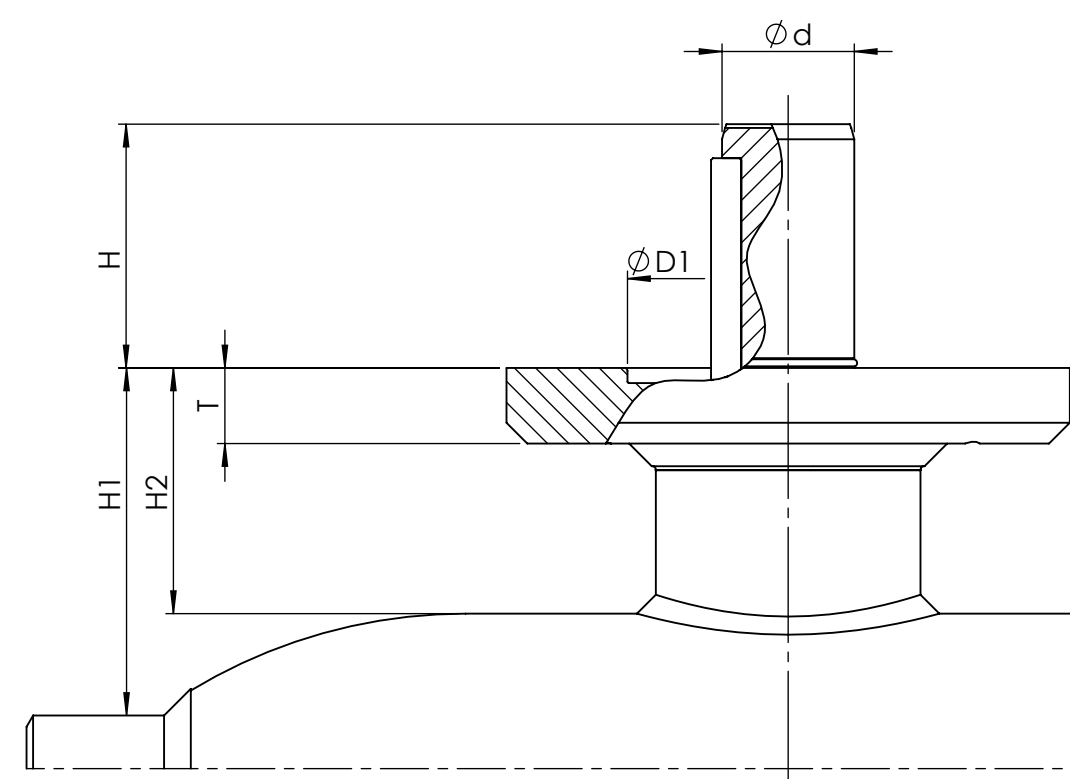
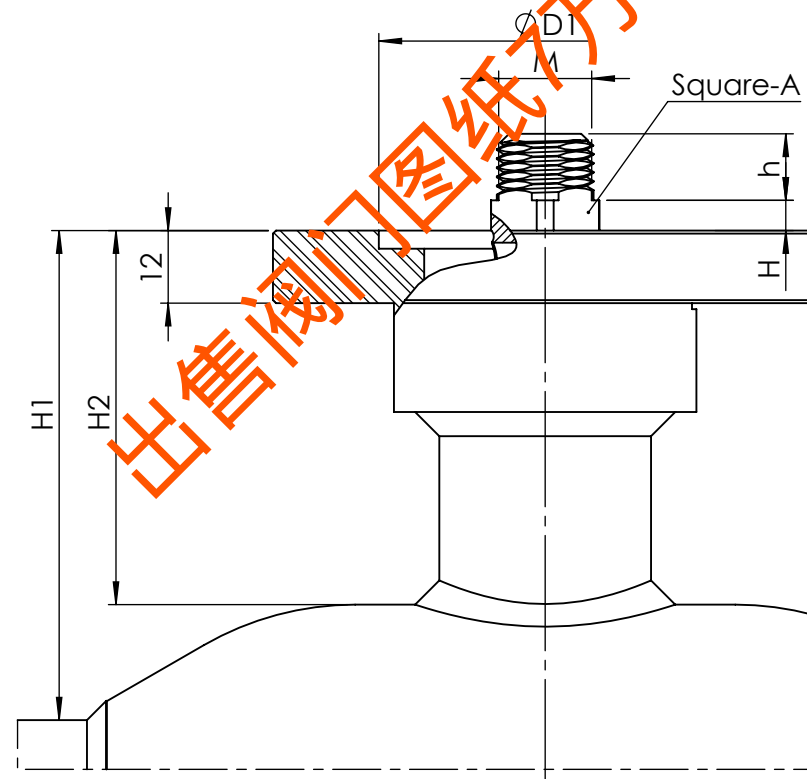
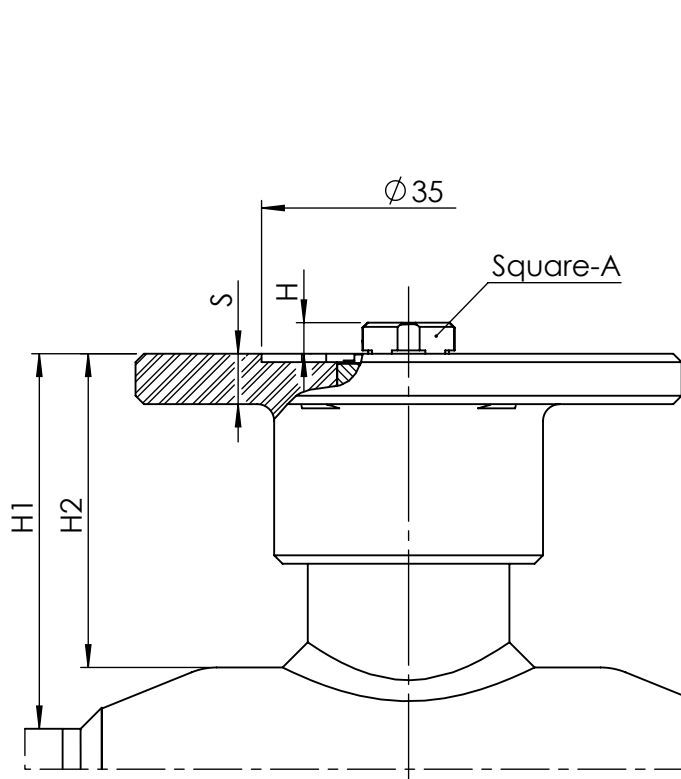
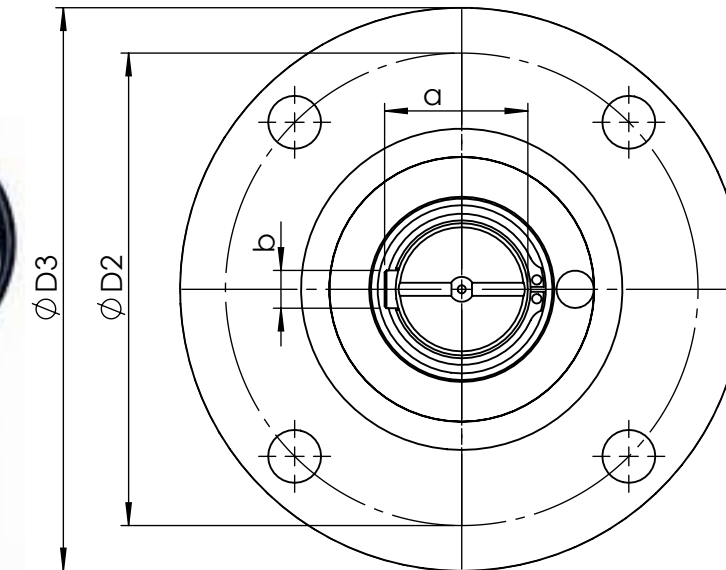
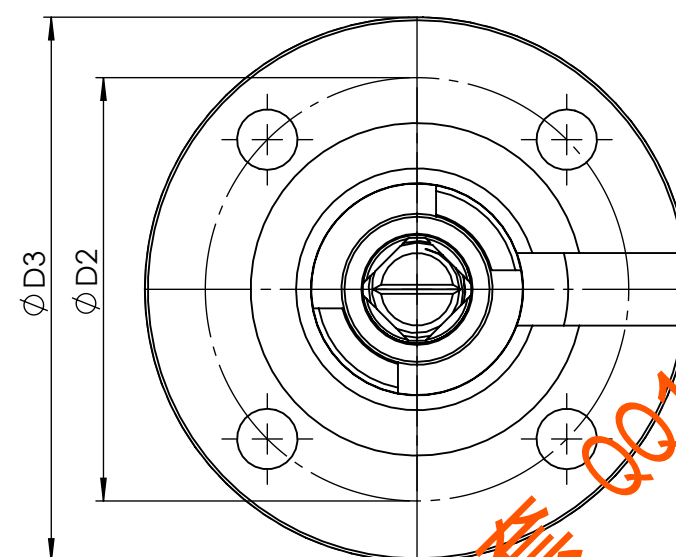
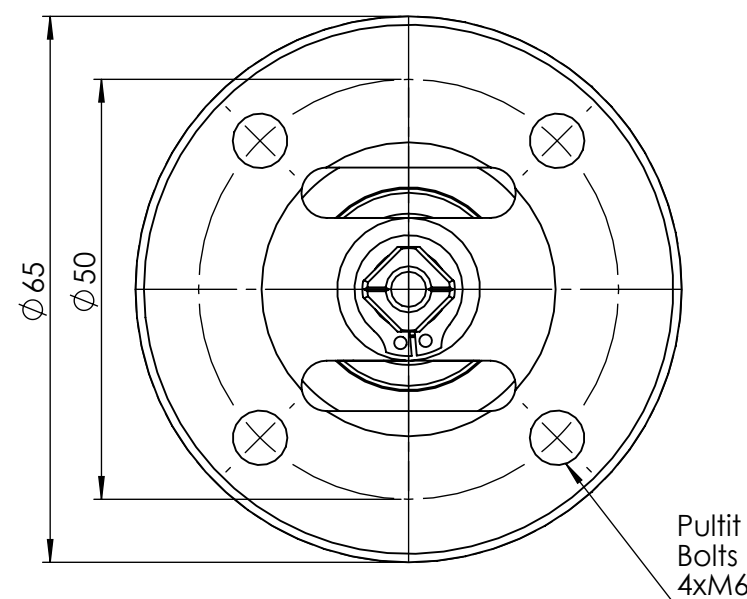


DN	H	S	A	H1	H2	LAIPPA FLANGE ISO5211
15	4,3	5	7	26	20	F05
20	4,3	5	7	28	20	F05
25	3,7	6	9	45	37	F05
32	3,7	6	9	44	35	F05
40	5,2	8	11	64	50	F05
50	5,2	8	11	64	50	F05
Toler.			-0,1			

DN	H	h	A	M	H1	H2	D1	D2	D3	Pultit Bolts	LAIPPA FLANGE ISO5211
65	5	11	14	M16x1,5	81	62	55	70	90	4xM8	F07
80	5	11	14	M16x1,5	87	62	55	70	90	4xM8	F07
100	7	11	16	M16x1,5	108	81	55	70	90	4xM8	F07
125	15	14	20	M20x1,5	108	89	70	102	125	4xM10	F10
150	15	14	20	M20x1,5	114	89	70	102	125	4xM10	F10
Toler.			-0,1								

DN	H	Ød	T	H1	H2	a	b	D1	D2	D3	Pultit Bolts	KIILA KEY	LAIPPA FLANGE ISO5211
200	64,5	35	20	92	65	38,0	10	85	125	149	4xM12	A-10x8 - 63	F12
250	79	40	20	108	67	43,0	12	100	140	179	4xM16	A-12x8 - 80	F14
300	88	50	20	132	67	53,5	14	130	165	209	4xM20	A-14x9 - 90	F16
350	80	50	20	192	116	53,5	14	130	165	209	4xM20	A-14x9 - 80	F16
400	110	70	25	242	141	74,5	20	200	254	300	8xM16	A-20x12 - 100	F25
500	115	90	40	259	183	95	25	230	298	350	8xM20	A-25x14 - 100	F30
600	115	90	40	274	173	95	25	230	298	350	8xM20	A-25x14 - 100	F30
Toler.		-0,1											



VEXVE-VENTTIILIEN DN15-600 KAROJEN LIITOSMITAT TOIMILAITTEITA VARTEN  
COUPLING DIMENSIONS FOR THE STEM OF VEXVE BALL VALVES DN15-600 WITH ACTUATORS

Drawn by 08.12.10TT  
Desd by 05.06.08JV  
Chkd by JR  
Appd by. EH

VEXVE

Pajakatu 11 FI-38200  
VAMMALA FINLAND  
Tel. +358 10 7340 800  
Fax +358 10 7340 839

File: Toimilaitelaippojen mitat 09092013

PALLOVENTTIILIEN TOIMILAITELAIPAT  
TOP FLANGES OF THE BALL VALVES