

A close-up photograph of two hands holding a torch. The hand on the left is positioned as if lighting the torch, while the hand on the right holds the handle. The torch has a dark, textured body and a bright, glowing flame at the top. The background is a plain, light-colored surface.

**YOUR PARTNER IN
ACHIEVING EXCELLENCE**

卓越之路 真诚伙伴



SGS 瑞士通用公证行集团

SGS is the
world's *leading* :

全球规模最大的，
专门从事以下服务：



Testing
检测



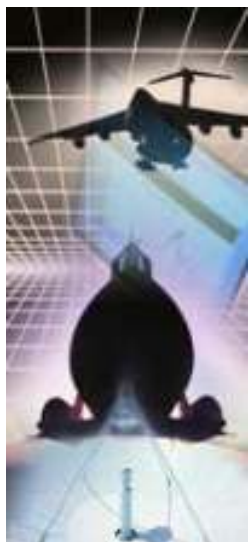
Inspection
检验



Certification
认证

Worldwide Network and One-stop Services

全球网络、一站式服务



Founded in 1878 with 130 years history

SGS 创建于 **1878**, 具有 **130** 年历史

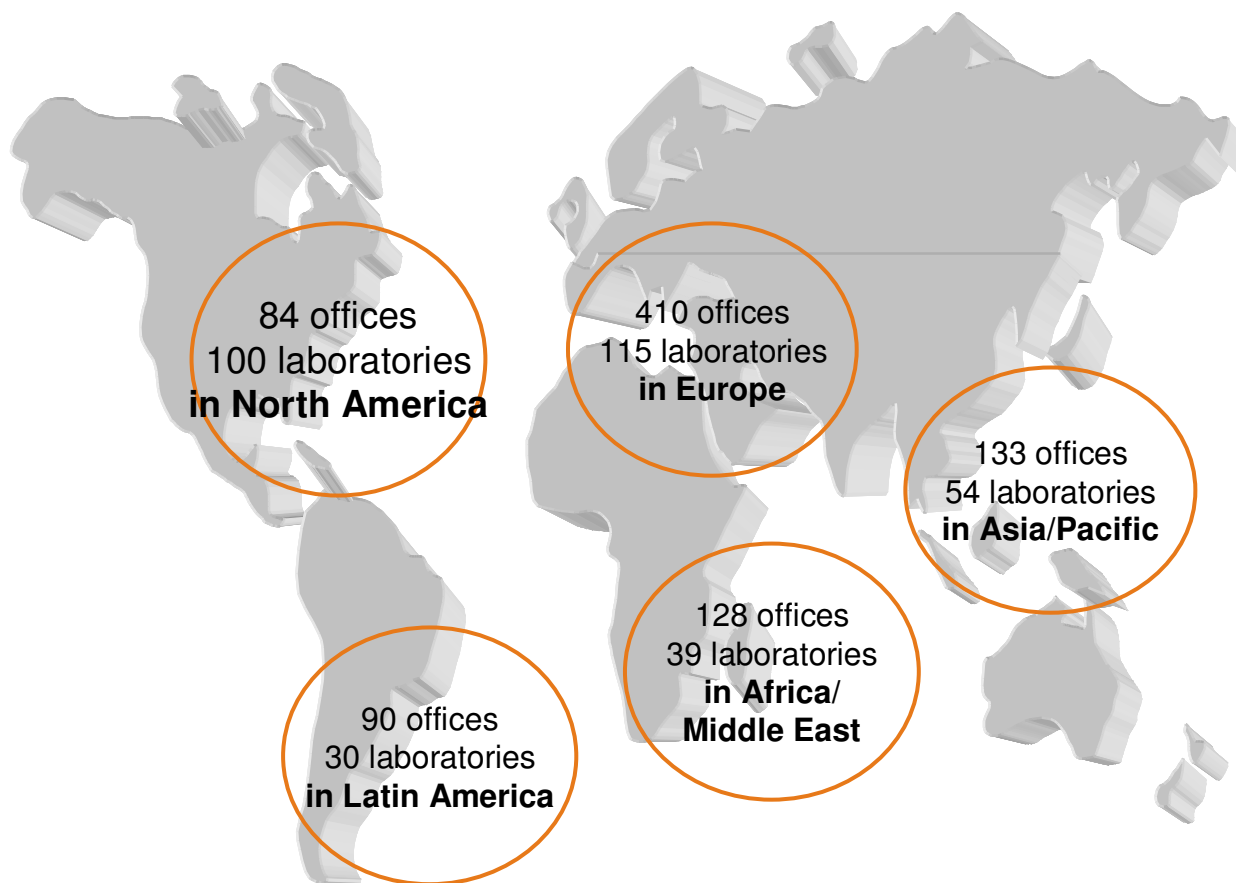
• 1000 Offices

1000 多个分支机构

• 46,000 Experts

46,000 多名职员

SGS Group



Milestones 里程碑



SGS business segments



**Agricultural
Services**



**Automotive
Services**



**Consumer
Testing
Services**



**Environment
al Services**



**Industrial
Services**



**Minerals
Services**



**Oil, Gas &
Chemicals
Services**



**Systems and
Services
Certification**



**Technical
Staffing
Services**



**Trade
Assurance
Services**

Branches in China

专业人才，无所不在

27 个分支机构和办事处

30 多间实验室

4800 名员工

Over 27 Branches and offices,

30 Laboratories and

4800 Staffs



Consumer Testing Service

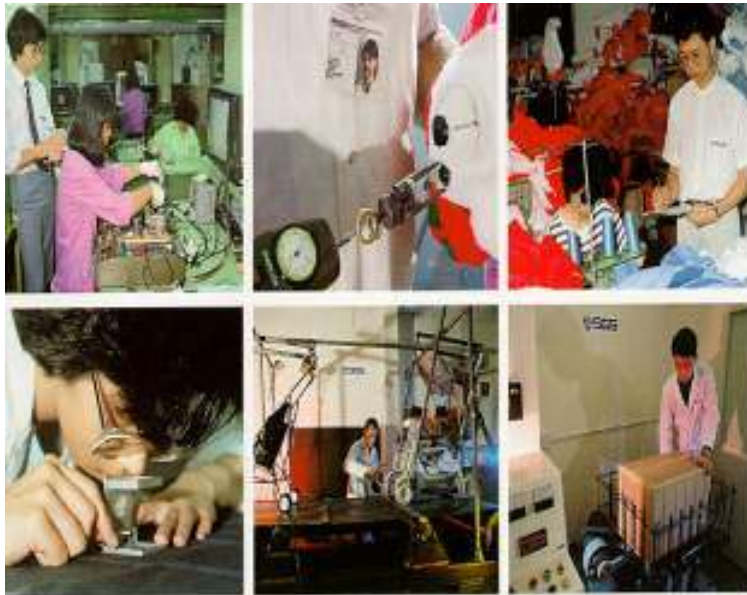
Introduction



WHEN YOU NEED TO BE SURE

SGS

Service Coverage - Inspection

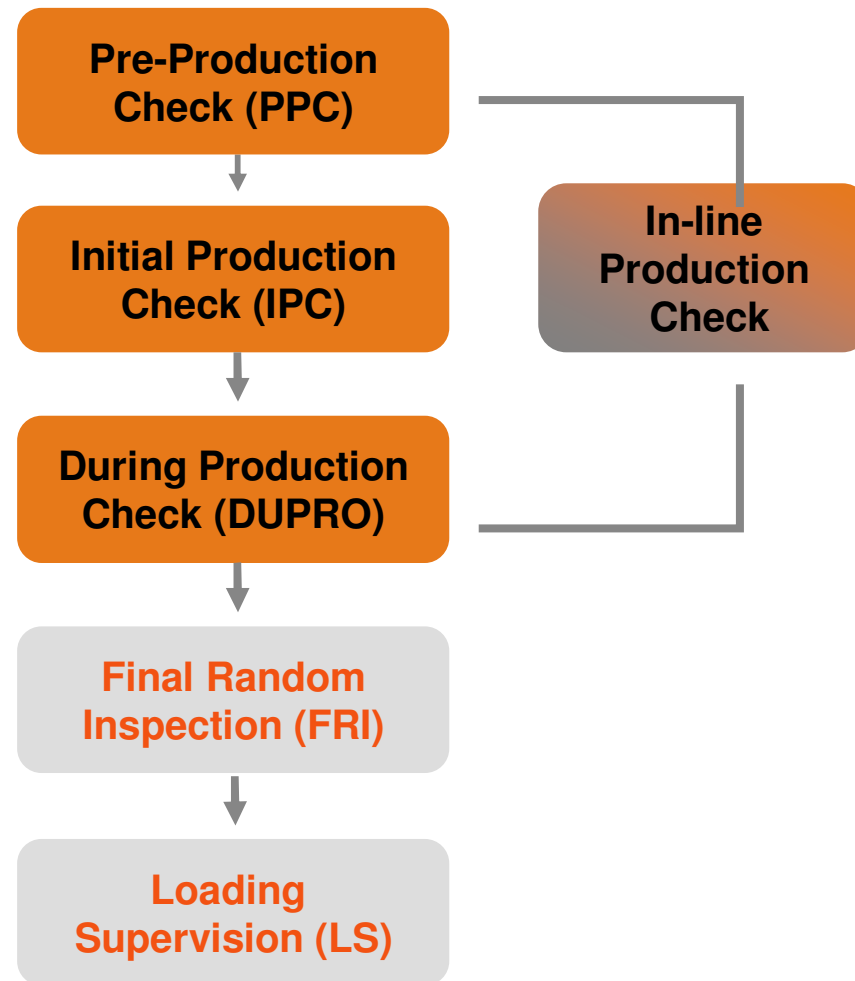


- Pre-Production Check
- Initial Production Check
- During Production Check
- Final Random Inspection
- Container Loading Supervision

WHEN YOU NEED TO BE SURE



Service Coverage - Inspection



Service Coverage - Inspection



INITIAL PRODUCTION CHECK (IPC):

- Materials, components and the first few finished units are checked at the commencement of production against your specifications and type sample. The IPC thus permits timely corrections and improvements before the bulk of production is initiated; furthermore, our faxed interim production status report will keep you accurately informed.



DURING PRODUCTION CHECK (DUPRO):

- Is production on schedule and in conformity with your requirements? The DUPRO provides a professional answer to this question; SGS will check that the corrections and improvements suggested during the IPC were implemented, examine the existing production, advise the manufacturers of any further corrections or improvements to be made and provide you with a faxed interim product status report.

Service Coverage - Inspection

FINAL RANDOM INSPECTION (FRI):



- The FRI takes place after your merchandise has been fully produced, packed and is in all respects ready for shipment. Performed according to the international standard ABC-STD 105 E (ANSI/ASQC Z1.4-1993). The selected samples are then carefully checked against your specifications and type samples; this inspection involves a close examination covering such items as construction, workmanship, function, cosmetics, assortment, packing, marking, etc.



Factory Assessments:

- Such a survey can be directed towards the suppliers QA programme or his ability to deliver in the quantities and to the quality required by the client.

Delivery Monitoring

- As part of the 3-stage procedure (IPC/DUPRO/FRI) the execution of the order according to the delivery schedule may be monitored and the client advised if problems are foreseen.

Service Coverage - Inspection

- Electrical and Electronics



- Toys and Sundries



WHEN YOU NEED TO BE SURE

SGS

Service Coverage - Inspection

- Textile, Garments and Shoes



- Food Products



WHEN YOU NEED TO BE SURE

SGS

Why choose SGS



- Ensuring quality standards of your products and services to protect your customers
- Minimising your risks in business and trade
- Increasing safety for your staff in the production flow
- Optimising your processes
- Competitive advantages
- Tested safety



Why choose SGS

- Increased company transparency
- Responsibility for the future, e.g. environmental certificates
- Enhancement of customer satisfaction Excellent technical experts
- World wide network
- technical support and steady update on market needs
- SGS's strong relationship to industry as well as public and governmental institutions



Inspection of bathroom products

陶瓷卫浴制品的检验

Prepared by Tianjin Branch

WHEN YOU NEED TO BE SURE

SGS

Suitable sampling plan

抽样方案

Sampling plan: ANSI/ASQ Z1.4-2003 (MIL-STD-105E)

IPC (初期检验) - Level I

DUPRO (中期检验) - Level I

FRI (末期检验) - Level II AQL 2.5/4.0

Cartons selection: Square root of total cartons

抽箱数:总箱数的平方根

or subject to client's requirement

或按客户的要求

WHEN YOU NEED TO BE SURE



ANSI/ASQC Standard Z1.4-2003 Sampling Plan

Sample Size Code Letters

SGS SGS-CSTC
Add: 16F Century YuHui Mansion, No. 73 Fucheng Road, Beijing, China
Tel: (+86-10) 68456699 Fax: (+86-10) 68457979

ANSI / ASQ Z1.4-2003
Table I-Sample size code letters (See 9.2 and 9.3)

Lot or Batch Size			Special inspection levels				General inspection levels		
			S-1	S-2	S-3	S-4	I	II	III
2	to	8	A	A	A	A	A	A	B
9	to	15	A	A	A	A	A	B	C
16	to	25	A	A	B	B	B	C	D
26	to	50	A	B	B	C	C	D	E
51	to	90	B	B	C	C	C	E	F
91	to	150	B	B	C	D	D	F	G
151	to	280	B	C	D	E	E	G	H
281	to	500	B	C	D	E	F	H	J
501	to	1,200	C	C	E	F	G	J	K
1,201	to	3,200	C	D	E	G	H	K	L
3,201	to	10,000	C	D	F	G	J	L	M
10,001	to	35,000	C	D	F	H	K	M	N
35,001	to	150,000	D	E	G	J	L	N	P
150,001	to	500,000	D	E	G	J	M	P	Q
500,001	and over		D	E	H	K	N	Q	R

CIAT 2004 VERSION

WHEN YOU NEED TO BE SURE



ANSI/ASQC Standard Z1.4-2003 Sampling Plan

Sample Size Code Letters

Table II-A—Single sampling plans for normal inspection(Master table) (See 9.4 and 9.5)

Sample size code letter	Sample size	Acceptance Quality Limits,AQLs, in Percent Nonconforming Items and Nonconformities per 100 Items (Normal Inspection)																																				
		0.010	0.015	0.025	0.040	0.065	0.10	0.15	0.25	0.40	0.65	1.0	1.5	2.5	4.0	6.5	10	15	25	40	65	100	150	250	400	650	1000											
		Ac Re	Ac Re	Ac Re	Ac Re	Ac Re	Ac Re	Ac Re	Ac Re	Ac Re	Ac Re	Ac Re	Ac Re	Ac Re	Ac Re	Ac Re	Ac Re	Ac Re	Ac Re	Ac Re	Ac Re	Ac Re	Ac Re	Ac Re	Ac Re	Ac Re	Ac Re	Ac Re	Ac Re	Ac Re	Ac Re	Ac Re	Ac Re	Ac Re	Ac Re	Ac Re	Ac Re	
A	2																																					
B	3																																					
C	5																																					
D	8																																					
E	13																																					
F	20																																					
G	32																																					
H	50																																					
J	80																																					
K	125																																					
L	200																																					
M	315																																					
N	500																																					
P	800																																					
Q	1250																																					
R	2000																																					

↓ = Use the first sampling plan below the arrow. If sample size equals, or exceeds, lot or batch size, carry out 100 % inspection.
↑ = Use the first sampling plan above the arrow.
Ac = Acceptance number.
Re = Rejection number.

WHEN YOU NEED TO BE SURE

SGS

Quality Inspection Scope

质量检验范围

Physical appearance criteria 物理外观范围

- Non functional sharp point and sharp edge (May injure customer)
- Deformed, damaged, scratched, dirty mark, broken, chipped, cracked, scuff mark.....
- Wrong color or style or type

Workmanship criteria 做工范围

Packing assortment, marking criteria 包装及标识范围

- Packing method and condition
- Shipping mark and side mark
- Carton dimension and weight

Function check 功能检查

WHEN YOU NEED TO BE SURE

SGS

Defect Classification 缺陷分类

Critical 不接受缺陷:导致不安全及有危险隐患或会违反法规的缺陷.

This classification includes defects which would cause serious injury, that are

- unsafe,
- hazardous, or potential hazardous
- illegal, that is contravening mandatory regulations

Major 大缺陷:导致故障,降低用途及在外观上影响销售的缺陷.

This classification includes defects which cause:

- the product or package not to function as intended,
- likely reduce the usability or cause premature failure of the product,
- obvious affect the salability of the product, a customer would not buy the product if they saw the defect

WHEN YOU NEED TO BE SURE

SGS

Defect Classification 缺陷分类

Minor 小缺陷:不影响用途但超出质量标准的缺陷.

This classification includes defects which are minor and may or may not be noticeable to a consumer, are usually cosmetic in nature. It does not reduce the usability of the product, but is nevertheless a workmanship defect beyond the defined quality standard.
It reduces the product salability at full price.

WHEN YOU NEED TO BE SURE

SGS

Typical Defects of Glassware

典型疵点和缺陷



Scuff mark



crack on tank



color stain on tank lid

WHEN YOU NEED TO BE SURE

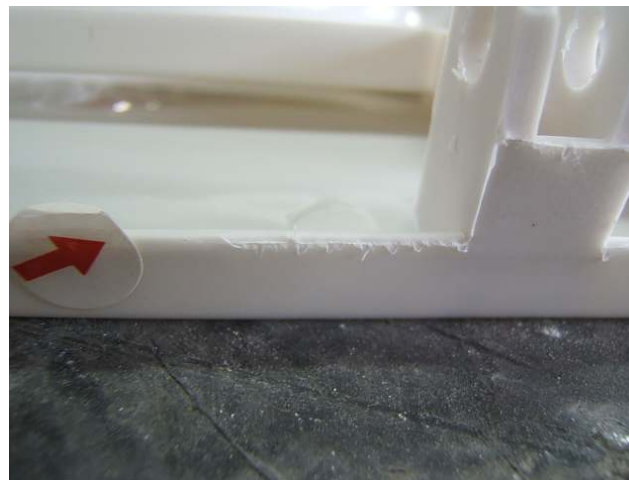
SGS

Typical Defects of Glassware

典型疵点和缺陷



crack mark on out water



poor finished



poor finished



poor glazing

WHEN YOU NEED TO BE SURE



Typical Defects of Glassware

典型疵点和缺陷



uneven surface



Uneven out hole



color stain



cracked on cover surface

WHEN YOU NEED TO BE SURE



Typical Defects of Glassware

典型疵点和缺陷



poor glazing



crack



lost glaze on top edge of tank



pin hole on seat-minor

WHEN YOU NEED TO BE SURE



Typical Defects of Glassware

典型疵点和缺陷



dirty stain (major)



Loose parts

WHEN YOU NEED TO BE SURE



Onsite testing 现场测试



gap



gap



gap between tank and lid



wobble for lid

WHEN YOU NEED TO BE SURE

SGS

Onsite testing 现场测试



ball test



granule test



paper test

WHEN YOU NEED TO BE SURE

SGS

Onsite testing 现场测试



ink flushing



trap seal



overflow test

WHEN YOU NEED TO BE SURE

SGS

Assembly testing 现场组装



assembled



WHEN YOU NEED TO BE SURE

SGS

Accessory & Packing check 包装检查



accessory



packing of ctn



WHEN YOU NEED TO BE SURE

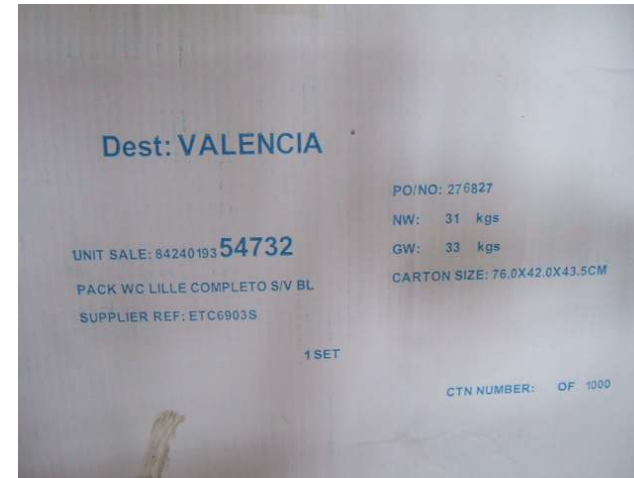
SGS

SGS

Packing check 包装检查



side mark



shipping mark



Poly bag of cover



date code

WHEN YOU NEED TO BE SURE

SGS

Packing check 包装检查



fumigation mark



packing for pallet

WHEN YOU NEED TO BE SURE

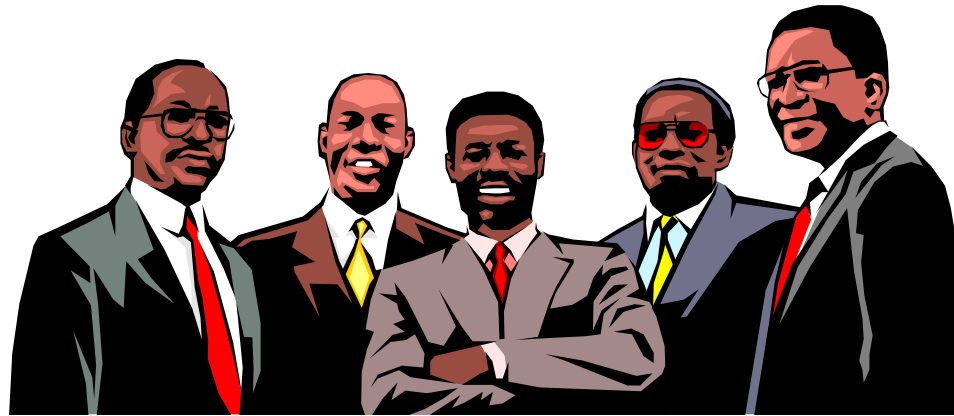


Key contact person 联络人

SGS Site	Adress	Contact/Email
Simon Hu	C, No. 41, Kaitai Science & Technology Building, The 5 th Avenue, TEDA, Tianjin, China PC300457	Phone: +86 (022) 2529 3878 Fax: +86 (022) 2529 3879 E-mail: simon.hu@sgs.com
Nick Wu	16F, Century YuHui Mansion, No. 73, Fucheng Road, Beijing, China	Phone: +86 (010) 68456699_642 Fax: +86 (010) 6845 5838 E-mail: nick.wu@sgs.com
Wenny Lee	C, No. 41, Kaitai Science & Technology Building, The 5 th Avenue, TEDA, Tianjin, China PC300457	Phone: +86 (022) 2529 3899_165 Fax: +86 (022) 2529 3879 E-mail: wenny.lee@sgs.com

WHEN YOU NEED TO BE SURE





Thank You

WHEN YOU NEED TO BE SURE

SGS