

Electromagnetic compatibility (EMC) —

**Part 3-2: Limits — Limits for harmonic
current emissions (equipment input
current ≤ 16 A per phase)**

The European Standard EN 61000-3-2:2006 has the status of a
British Standard

ICS 33.100.10

National foreword

This British Standard is the official English language version of EN 61000-3-2:2006. It is identical with IEC 61000-3-2:2005. It supersedes BS EN 61000-3-2:2001 which is withdrawn.

The UK participation in its preparation was entrusted by Technical Committee GEL/210, EMC, to Subcommittee GEL/210/8, Low frequency standards, which has the responsibility to:

- aid enquirers to understand the text;
- present to the responsible international/European committee any enquiries on the interpretation, or proposals for change, and keep UK interests informed;
- monitor related international and European developments and promulgate them in the UK.

A list of organizations represented on this subcommittee can be obtained on request to its secretary.

Cross-references

The British Standards which implement international or European publications referred to in this document may be found in the *BSI Catalogue* under the section entitled “International Standards Correspondence Index”, or by using the “Search” facility of the *BSI Electronic Catalogue* or of British Standards Online.

This publication does not purport to include all the necessary provisions of a contract. Users are responsible for its correct application.

Compliance with a British Standard does not of itself confer immunity from legal obligations.

Summary of pages

This document comprises a front cover, an inside front cover, the EN title page, pages 2 to 31 and a back cover.

The BSI copyright notice displayed in this document indicates when the document was last issued.

This British Standard was published under the authority of the Standards Policy and Strategy Committee on 31 May 2006

© BSI 2006

ISBN 0 580 48457 2

Amendments issued since publication

Amd. No.	Date	Comments

English version

**Electromagnetic compatibility (EMC)
Part 3-2: Limits -
Limits for harmonic current emissions
(equipment input current ≤ 16 A per phase)
(IEC 61000-3-2:2005)**

Compatibilité électromagnétique (CEM)
Partie 3-2: Limites -
Limites pour les émissions
de courant harmonique (courant appelé
par les appareils ≤ 16 A par phase)
(CEI 61000-3-2:2005)

Elektromagnetische Verträglichkeit (EMV)
Teil 3-2: Grenzwerte -
Grenzwerte für Oberschwingungsströme
(Geräte-Eingangsstrom ≤ 16 A je Leiter)
(IEC 61000-3-2:2005)

This European Standard was approved by CENELEC on 2006-02-01. CENELEC members are bound to comply with the CEN/CENELEC Internal Regulations which stipulate the conditions for giving this European Standard the status of a national standard without any alteration.

Up-to-date lists and bibliographical references concerning such national standards may be obtained on application to the Central Secretariat or to any CENELEC member.

This European Standard exists in three official versions (English, French, German). A version in any other language made by translation under the responsibility of a CENELEC member into its own language and notified to the Central Secretariat has the same status as the official versions.

CENELEC members are the national electrotechnical committees of Austria, Belgium, Cyprus, the Czech Republic, Denmark, Estonia, Finland, France, Germany, Greece, Hungary, Iceland, Ireland, Italy, Latvia, Lithuania, Luxembourg, Malta, the Netherlands, Norway, Poland, Portugal, Romania, Slovakia, Slovenia, Spain, Sweden, Switzerland and the United Kingdom.

CENELEC

European Committee for Electrotechnical Standardization
Comité Européen de Normalisation Electrotechnique
Europäisches Komitee für Elektrotechnische Normung

Central Secretariat: rue de Stassart 35, B - 1050 Brussels

Foreword

The text of document 77A/503/FDIS, future edition 3 of IEC 61000-3-2, prepared by SC 77A, Low frequency phenomena, of IEC TC 77, Electromagnetic compatibility, was submitted to the IEC-CENELEC parallel vote and was approved by CENELEC as EN 61000-3-2 on 2006-02-01.

This European Standard supersedes EN 61000-3-2:2000 + A2:2005.

The following dates were fixed:

- latest date by which the EN has to be implemented
at national level by publication of an identical
national standard or by endorsement (dop) 2006-11-01
- latest date by which the national standards conflicting
with the EN have to be withdrawn (dow) 2009-02-01

This European Standard has been prepared under a mandate given to CENELEC by the European Commission and the European Free Trade Association and covers essential requirements of EC Directives 89/336/EEC and 1999/5/EC. See Annex ZZ.

Annexes ZA and ZZ have been added by CENELEC.

Endorsement notice

The text of the International Standard IEC 61000-3-2:2005 was approved by CENELEC as a European Standard without any modification.

CONTENTS

INTRODUCTION	5
1 Scope	6
2 Normative references	6
3 Definitions	7
4 General	10
5 Classification of equipment	10
6 General requirements	11
6.1 Control methods	11
6.2 Harmonic current measurement	12
6.3 Equipment in a rack or case	14
7 Harmonic current limits	14
7.1 Limits for Class A equipment	16
7.2 Limits for Class B equipment	16
7.3 Limits for Class C equipment	16
7.4 Limits for Class D equipment	16
Annex A (normative) Measurement circuit and supply source	19
A.1 Test circuit	19
A.2 Supply source	19
Annex B (normative) Requirements for measurement equipment	22
Annex C (normative) Type test conditions	23
C.1 General	23
C.2 Test conditions for television (TV) receivers	23
C.3 Test conditions for audio amplifiers	24
C.4 Test conditions for video-cassette recorders	24
C.5 Test conditions for lighting equipment	24
C.6 Test conditions for independent and built-in incandescent lamp dimmers	25
C.7 Test conditions for vacuum cleaners	25
C.8 Test conditions for washing machines	26
C.9 Test conditions for microwave ovens	26
C.10 Test conditions for information technology equipment (ITE)	26
C.11 Test conditions for induction hobs	26
C.12 Test conditions for air conditioners	27
C.13 Test conditions for kitchen machines as defined in IEC 60335-2-14	27
C.14 Test conditions for arc welding equipment which is not professional equipment	27
C.15 Test conditions for other equipment	28
Annex ZA (normative) Normative references to international publications with their corresponding European publications	29
Annex ZZ (informative) Coverage of Essential Requirements of EC Directives	31

Figure 1 – Flowchart for determining conformity	15
Figure A.1 – Measurement circuit for single-phase equipment	20
Figure A.2 – Measurement circuit for three-phase equipment	21
Table 1 – Limits for Class A equipment	17
Table 2 – Limits for Class C equipment	17
Table 3 – Limits for Class D equipment	17
Table 4 – Test observation period	18
Table C.1 – Conventional load for arc welding equipment tests	27

INTRODUCTION

IEC 61000 is published in separate parts, according to the following structure:

Part 1: General

General considerations (introduction, fundamental principles)

Definitions, terminology

Part 2: Environment

Description levels

Classification of the environment

Compatibility levels

Part 3: Limits

Emission limits

Immunity limits (in so far as they do not fall under the responsibility of the product committees)

Part 4: Testing and measurement techniques

Measurement techniques

Testing techniques

Part 5: Installation and mitigation guidelines

Installation guidelines

Mitigation methods and devices

Part 6: Generic standards

Part 9: Miscellaneous

Each part is further subdivided into sections which are to be published either as international standards, technical specifications, or as technical reports.

These standards and reports will be published in chronological order and numbered accordingly (for example, 61000-6-1).

This part is an international standard which gives emission limits for harmonic currents from equipment having an input current up to and including 16 A per phase.

This part is a Product Family Standard.

ELECTROMAGNETIC COMPATIBILITY (EMC) –**Part 3-2: Limits –
Limits for harmonic current emissions
(equipment input current ≤ 16 A per phase)****1 Scope**

This part of IEC 61000 deals with the limitation of harmonic currents injected into the public supply system.

It specifies limits of harmonic components of the input current which may be produced by equipment tested under specified conditions.

Harmonic components are measured according to Annexes A and B.

This part of IEC 61000 is applicable to electrical and electronic equipment having an input current up to and including 16 A per phase, and intended to be connected to public low-voltage distribution systems.

Arc welding equipment which is not professional equipment, with input current up to and including 16 A per phase, is included in this standard.

Arc welding equipment intended for professional use, as specified in IEC 60974-1, is excluded from this standard and may be subject to installation restrictions as indicated in IEC 61000-3-4 or IEC 61000-3-12.

The tests according to this standard are type tests. Test conditions for particular equipment are given in Annex C.

For systems with nominal voltages less than 220 V (line-to-neutral), the limits have not yet been considered.

NOTE The words apparatus, appliance, device and equipment are used throughout this standard. They have the same meaning for the purpose of this standard.

2 Normative references

The following referenced documents are indispensable for the application of this document. For dated references, only the edition cited applies. For undated references, the latest edition of the referenced document (including any amendments) applies.

IEC 60050(131), *International Electrotechnical Vocabulary (IEV) – Chapter 131: Electric and magnetic circuits*

IEC 60050(161), *International Electrotechnical Vocabulary (IEV) – Chapter 161: Electro-magnetic compatibility*

IEC 60065, *Audio, video and similar electronic apparatus – Safety requirements*

IEC 60107-1, *Methods of measurement on receivers for television broadcast transmissions – Part 1: General considerations – Measurements at radio and video frequencies*

IEC 60155, *Glow-starters for fluorescent lamps*

IEC 60268-3, *Sound system equipment – Part 3: Amplifiers*

IEC 60335-2-2, *Household and similar electrical appliances - Safety - Part 2-2: Particular requirements for vacuum cleaners and water-suction cleaning appliances*

IEC 60335-2-14, *Household and similar electrical appliances - Safety - Part 2-14: Particular requirements for kitchen machines*

IEC 60974-1, *Arc welding equipment – Part 1: Welding power sources*

IEC 61000-2-2, *Electromagnetic compatibility (EMC) – Part 2: Environment – Section 2: Compatibility levels for low-frequency conducted disturbances and signalling in public low-voltage power supply systems*

IEC/TS 61000-3-4, *Electromagnetic compatibility (EMC) – Part 3-4: Limits – Limitation of emission of harmonic currents in low-voltage power supply systems for equipment with rated current greater than 16 A*

IEC 61000-3-12, *Electromagnetic compatibility (EMC) – Part 3-12: Limits – Limits for harmonic currents produced by equipment connected to public low-voltage systems with input current >16 A and ≤75 A per phase*

IEC 61000-4-7, *Electromagnetic compatibility (EMC) – Part 4-7: Testing and measurement techniques – General guide on harmonics and interharmonics measurements and instrumentation, for power supply systems and equipment connected thereto*

Recommendation ITU-R BT.471-1, *Nomenclature and description of colour bar signals*

3 Definitions

For the purpose of this part of IEC 61000, the following definitions apply, as well as the definitions of IEC 60050(161).

3.1

portable tool

an electrical tool which is hand-held during normal operation and used for a short time (a few minutes) only

3.2

lamp

a source for producing light

3.3

self-ballasted lamp

a unit which cannot be dismantled without being permanently damaged, provided with a lamp cap and incorporating a light source and any additional element necessary for starting and stable operation of the light source

3.4

luminaire

an apparatus (other than a lamp) which distributes, filters or transforms the light transmitted from one or more lamps and which includes all the parts necessary for supporting, fixing and protecting the lamps, and, where necessary, circuit auxiliaries, together with the means for connecting them to the supply

3.5**semi-luminaire**

a unit similar to a self-ballasted lamp but designed to utilize a replaceable light source and/or starting device

3.6**ballast**

a device connected between the supply and one or more discharge lamps which serves mainly to limit the current of the lamp(s) to the required value. It may include means for transforming the supply voltage and/or frequency, correcting the power factor and, either alone or in combination with a starting device, provide the necessary conditions for starting the lamp(s)

3.7**step-down converter for lighting equipment**

a unit inserted between the supply and one or more tungsten halogen or other filament lamps which serves to supply the lamp(s) with its (their) rated voltage, generally at high frequency. The unit may consist of one or more separate components. It may include means for dimming, correcting the power factor and suppressing radio interference

3.8**lighting unit**

lighting equipment consisting of one self-ballasted lamp or the combination of one control device (ballast, semi-luminaire, transformer or the like) operating one or more lamps

3.9**reference lamp**

a lamp selected for testing ballasts which, when associated with a reference ballast, has electrical characteristics that are close to the objective values given in the relevant lamp specification

3.10**reference ballast**

a special inductive-type ballast designed for the purpose of providing comparison standards for use in testing ballasts and for the selection of reference lamps. It is essentially characterized by a stable voltage-to-current ratio, which is relatively uninfluenced by variations in current, temperature, and the magnetic surroundings

3.11**input current**

current directly supplied to an equipment or a part of equipment by the a.c. distribution system

3.12**circuit power factor**

the circuit power factor is the ratio of the measured active input power to the product of the supply voltage (r.m.s.) and the supply current (r.m.s.)

3.13**active power**

the mean value, taken over one period, of the instantaneous power

[IEV 131-03-18]

NOTE The active input power is the active power measured at the input supply terminals of the equipment under test.

3.14

balanced three-phase equipment

equipment having rated line current modules which differ by no more than 20 %

3.15

professional equipment

equipment for use in trades, professions, or industries and which is not intended for sale to the general public. The designation shall be specified by the manufacturer

3.16

total harmonic current

total r.m.s. value of the harmonic current components of orders 2 to 40

$$\text{total harmonic current} = \sqrt{\sum_{n=2}^{40} I_n^2}$$

3.17

built-in dimmer

dimmer, including the user control, which is entirely contained within the enclosure of a luminaire

3.18

partial odd harmonic current

total r.m.s. value of the odd harmonic current components of orders 21 to 39

$$\text{partial odd harmonic current} = \sqrt{\sum_{n=21,23}^{39} I_n^2}$$

3.19

lighting equipment

equipment with a primary function of generating and/or regulating and/or distributing optical radiation by means of incandescent lamps, discharge lamps or LED's

Included are:

- lamps and luminaires;
- the lighting part of multi-function equipment where one of the primary functions of this is illumination;
- independent ballasts for discharge lamps and independent incandescent lamp transformers;
- ultraviolet (UV) and infrared (IR) radiation equipment;
- illuminated advertising signs;
- dimmers for lamps other than incandescent.

Excluded are:

- lighting devices built in equipment with another primary purpose such as photocopiers, overhead projectors and slide projectors or employed for scale illuminating or indication purposes;
- dimmers for incandescent lamps.

3.20

stand-by mode

sleep-mode

non-operational, low power consumption mode (usually indicated in some way on the equipment) that can persist for an indefinite time

4 General

The objective of this standard is to set limits for harmonic emissions of equipment within its scope, so that, with due allowance for the emissions from other equipment, compliance with the limits ensures that harmonic disturbance levels do not exceed the compatibility levels defined in IEC 61000-2-2.

Professional equipment that does not comply with the requirements of this standard may be permitted to be connected to certain types of low voltage supplies, if the instruction manual contains a requirement to ask the supply utility for permission to connect. Recommendations concerning this aspect are contained in IEC/TS 61000-3-4 or IEC 61000-3-12.

5 Classification of equipment

For the purpose of harmonic current limitation, equipment is classified as follows:

Class A:

- balanced three-phase equipment;
- household appliances, excluding equipment identified as class D;
- tools, excluding portable tools;
- dimmers for incandescent lamps;
- audio equipment.

Equipment not specified in one of the three other classes shall be considered as class A equipment.

NOTE 1 Equipment that can be shown to have a significant effect on the supply system may be reclassified in a future edition of the standard. Factors to be taken into account include:

- number of pieces of equipment in use;
- duration of use;
- simultaneity of use;
- power consumption;
- harmonic spectrum, including phase.

Class B:

- portable tools;
- arc welding equipment which is not professional equipment.

Class C:

- lighting equipment.

Class D:

Equipment having a specified power according to 6.2.2 less than or equal to 600 W, of the following types:

- personal computers and personal computer monitors;
- television receivers.

NOTE 2 Class D limits are reserved for equipment that, by virtue of the factors listed in note 1, can be shown to have a pronounced effect on the public electricity supply system.

6 General requirements

The following restrictions apply even to equipment to which no harmonic current limits apply as defined in Clause 7.

The requirements and limits specified in this clause are applicable to the power input terminals of equipment intended to be connected to 220/380 V, 230/400 V and 240/415 V systems operating at 50 Hz or 60 Hz. Requirements and limits for other cases are not yet considered.

6.1 Control methods

Asymmetrical controls according to IEC 161-07-12 and half wave rectification directly on the mains supply may only be used in the following circumstances:

- a) where they are the only practical solution permitting the detection of unsafe conditions, or
- b) where the controlled active input power is less or equal to 100 W, or
- c) where the controlled appliance is a portable equipment fitted with a two-core flexible cord and is intended for use for a short period of time, i.e. for a few minutes only.

If one of these three conditions is fulfilled, half wave rectification may be used for any purpose, whereas asymmetrical controls may only be used for the control of motors.

NOTE Such equipment includes, but is not limited to, hair dryers, electrical kitchen appliances and portable tools.

Symmetrical control methods which are prone to produce harmonics of low order ($n \leq 40$) in the input current may be used for the control of the power supplied to heating elements provided that the full sine-wave input power is less than or equal to 200 W, or that the limits of Table 3 are not exceeded.

Such symmetrical control methods are also allowed for professional equipment provided that either

- a) one of the above conditions are fulfilled, or
- b) the relevant limits are not exceeded when tested at the supply input terminals and in addition both the following conditions are fulfilled:
 - 1) it is necessary to control precisely the temperature of a heater whose thermal time constant is less than 2 s, and
 - 2) there is no other technique economically available.

Professional equipment whose primary purpose, considered as a whole, is not for heating, shall be tested against the relevant limits.

NOTE 1 An example of a product whose primary purpose is not heating is a photocopier, whereas a cooker is considered to have heating as its primary purpose.

Domestic equipment with symmetrical control used for a short time (for example hair dryers) shall be tested under Class A.

Even though asymmetrical controls and half-wave rectification are permitted under the conditions given above, the equipment shall still comply with the harmonic requirements of this standard.

NOTE 2 The use of asymmetrical controls and half-wave rectification is allowed in the above circumstances; however, in case of fault, the d.c. component of the supplied current may disturb certain types of protection devices. In the same way, this may also happen with the use of symmetrical controls.

6.2 Harmonic current measurement

6.2.1 Test configuration

Specific test conditions for the measurement of harmonic currents associated with some types of equipment are given in Annex C.

For equipment not mentioned in Annex C, emission tests shall be conducted with the user's operation controls or automatic programs set to the mode expected to produce the maximum total harmonic current (THC) under normal operating conditions. This defines the equipment set-up during emission tests and not a requirement to measure THC or to conduct searches for worst-case emissions.

The harmonic current limits specified in Clause 7 apply to line currents and not to currents in the neutral conductor. Nevertheless, for single-phase equipment, it is permissible to measure the currents in the neutral conductor instead of the currents in the line.

The equipment is tested as presented by, and in accordance with information provided by, the manufacturer. Preliminary operation of motor drives by the manufacturer may be needed before the test are undertaken to ensure that results correspond with normal use.

6.2.2 Measurement procedure

The test shall be conducted according to the general requirements given in 6.2.3. The test duration shall be as defined in 6.2.4.

The measurement of harmonic currents shall be performed as follows:

- for each harmonic order, measure the 1,5 s smoothed r.m.s. harmonic current in each DFT time window as defined in Annex B;
- calculate the arithmetic average of the measured values from the DFT time windows, over the entire observation period as defined in 6.2.4.

The value of the input power to be used for the calculation of limits shall be determined as follows:

- measure the 1,5 s smoothed active input power in each DFT time window;
- determine the maximum of the measured values of power from the DFT time windows over the entire duration of the test.

NOTE The active input power supplied to the smoothing section of the measuring instrument as defined in Annex B is the active input power in each DFT time window.

The harmonic currents and the active input power shall be measured under the same test conditions but need not be measured simultaneously.

The value of the power, measured as defined in this clause, shall be specified by the manufacturer and documented in the test report. This value shall be used for establishing limits during emissions tests when limits are specified in terms of power. In order not to specify a power at which limits change abruptly, thus giving rise to doubt as to which limits apply, the manufacturer may specify any value which is within $\pm 10\%$ of the actual measured value.

The value of the power found by measurement during emission tests other than the original manufacturer's conformity assessment test, measured according to the terms of this clause, shall not be less than 90 % nor greater than 110 % of the value for power specified by the manufacturer in the test report (see 6.2.3.4). In the event that the measured value is outside of this tolerance band around the specified value, the measured power shall be used to establish the limits.

For class C equipment, the fundamental current and power factor, specified by the manufacturer, shall be used for the calculation of limits (see 3.12). The fundamental component of the current and the power factor are measured and specified by the manufacturer in the same way as the power is measured and specified for the calculation of class D limits. The value used for the power factor shall be obtained from the same DFT measurement window as the value for the fundamental component of current.

6.2.3 General requirements

6.2.3.1 Repeatability

The repeatability of the measurements shall be better than ± 5 %, when the following conditions are met:

- the same equipment under test (EUT) (not another of the same type, however similar it may be);
- identical test conditions;
- the same test system;
- identical climatic conditions, if relevant.

6.2.3.2 Starting and stopping

When a piece of equipment is brought into operation or is taken out of operation, manually or automatically, harmonic currents and power are not taken into account for the first 10 s following the switching event.

The equipment under test shall not be in stand-by mode (see 3.20) for more than 10 % of any observation period.

6.2.3.3 Application of limits

The average values for the individual harmonic currents, taken over the entire test observation period shall be less than or equal to the applicable limits.

For each harmonic order, all 1,5 s smoothed r.m.s. harmonic current values, as defined in 6.2.2, shall be either:

- a) less than or equal to 150 % of the applicable limits, or
- b) less than or equal to 200 % of the applicable limits under the following conditions, which apply all together:
 - 1) the EUT belongs to Class A for harmonics;
 - 2) the excursion beyond 150 % of the applicable limits lasts less than 10 % of the test observation period or in total 10 min (within the test observation period), whichever is smaller, and
 - 3) the average value of the harmonic current, taken over the entire test observation period, is less than 90 % of the applicable limits.

Harmonic currents less than 0,6 % of the input current measured under the test conditions, or less than 5 mA, whichever is greater, are disregarded.

For the 21st and higher odd order harmonics, the average value obtained for each individual odd harmonic over the full observation period, calculated from the 1,5 s smoothed r.m.s. values according to 6.2.2, may exceed the applicable limits by 50 % provided that the following conditions are met:

- the measured partial odd harmonic current does not exceed the partial odd harmonic current which can be calculated from the applicable limits;
- all 1,5 s smoothed r.m.s. individual harmonic current values shall be less than or equal to 150 % of the applicable limits.

NOTE These exemptions (the use of the partial odd harmonic current for the average values and the 200 % short term limit for single 1,5 s smoothed values) are mutually exclusive and cannot be used together.

6.2.3.4 Test report

The test report may be based on information supplied by the manufacturer to a testing facility, or be a document recording details of the manufacturer's own tests. It shall include all relevant information for the test conditions, the test observation period, and, when applicable for establishing the limits, the active power or fundamental current and power factor.

6.2.4 Test observation period

Observation periods (T_{obs}) for four different types of equipment behaviour are considered and described in Table 4.

6.3 Equipment in a rack or case

Where individual self-contained items of equipment are installed in a rack or case, they are regarded as being individually connected to the mains supply. The rack or case need not be tested as a whole.

7 Harmonic current limits

The procedure for applying the limits and assessing the results is shown in Figure 1.

For the following categories of equipment, limits are not specified in this standard:

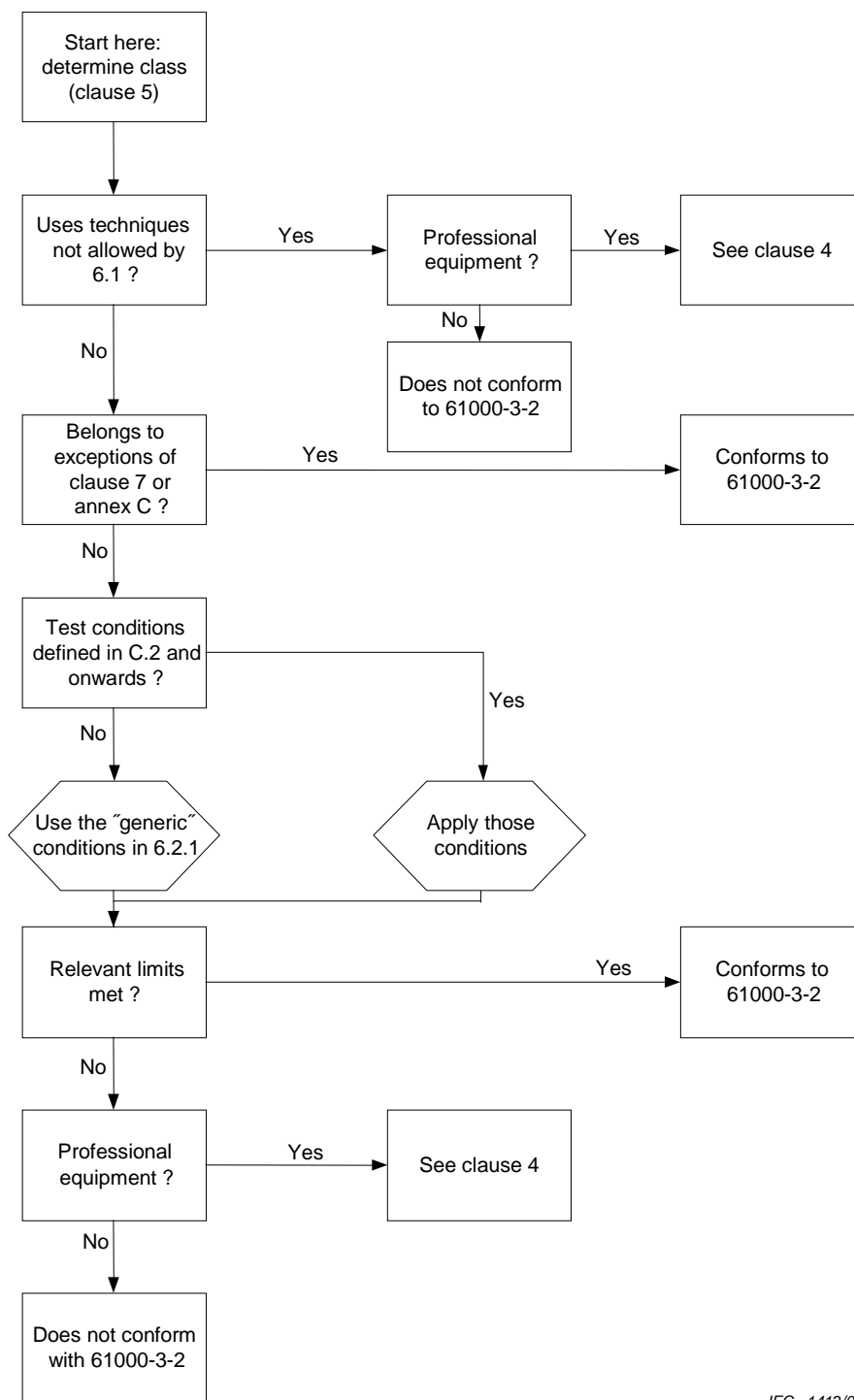
NOTE 1 Limits may be defined in a future amendment or revision of the standard.

- equipment with a rated power of 75 W or less, other than lighting equipment;

NOTE 2 This value may be reduced from 75 W to 50 W in the future, subject to approval by National Committees at that time.

- professional equipment with a total rated power greater than 1 kW;
- symmetrically controlled heating elements with a rated power less than or equal to 200 W;
- independent dimmers for incandescent lamps with a rated power less than or equal to 1 kW.

NOTE 3 See also C.5.3.



IEC 1412/01

Figure 1 – Flowchart for determining conformity

7.1 Limits for Class A equipment

For Class A equipment, the harmonics of the input current shall not exceed the values given in Table 1.

Audio amplifiers shall be tested according to Clause C.3. Dimmers for incandescent lamps shall be tested according to Clause C.6.

7.2 Limits for Class B equipment

For Class B equipment, the harmonics of the input current shall not exceed the values given in Table 1 multiplied by a factor of 1,5.

7.3 Limits for Class C equipment

a) Active input power $>25\text{ W}$

For lighting equipment having an active input power greater than 25 W, the harmonic currents shall not exceed the relative limits given in Table 2.

However, the limits given in Table 1 apply to incandescent lighting equipment that has built-in dimmers or consists of dimmers built in an enclosure.

For discharge lighting equipment that has built-in dimmers or consists of independent dimmers or dimmers built in an enclosure, the following conditions apply:

- the harmonic current values for the maximum load condition derived from the percentage limits given in Table 2 shall not be exceeded;
- in any dimming position, the harmonic current shall not exceed the value of current allowed in the maximum load condition;
- the equipment shall be tested according to the conditions given in C.5.

b) Active input power $\leq 25\text{ W}$

Discharge lighting equipment having an active input power smaller than or equal to 25 W shall comply with one of the following two sets of requirements:

- the harmonic currents shall not exceed the power-related limits of Table 3, column 2, or:
- the third harmonic current, expressed as a percentage of the fundamental current, shall not exceed 86 % and the fifth shall not exceed 61 %; moreover, the waveform of the input current shall be such that it begins to flow before or at 60° , has its last peak (if there are several peaks per half period) before or at 65° and does not stop flowing before 90° , where the zero crossing of the fundamental supply voltage is assumed to be at 0° .

If the discharge lighting equipment has a built-in dimming device, measurement is made only in the full load condition.

7.4 Limits for Class D equipment

For Class D equipment, the harmonic currents and the power shall be measured as defined in 6.2.2. The input currents at harmonic frequencies shall not exceed the values that can be derived from Table 3 according to the requirements specified in 6.2.3 and 6.2.4.

Table 1 – Limits for Class A equipment

Harmonic order n	Maximum permissible harmonic current A
Odd harmonics	
3	2,30
5	1,14
7	0,77
9	0,40
11	0,33
13	0,21
$15 \leq n \leq 39$	$0,15 \frac{15}{n}$
Even harmonics	
2	1,08
4	0,43
6	0,30
$8 \leq n \leq 40$	$0,23 \frac{8}{n}$

Table 2 – Limits for Class C equipment

Harmonic order n	Maximum permissible harmonic current expressed as a percentage of the input current at the fundamental frequency %
2	2
3	$30 \cdot \lambda^*$
5	10
7	7
9	5
$11 \leq n \leq 39$ (odd harmonics only)	3
* λ is the circuit power factor	

Table 3 – Limits for Class D equipment

Harmonic order n	Maximum permissible harmonic current per watt mA/W	Maximum permissible harmonic current A
3	3,4	2,30
5	1,9	1,14
7	1,0	0,77
9	0,5	0,40
11	0,35	0,33
$13 \leq n \leq 39$ (odd harmonics only)	$\frac{3,85}{n}$	See Table 1

Table 4 – Test observation period

Type of equipment behaviour	Observation period
Quasi-stationary	T_{obs} of sufficient duration to meet the requirements for repeatability in 6.2.3.1
Short cyclic ($T_{\text{cycle}} \leq 2,5 \text{ min}$)	$T_{\text{obs}} \geq 10$ cycles (reference method) or T_{obs} of sufficient duration or synchronisation to meet the requirements for repeatability in 6.2.3.1 ^a
Random	T_{obs} of sufficient duration to meet the requirements for repeatability in 6.2.3.1
Long cyclic ($T_{\text{cycle}} > 2,5 \text{ min}$)	Full equipment program cycle (reference method) or a representative 2,5 min period considered by the manufacturer as the operating period with the highest THC
^a By 'synchronization' is meant that the total observation period is sufficiently close to including an exact integral number of equipment cycles such that the requirements for repeatability in 6.2.3.1 are met.	

Annex A (normative)

Measurement circuit and supply source

A.1 Test circuit

The measured harmonic values shall be compared with the limits given in Clause 7. The harmonic currents of the equipment under test (EUT) shall be measured in accordance with the circuits given in the following figures:

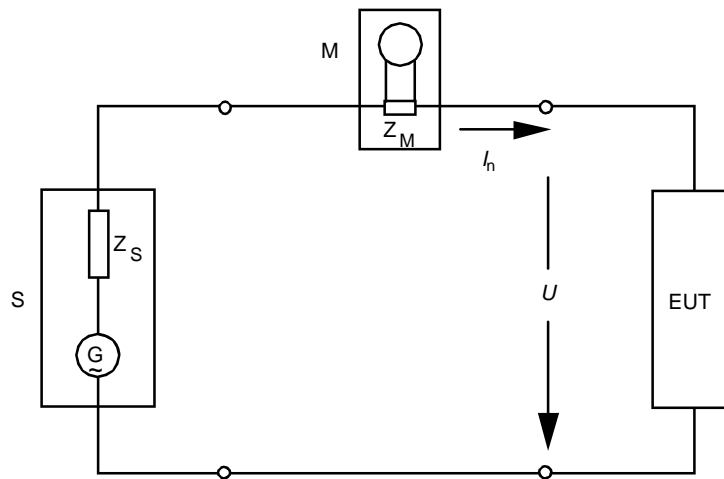
- Figure A.1 for single-phase equipment;
- Figure A.2 for three-phase equipment.

Measurement equipment complying with Annex B shall be used. Test conditions for the EUT are given in Annex C.

A.2 Supply source

While the measurements are being made, the test voltage (U) at the terminals of the equipment under test, when operated according to Annex C, shall meet the following requirements.

- a) The test voltage (U) shall be the rated voltage of the equipment. In the case of a voltage range, the test voltage shall be 230 V or 400 V for single-phase or three-phase supplies respectively. The test voltage shall be maintained within $\pm 2,0$ % and the frequency within $\pm 0,5$ % of the nominal value.
- b) In the case of a three-phase supply, the angle between the fundamental voltage on each pair of phases of a three-phase source shall be $120^\circ \pm 1,5^\circ$.
- c) The harmonic ratios of the test voltage (U) shall not exceed the following values with the EUT connected as in normal operation:
 - 0,9 % for harmonic of order 3;
 - 0,4 % for harmonic of order 5;
 - 0,3 % for harmonic of order 7;
 - 0,2 % for harmonic of order 9;
 - 0,2 % for even harmonics of order from 2 to 10;
 - 0,1 % for harmonics of order from 11 to 40.
- d) The peak value of the test voltage shall be within 1,40 and 1,42 times its r.m.s. value and shall be reached within 87° to 93° after the zero crossing. This requirement does not apply when Class A or B equipment is tested.



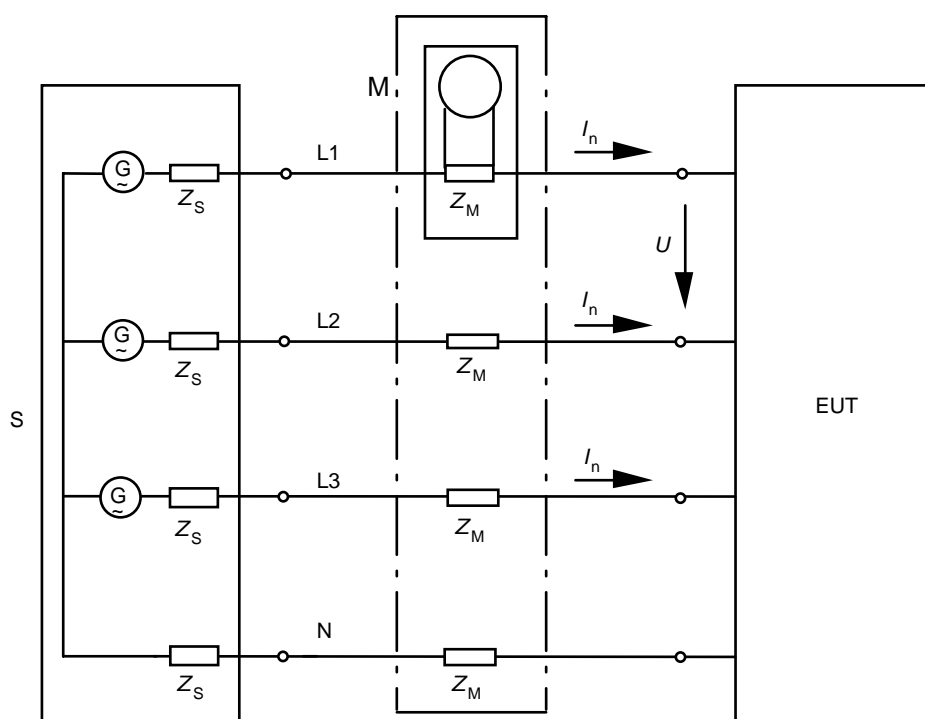
IEC 1778/2000

S	power supply source	Z_M	input impedance of measurement equipment
M	measurement equipment	Z_S	internal impedance of the supply source
EUT	equipment under test	I_n	harmonic component of order n of the line current
U	test voltage	G	open-loop voltage of the supply source

NOTE 1 Z_S and Z_M are not specified, but have to be sufficiently low to suit the test requirements. For the value of Z_M , see Annex B.

NOTE 2 In some special cases, particular care may be necessary to avoid resonance between the internal inductance of the source and the capacitances of the equipment under test.

Figure A.1 – Measurement circuit for single-phase equipment



IEC 1779/2000

- S power supply source
- M measurement equipment
- EUT equipment under test
- G open-loop voltage of the supply source
- Z_M input impedance of the measurement equipment
- Z_s internal impedance of the supply source
- I_n harmonic component of order of the line current
- U test voltage (shown as an example between phases L1 and L2)

NOTE 1 Z_M and Z_s are not specified, but have to be sufficiently low to suit the test requirements. For the value of Z_M, see Annex B.

NOTE 2 In some special cases, particular care may be necessary to avoid resonance between the internal inductance of the source and the capacitances of the equipment under test.

Figure A.2 – Measurement circuit for three-phase equipment

Annex B
(normative)

Requirements for measurement equipment

The requirements for measurement equipment are defined in IEC 61000-4-7.

NOTE IEC 61000-4-7 does not explicitly define "1,5 s smoothed active input power". For the avoidance of doubt, it is smoothed by a 1,5 s first-order low-pass filter.

Annex C (normative)

Type test conditions

C.1 General

The test conditions for the measurement of harmonic currents associated with some types of equipment are given in the following clauses.

C.2 Test conditions for television (TV) receivers

C.2.1 General conditions

Measurements shall include the loading of any auxiliary circuits included in the receiver, but exclude the loading of any peripheral equipment powered from the receiver.

C.2.2 Conditions for measurement

A radio-frequency signal modulated in accordance with C.2.2.1 shall be supplied by a test generator, and the receiver shall be adjusted to display a picture with appropriate settings for brightness, contrast and sound level in accordance with C.2.2.2.

C.2.2.1 The TV receiver is fed by an r.f. TV input signal with a level of 65 dB(μ V) across 75 Ω and with the following test modulations.

a) Color television

Radio-frequency signal: a full TV signal with modulated picture chrominance and sound carrier:

- the sound modulation factor is 54 % at 1 000 Hz;
- the picture modulation content is a color bar test pattern according to Recommendation ITU-R BT.471-1:
 - 100 % reference white level bar;
 - 0 % reference black level bar;
 - 75 % amplitude (reference made to the white level); and
 - 100 % saturation.

b) Monochrome television

Radio-frequency signal: a full TV signal with modulated picture and sound carrier:

- sound modulation: see item a) above;
- the picture modulation is a monochrome test pattern with a black and white level according to item a) and an average overall picture content of 50 % of the reference white level.

C.2.2.2 The receiver shall be tuned according to IEC 60107-1.

The white reference level corresponds to 80 cd/m² and the black level to less than 2 cd/m².

The magenta bar corresponds to 30 cd/m².

The volume control is set in such a manner that one-eighth of rated output power is obtained, measured at the loudspeaker terminals, at a frequency of 1 000 Hz. In the case of stereophonic equipment, this output shall be present at both outputs.

NOTE For devices that operate on base-band signals, suitable video and audio input signals should be used, and the same settings made for brightness, contrast and volume controls.

C.3 Test conditions for audio amplifiers

Audio amplifiers which draw a supply current which varies by less than 15 % of the maximum current with input signals between no signal and rated source e.m.f. (as defined in IEC 60268-3) shall be tested with no input signal.

Other audio amplifiers shall be tested under the following conditions:

- rated supply voltage;
- normal position of user controls. In particular, any controls affecting the frequency response shall be set to give the widest flat response achievable;
- input signals and load conditions as given in 4.2.4 of IEC 60065.

C.4 Test conditions for video-cassette recorders

Measurements shall be made in the playback mode with the standard tape speed.

C.5 Test conditions for lighting equipment

C.5.1 General conditions

Measurements shall be made in a draught-free atmosphere and at an ambient temperature within the range from 20 °C to 27 °C. During measurement the temperature shall not vary by more than 1 K.

C.5.2 Lamps

Lamps shall be aged for at least 100 h at rated voltage. They shall be operated for at least 15 min before a series of measurements is made. During ageing and measurement, lamps shall be installed as in normal use.

NOTE Some lamp types may require a stabilizing period exceeding 15 min. Information given in the relevant lamp specification must be observed.

C.5.3 Luminaires

The luminaire is measured as manufactured. It shall be tested with reference lamps, or with lamps having electrical characteristics close to their nominal values. In case of doubt measurements are made with reference lamps. When the luminaire incorporates more than one lamp, all lamps are connected and operated during the test. When the luminaire is assigned for use with more than one type of lamp, measurements shall be made with all the types and the luminaire shall comply each time. In the case where the luminaire is equipped with a glow starter, a starter in accordance with IEC 60155, shall be used.

Incandescent lamp luminaires which do not incorporate an electronic transformer or a dimming device are deemed to fulfil the harmonic current requirements and need not be tested.

If separate tests with reference lamps have proved that ballasts for fluorescent or other discharge lamps or step-down converters for tungsten halogen or other filament lamps, comply with the requirements, the luminaire is deemed to comply with these requirements and need not be checked. Where these components have not been approved separately, or do not comply, the luminaire itself shall be tested and shall comply.

If a luminaire has a built-in dimming device, the harmonic currents shall be measured at the maximum load of the lamps as specified by the manufacturer. The setting of the dimming device is varied in five equidistant steps between the minimum and the maximum power in order to obtain comprehensive results.

C.5.4 Ballasts and step-down converters

Ballast for fluorescent or other discharge lamps or step-down converters for tungsten halogen or other filament lamps shall be tested with reference lamps, or with lamps having electrical characteristics close to their nominal values. In case of doubt, measurements are made with reference lamps.

In the case where a ballast can be used, with or without a series capacitor, or where a ballast or step-down converter is designed for several types of lamps, the manufacturer shall indicate in his catalogue for which type of circuit and lamps the ballast fulfils the harmonic requirements, and the ballast shall be tested accordingly.

C.6 Test conditions for independent and built-in incandescent lamp dimmers

The dimmer is tested with incandescent lamps having the maximum power allowed for the dimmer. The control is set to firing-angle of $90^\circ \pm 5^\circ$, or if controlled by steps, to that step closest to 90° .

C.7 Test conditions for vacuum cleaners

The air inlet of the vacuum cleaner is adjusted according to normal operation as defined in IEC 60335-2-2.

During the test observation period, which shall not be shorter than 6 min, vacuum cleaners with electronic control are tested in three modes of operation, each for an identical time interval, with the control adjusted:

- to maximum input power,
- to a firing-angle of $90^\circ \pm 5^\circ$, or, if controlled by steps, to that step closest to 90° ,
- and to minimum input power.

NOTE Alternatively, the equipment may be tested for 3 identical time intervals – each at least 2 min long – during which the vacuum cleaner is operated in the above three modes. These 3 time intervals need not be consecutive, but the application of limits is done as if the intervals were consecutive, without taking into account harmonic current values outside these 3 intervals.

If the vacuum cleaner includes a control to select a temporary high-power ('booster') mode of operation, which automatically returns to a lower power mode, this high-power mode is not considered for the calculation of the average values. This mode shall be tested only against the limits for single 1,5 s smoothed r.m.s. values (see 6.2.3.3).

C.8 Test conditions for washing machines

The washing machine shall be tested during a complete laundry program incorporating the normal wash-cycle filled with the rated load of double hemmed, pre-washed cotton cloths, size approximately 70 cm × 70 cm, dry weight from 140 g/m² to 175 g/m².

The temperature of the fill water shall be:

- 65 °C ± 5 °C for washing machines without heater elements;
- 15 °C ± 5 °C for other washing machines.

For washing machines with a programmer, the 60 °C cotton program without pre-wash shall be used.

If the washing machine does not incorporate a programmer, the water is heated to 90 °C ± 5 °C or lower if steady conditions are established, before starting the first wash period.

C.9 Test conditions for microwave ovens

The microwave oven is tested with 100 % nominal power. It is operated with a potable water load of initially 1 000 g ± 50 g in a cylindrical borosilicate glass vessel, having a maximum material thickness of 3 mm and an outside diameter of approximately 190 mm. The load is placed at the centre of the shelf.

C.10 Test conditions for information technology equipment (ITE)

ITE is tested with the equipment configured to its rated current. In this case, the equipment, if necessary, may be configured with its power supplies loaded with additional load (resistive) boards to simulate rated current conditions.

For ITE systems designed for use with a manufacturer-supplied power distribution system, e.g. transformers, UPS, power conditioner, etc., compliance with the limits of this standard shall be met at the input to the power distribution system.

C.11 Test conditions for induction hobs

Induction hobs are operated with an enamelled steel pan which contains approximately half its capacity of water at room temperature, and positioned at the centre of each cooking zone, in turn. Thermal controls are adjusted to their highest setting.

The diameter of the base of the pan is to be at least the diameter of the cooking zone. The smallest pan complying with this requirement is used. The maximum concavity of the base of the pan is $3D/1\ 000$ where D is the diameter of the flat area of the base of the pan. The base of the pan is not to be convex.

The concavity is checked at room temperature using an empty pan.

C.12 Test conditions for air conditioners

If the input power of the air conditioner is controlled by an electronic device so that the revolution speed of the fan or compressor motor is changed in order to get the suitable air temperature, the harmonic currents are measured after the operation becomes steady-state under the following conditions:

- The temperature control shall be set to the lowest value in the cooling mode and to the highest value in the heating mode.
- The ambient temperature for testing shall be $30\text{ °C} \pm 2\text{ °C}$ in the cooling mode, and $15\text{ °C} \pm 2\text{ °C}$ in the heating mode. If in the heating mode the rated input power is reached at a higher temperature, the air conditioner shall be tested at this ambient temperature but no higher than 18 °C . The ambient temperature is defined as the temperature of the air inhaled from the indoor and from the outdoor unit of appliance.

If the heat is not exchanged to the ambient air but to another medium for example water, all settings and temperatures shall be chosen so that the appliance is operated with the rated input power.

If the air conditioner does not contain power electronic elements (e.g. diodes, dimmers, thyristors, etc.), it need not be tested against harmonic current limits.

C.13 Test conditions for kitchen machines as defined in IEC 60335-2-14

Kitchen machines as listed in the scope of IEC 60335-2-14 are deemed to conform to the harmonic current limits of this standard without further testing

C.14 Test conditions for arc welding equipment which is not professional equipment

The arc welding power source is connected to a conventional load, which is adjusted in accordance with Table C1. The equipment is tested at the load current given by the maximum size of the rated electrode as specified by the manufacturer.

Table C.1 – Conventional load for arc welding equipment tests

Rated electrode diameter mm	Load current* A	Load voltage V
1,6	40	19,6
2	55	20,2
2,5	80	21,2
3,15	115	22,6
4	160	24,4
* Interpolation is allowed.		

C.15 Test conditions for other equipment

Test conditions for other equipment will be given as required.

Annex ZA (normative)

Normative references to international publications with their corresponding European publications

The following referenced documents are indispensable for the application of this document. For dated references, only the edition cited applies. For undated references, the latest edition of the referenced document (including any amendments) applies.

NOTE Where an international publication has been modified by common modifications, indicated by (mod), the relevant EN/HD applies.

<u>Publication</u>	<u>Year</u>	<u>Title</u>	<u>EN/HD</u>	<u>Year</u>
IEC 60050-131	- ¹⁾	International Electrotechnical Vocabulary (IEV) Chapter 131: Electric and magnetic circuits	-	-
IEC 60050-161	- ¹⁾	Chapter 161: Electromagnetic compatibility	-	-
IEC 60065 (mod)	- ¹⁾	Audio, video and similar electronic apparatus - Safety requirements	EN 60065 + corr. March	2002 ²⁾ 2006
IEC 60107-1	- ¹⁾	Methods of measurement on receivers for television broadcast transmissions Part 1: General considerations - Measurements at radio and video frequencies	EN 60107-1	1997 ²⁾
IEC 60155	- ¹⁾	Glow-starters for fluorescent lamps	EN 60155	1995 ²⁾
IEC 60268-3	- ¹⁾	Sound system equipment Part 3: Amplifiers	EN 60268-3 + corr. January	2000 ²⁾ 2002
IEC 60335-2-2 (mod)	- ¹⁾	Household and similar electrical appliances - Safety Part 2-2: Particular requirements for vacuum cleaners and water-suction cleaning appliances	EN 60335-2-2	2003 ²⁾
IEC 60335-2-14 (mod)	- ¹⁾	Part 2-14: Particular requirements for kitchen machines	EN 60335-2-14	2003 ²⁾
IEC 60974-1	- ¹⁾	Arc welding equipment Part 1: Welding power sources	EN 60974-1	2005 ²⁾
IEC 61000-2-2	- ¹⁾	Electromagnetic compatibility (EMC) Part 2: Environment Section 2: Compatibility levels for low-frequency conducted disturbances and signalling in public low-voltage power supply systems	EN 61000-2-2	2002 ²⁾

¹⁾ Undated reference.

²⁾ Valid edition at date of issue.

<u>Publication</u>	<u>Year</u>	<u>Title</u>	<u>EN/HD</u>	<u>Year</u>
IEC/TS 61000-3-4	- ¹⁾	Part 3-4: Limits - Limitation of emission of harmonic currents in low-voltage power supply systems for equipment with rated current greater than 16 A	-	-
IEC 61000-3-12	- ¹⁾	Part 3-12: Limits - Limits for harmonic currents produced by equipment connected to public low-voltage systems with input current > 16 A and \leq 75 A per phase	EN 61000-3-12	2005 ²⁾
IEC 61000-4-7	- ¹⁾	Part 4-7: Testing and measurement techniques - General guide on harmonics and interharmonics measurements and instrumentation, for power supply systems and equipment connected thereto	EN 61000-4-7	2002 ²⁾
ITU-R Recommendation BT.471-1	- ¹⁾	Nomenclature and description of colour bar signals	-	-

Annex ZZ
(informative)

Coverage of Essential Requirements of EC Directives

This European Standard has been prepared under a mandate given to CENELEC by the European Commission and the European Free Trade Association and within its scope the standard covers essential requirements as given in Article 4(a) of the EC Directive 89/336/EEC and essential requirements of Article 3.1(b) (emission only) of the EC Directive 1999/5/EC.

Compliance with this standard provides one means of conformity with the specified essential requirements of the Directives concerned.

WARNING: Other requirements and other EC Directives may be applicable to the products falling within the scope of this standard.

BSI — British Standards Institution

BSI is the independent national body responsible for preparing British Standards. It presents the UK view on standards in Europe and at the international level. It is incorporated by Royal Charter.

Revisions

British Standards are updated by amendment or revision. Users of British Standards should make sure that they possess the latest amendments or editions.

It is the constant aim of BSI to improve the quality of our products and services. We would be grateful if anyone finding an inaccuracy or ambiguity while using this British Standard would inform the Secretary of the technical committee responsible, the identity of which can be found on the inside front cover.
Tel: +44 (0)20 8996 9000. Fax: +44 (0)20 8996 7400.

BSI offers members an individual updating service called PLUS which ensures that subscribers automatically receive the latest editions of standards.

Buying standards

Orders for all BSI, international and foreign standards publications should be addressed to Customer Services. Tel: +44 (0)20 8996 9001.
Fax: +44 (0)20 8996 7001. Email: orders@bsi-global.com. Standards are also available from the BSI website at <http://www.bsi-global.com>.

In response to orders for international standards, it is BSI policy to supply the BSI implementation of those that have been published as British Standards, unless otherwise requested.

Information on standards

BSI provides a wide range of information on national, European and international standards through its Library and its Technical Help to Exporters Service. Various BSI electronic information services are also available which give details on all its products and services. Contact the Information Centre.
Tel: +44 (0)20 8996 7111. Fax: +44 (0)20 8996 7048. Email: info@bsi-global.com.

Subscribing members of BSI are kept up to date with standards developments and receive substantial discounts on the purchase price of standards. For details of these and other benefits contact Membership Administration.
Tel: +44 (0)20 8996 7002. Fax: +44 (0)20 8996 7001.
Email: membership@bsi-global.com.

Information regarding online access to British Standards via British Standards Online can be found at <http://www.bsi-global.com/bsonline>.

Further information about BSI is available on the BSI website at <http://www.bsi-global.com>.

Copyright

Copyright subsists in all BSI publications. BSI also holds the copyright, in the UK, of the publications of the international standardization bodies. Except as permitted under the Copyright, Designs and Patents Act 1988 no extract may be reproduced, stored in a retrieval system or transmitted in any form or by any means – electronic, photocopying, recording or otherwise – without prior written permission from BSI.

This does not preclude the free use, in the course of implementing the standard, of necessary details such as symbols, and size, type or grade designations. If these details are to be used for any other purpose than implementation then the prior written permission of BSI must be obtained.

Details and advice can be obtained from the Copyright & Licensing Manager.
Tel: +44 (0)20 8996 7070. Fax: +44 (0)20 8996 7553.
Email: copyright@bsi-global.com.