

Appliances, solid fuels and firelighters for barbecueing —

Part 2: Barbecue charcoal and barbecue charcoal briquettes — Requirements and test methods

The European Standard EN 1860-2:2005 has the status of a
British Standard

ICS 75.160.10; 97.040.20

National foreword

This British Standard is the official English language version of EN 1860-2:2005.

The UK participation in its preparation was entrusted by Technical Committee RHE/28, Domestic solid mineral fuel appliances, to Subcommittee RHE/28/1, Appliances, solid fuels and firelighters for barbecuing, which has the responsibility to:

- aid enquirers to understand the text;
- present to the responsible international/European committee any enquiries on the interpretation, or proposals for change, and keep the UK interests informed;
- monitor related international and European developments and promulgate them in the UK.

A list of organizations represented on this subcommittee can be obtained on request to its secretary.

Cross-references

The British Standards which implement international or European publications referred to in this document may be found in the *BSI Catalogue* under the section entitled “International Standards Correspondence Index”, or by using the “Search” facility of the *BSI Electronic Catalogue* or of British Standards Online.

This publication does not purport to include all the necessary provisions of a contract. Users are responsible for its correct application.

Compliance with a British Standard does not of itself confer immunity from legal obligations.

This British Standard was published under the authority of the Standards Policy and Strategy Committee on 18 March 2005

Summary of pages

This document comprises a front cover, an inside front cover, the EN title page, pages 2 to 27 and a back cover.

The BSI copyright notice displayed in this document indicates when the document was last issued.

Amendments issued since publication

Amd. No.	Date	Comments

© BSI 18 March 2005

ISBN 0 580 45626 9

English version

**Appliances, solid fuels and firelighters for barbecuing - Part 2:
Barbecue charcoal and barbecue charcoal briquettes -
Requirements and test methods**

Appareils, combustibles solides et allume-barbecue pour la
cuisson au barbecue - Partie 2 : Charbon de bois et
briquettes de charbon de bois pour barbecue - Exigences
et méthodes d'essai

Geräte, feste Brennstoffe und Anzündhilfen zum Grillen -
Teil 2: Grill-Holzkohle und Grill-Holzkohlebriketts -
Anforderungen und Prüfverfahren

This European Standard was approved by CEN on 20 October 2004.

CEN members are bound to comply with the CEN/CENELEC Internal Regulations which stipulate the conditions for giving this European Standard the status of a national standard without any alteration. Up-to-date lists and bibliographical references concerning such national standards may be obtained on application to the Central Secretariat or to any CEN member.

This European Standard exists in three official versions (English, French, German). A version in any other language made by translation under the responsibility of a CEN member into its own language and notified to the Central Secretariat has the same status as the official versions.

CEN members are the national standards bodies of Austria, Belgium, Cyprus, Czech Republic, Denmark, Estonia, Finland, France, Germany, Greece, Hungary, Iceland, Ireland, Italy, Latvia, Lithuania, Luxembourg, Malta, Netherlands, Norway, Poland, Portugal, Slovakia, Slovenia, Spain, Sweden, Switzerland and United Kingdom.



EUROPEAN COMMITTEE FOR STANDARDIZATION
COMITÉ EUROPÉEN DE NORMALISATION
EUROPÄISCHES KOMITEE FÜR NORMUNG

Management Centre: rue de Stassart, 36 B-1050 Brussels

Contents

Page

Foreword.....	3
1 Scope	5
2 Normative references	5
3 Terms and definitions	5
4 Requirements	6
4.1 General.....	6
4.2 Requirements for barbecue charcoal	7
4.3 Requirements for barbecue charcoal briquettes.....	7
4.4 Inadmissible additions	8
5 Sampling	8
5.1 Sampling for granulometry	8
5.2 Sampling for testing ash, moisture, volatile and microscopic analyses	8
6 Test methods.....	9
6.1 Moisture	9
6.2 Volatiles	10
6.3 Ash	15
6.4 Fixed carbon.....	17
6.5 Test for inadmissible additions	17
6.6 Granulometry	18
6.7 Determination of impregnant content.....	18
6.8 Test report	18
7 Marking	18
7.1 Consumer communication on charcoal bags.....	18
7.2 Consumer communication on impregnated charcoal bags	19
Annex A (normative) Determination of the volume of charcoal	21
A.1 General.....	21
A.2 Principle.....	21
A.3 Appliances	21
A.4 Sampling	21
A.5 Method of operation	21
A.6 Certificate of conformity	21
A.7 Inspection certificate	21
Annex B (normative) Determination of moisture content for impregnated charcoal and for impregnated charcoal briquettes	23
B.1 General.....	23
B.2 Principle.....	23
B.3 Reagents	23
B.4 Apparatus	23
B.5 Preparation of sample	24
B.6 Procedure	24
B.7 Expression of results	25
B.8 Precision of the method	26
B.9 Test report	26
Bibliography.....	27

Foreword

This document (EN 1860-2:2005) has been prepared by CEN /TC 281, "Appliances, solid fuels and firelighters for barbecuing", the secretariat of which is held by AENOR.

This European Standard shall be given the status of a national standard, either by publication of an identical text or by endorsement, at the latest by August 2005, and conflicting national standards shall be withdrawn at the latest by August 2005.

This document on *Appliances, solid fuels and firelighters for barbecuing* consists of the following parts:

Part 1: *Barbecues burning solid fuels - Requirements and test methods.*

Part 2: *Barbecue charcoal and barbecue charcoal briquettes - Requirements and test methods.*

Part 3: *Firelighters for igniting solid fuels for use in barbecue appliances - Requirements and test methods.*

Part 4: *Single use barbecues burning solid fuels - Requirements and test methods.*

According to the CEN/CENELEC Internal Regulations, the national standards organizations of the following countries are bound to implement this European Standard: Austria, Belgium, Cyprus, Czech Republic, Denmark, Estonia, Finland, France, Germany, Greece, Hungary, Iceland, Ireland, Italy, Latvia, Lithuania, Luxembourg, Malta, Netherlands, Norway, Poland, Portugal, Slovakia, Slovenia, Spain, Sweden, Switzerland and United Kingdom.

Introduction

This document is part 2 of the documents for appliances, solid fuels and firelighters for barbecuing, which is intended to reduce the risks which can occur during and through barbecuing with solid fuels.

1
2
3
4
5
6
7
8
9
10
11
12
13
14
15
16
17
18
19
20
21
22
23
24
25
26
27
28
29
30
31
32
33
34
35
36
37
38
39
40
41
42
43
44
45
46
47
48
49
50
51
52
53
54
55
56
57
58
59
60
61
62
63
64
65
66
67
68
69
70
71
72
73
74
75
76
77
78
79
80
81
82
83
84
85
86
87
88
89
90
91
92
93
94
95
96
97
98
99
100
101
102
103
104
105
106
107
108
109
110
111
112
113
114
115
116
117
118
119
120
121
122
123
124
125
126
127
128
129
130
131
132
133
134
135
136
137
138
139
140
141
142
143
144
145
146
147
148
149
150
151
152
153
154
155
156
157
158
159
160
161
162
163
164
165
166
167
168
169
170
171
172
173
174
175
176
177
178
179
180
181
182
183
184
185
186
187
188
189
190
191
192
193
194
195
196
197
198
199
200
201
202
203
204
205
206
207
208
209
210
211
212
213
214
215
216
217
218
219
220
221
222
223
224
225
226
227
228
229
230
231
232
233
234
235
236
237
238
239
240
241
242
243
244
245
246
247
248
249
250
251
252
253
254
255
256
257
258
259
260
261
262
263
264
265
266
267
268
269
270
271
272
273
274
275
276
277
278
279
280
281
282
283
284
285
286
287
288
289
290
291
292
293
294
295
296
297
298
299
300
301
302
303
304
305
306
307
308
309
310
311
312
313
314
315
316
317
318
319
320
321
322
323
324
325
326
327
328
329
330
331
332
333
334
335
336
337
338
339
340
341
342
343
344
345
346
347
348
349
350
351
352
353
354
355
356
357
358
359
360
361
362
363
364
365
366
367
368
369
370
371
372
373
374
375
376
377
378
379
380
381
382
383
384
385
386
387
388
389
390
391
392
393
394
395
396
397
398
399
400
401
402
403
404
405
406
407
408
409
410
411
412
413
414
415
416
417
418
419
420
421
422
423
424
425
426
427
428
429
430
431
432
433
434
435
436
437
438
439
440
441
442
443
444
445
446
447
448
449
450
451
452
453
454
455
456
457
458
459
460
461
462
463
464
465
466
467
468
469
470
471
472
473
474
475
476
477
478
479
480
481
482
483
484
485
486
487
488
489
490
491
492
493
494
495
496
497
498
499
500
501
502
503
504
505
506
507
508
509
510
511
512
513
514
515
516
517
518
519
520
521
522
523
524
525
526
527
528
529
530
531
532
533
534
535
536
537
538
539
540
541
542
543
544
545
546
547
548
549
550
551
552
553
554
555
556
557
558
559
560
561
562
563
564
565
566
567
568
569
570
571
572
573
574
575
576
577
578
579
580
581
582
583
584
585
586
587
588
589
590
591
592
593
594
595
596
597
598
599
600
601
602
603
604
605
606
607
608
609
610
611
612
613
614
615
616
617
618
619
620
621
622
623
624
625
626
627
628
629
630
631
632
633
634
635
636
637
638
639
640
641
642
643
644
645
646
647
648
649
650
651
652
653
654
655
656
657
658
659
660
661
662
663
664
665
666
667
668
669
670
671
672
673
674
675
676
677
678
679
680
681
682
683
684
685
686
687
688
689
690
691
692
693
694
695
696
697
698
699
700
701
702
703
704
705
706
707
708
709
710
711
712
713
714
715
716
717
718
719
720
721
722
723
724
725
726
727
728
729
730
731
732
733
734
735
736
737
738
739
740
741
742
743
744
745
746
747
748
749
750
751
752
753
754
755
756
757
758
759
760
761
762
763
764
765
766
767
768
769
770
771
772
773
774
775
776
777
778
779
780
781
782
783
784
785
786
787
788
789
790
791
792
793
794
795
796
797
798
799
800
801
802
803
804
805
806
807
808
809
810
811
812
813
814
815
816
817
818
819
820
821
822
823
824
825
826
827
828
829
830
831
832
833
834
835
836
837
838
839
840
841
842
843
844
845
846
847
848
849
850
851
852
853
854
855
856
857
858
859
860
861
862
863
864
865
866
867
868
869
870
871
872
873
874
875
876
877
878
879
880
881
882
883
884
885
886
887
888
889
890
891
892
893
894
895
896
897
898
899
900
901
902
903
904
905
906
907
908
909
910
911
912
913
914
915
916
917
918
919
920
921
922
923
924
925
926
927
928
929
930
931
932
933
934
935
936
937
938
939
940
941
942
943
944
945
946
947
948
949
950
951
952
953
954
955
956
957
958
959
960
961
962
963
964
965
966
967
968
969
970
971
972
973
974
975
976
977
978
979
980
981
982
983
984
985
986
987
988
989
990
991
992
993
994
995
996
997
998
999
1000

1 Scope

This part of this document specifies the requirements and test methods for charcoal and charcoal briquettes for use in BBQ appliances.

2 Normative references

The following referenced documents are indispensable for the application of this document. For dated references, only the edition cited applies. For undated references, the latest edition of the referenced document (including any amendments) applies.

EN 1860-3:2003, *Appliances, solid fuels and firelighters for barbecuing - Part 3: Firelighters for igniting solid fuels for use in barbecue appliances - Requirements and test methods*

ISO 562, *Hard coal and coke — Determination of volatile matter*

ISO 579, *Coke — Determination of total moisture*

ISO 975, *Brown coals and lignites — Determination of yield of benzene-soluble extract — Semi-automatic method*

ISO 1171, *Solid mineral fuels — Determination of ash*

ISO 1953, *Hard coal — Size analysis by sieving*

ISO 1988, *Hard coal — Sampling*

ISO 5069-2:1983, *Brown coals and lignites - Principles of sampling —Part 2: Sample preparation for determination of moisture content and for general analysis.*

ISO 7404-2, *Methods for the petrographic analysis of bituminous coal and anthracite — Part 2: Preparation of coal samples*

ISO 7404-3, *Methods for the petrographic analysis of bituminous coal and anthracite — Part 3: Method of determining maceral group composition*

3 Terms and definitions

For the purposes of this document, the following terms and definitions apply

3.1

barbecue charcoal

solid remainder of carbonization of wood or other vegetable matter that does not spit/spark abnormally when burning and has not been artificially chemically treated or artificially chemically prepared whereby the main constituent is carbon and the ash content is minimal

3.2

barbecue charcoal briquette

barbecue charcoal briquettes are produced by compressing barbecue charcoal particles together with a suitable binder

3.3

impregnated barbecue charcoal and impregnated barbecue charcoal briquette

barbecue charcoal and barbecue charcoal briquettes prepared for lighting by addition of a lighting agent

3.4

fixed carbon

carbon remaining after the removal of volatile carbon matter and ash from dry charcoal

3.5

volatile matter

determined as the loss in mass less that due to moisture, when charcoal or charcoal briquettes is heated out of contact with air under standardised conditions

3.6

ash

residue after charcoal or charcoal briquettes are incinerated in air

3.7

total moisture

3.7.1

total moisture of barbecue charcoal and barbecue charcoal briquettes

water contained in the barbecue charcoal and the barbecue charcoal briquettes which is driven off at 105°C

3.7.2

total moisture of impregnated barbecue charcoal and impregnated barbecue charcoal briquettes

water contained in the impregnated barbecue charcoal and the impregnated barbecue charcoal briquettes which is removed by distillation with toluene

3.8

granulation

percentage by weight of charcoal which has been screened between two specific sizes

3.9

binder

product which when added to charcoal granules holds the particles together in a permanent solid mass

3.10

chemical sustainers

chemicals such as nitrates and nitrites added as oxidising agents to sustain burning

3.11

repeatability

results of duplicate determinations, carried out at different times in the same laboratory by the same operator using the same apparatus on duplicate samples taken from the same gross sample at the last stage of sample preparation, should not differ by more than the values indicated in 6.1.6, 6.2.6 and 6.3.6

3.12

reproducibility

means of the results of duplicate determinations, carried out in each of two different laboratories on representative portions taken from the same gross sample at the final stage of sample preparation, should not differ by more than the values indicated in 6.1.6, 6.2.6 and 6.3.6

4 Requirements

4.1 General

Impregnated barbecue charcoal and impregnated barbecue charcoal briquettes shall fulfil the requirements for barbecue charcoal and barbecue charcoal briquettes together with the requirements of EN 1860-3.

4.2 Requirements for barbecue charcoal

4.2.1 Fixed carbon

The fixed carbon in the dry charcoal shall be minimum of 75% by mass, calculated in accordance with 6.4.

4.2.2 Ash

The ash content in the dry charcoal shall not exceed 8%, when tested according to 6.3.

4.2.3 Total moisture

The total moisture content shall not exceed 8%, when tested according to 6.1.

4.2.4 Granulation

The particle size for the barbecue charcoal shall be 0 mm to 150 mm:

- No more than 10% may exceed 80 mm in size.
- At least 80% shall be greater than 20 mm.
- 0 mm- 10 mm shall not exceed 7%.

testing in accordance with 6.6.

4.2.5 Volatiles

The volatiles must be carried out to allow determination of fixed carbon but no limits are set as maximum or minimum.

4.2.6 Bulk density

The bulk density must be at least 130 kg/m³.

4.3 Requirements for barbecue charcoal briquettes

4.3.1 Fixed carbon

The fixed carbon of dry barbecue charcoal briquettes shall be minimum 60%, calculated in accordance with 6.4.

4.3.2 Ash

The ash content of dry barbecue charcoal briquettes shall be maximum 18%, when tested in accordance with 6.3.

4.3.3 Moisture

The moisture content of barbecue charcoal briquettes shall not be above 8%, when tested in accordance with 6.1.

4.3.4 Granulation

The form and size of barbecue charcoal briquettes shall be suitable for use with barbecue equipment complying with EN 1860- 1. The granules less than 20 mm shall not exceed 10%, when tested in accordance with 6.6.

4.3.5 Binder

The binder must cause no health hazards when its combustion gases come into contact with food and the binder itself must be food grade quality.

4.4 Inadmissible additions

4.4.1 Microscopic analysis

Microscopic analysis in accordance with 6.5 should not detect more than 10 particles in 1 000 particles of any substance which is not normally found after the distillation of wood to produce wood charcoal or in permissible binder in wood charcoal briquettes.

The following inclusions are examples of inadmissible substances.

Organic: such as all fossil coals and derivatives thereof, petroleum, coke, pitch, plastic, etc.

Inorganic: such as glass, slag, rust, splinters of metal, stone powder, etc.

The total of all detected inadmissible additions should not exceed 1% by volume, when tested in accordance with 6.5.

4.4.2 Chemical burning sustainers, shall not be permitted.

5 Sampling

5.1 Sampling for granulometry

The granulation test must be carried out using randomly selected bags on general sale using a minimum total sample weight of 40 kg.

Take the whole of each package and combine it to form the sample for granulometry analysis.

5.2 Sampling for testing ash, moisture, volatile and microscopic analyses

5.2.1 Preparation

Take the whole of the sample used to test granulometry and crush until 100% of the whole sample is less than 20 mm.

The samples for individual analysis are obtained from this < 20 mm sample by the quartering method.

5.2.2 Materials for use in the quartering method

A suitable sized sheet of glazed paper or plastic.

A cardboard or wooden board of suitable dimensions.

5.2.3 Quartering method

Place a clean dry sheet on the floor or alternatively in a box of suitable dimensions if preferred.

Pour the complete < 20 mm sample onto the sheet or in the box to form a cone or pyramid.

Divide the cone or pyramid into four parts in two operations using a cardboard or wooden board. The height and width of the board used must be greater than the height and width of the cone or pyramid formed by the sample on the sheet.

Select one of the four parts and repeat the process until approximately a 2 kg sample remains.

Take two of the final quarters, i.e. 2 x approximately 500 g samples, and seal in airtight jars for moisture testing.

Take a further quarter (approximately 500 g) for ash, volatile and microscopic analysis.

Take the final quarter for volatile testing and seal in an airtight jar and retain as a reference sample.

This whole process of granulometry testing, reducing sample to < 20 mm and subsequent quartering procedure must be undertaken at one time and as quickly as possible in order to minimise possible moisture loss from the bulk sample.

6 Test methods

6.1 Moisture

6.1.1 Principle

By modifying ISO 579 a sample is heated in air at 105°C - 110°C and maintained at this temperature until constant mass is obtained. The percentage moisture content is calculated from the loss in mass of the sample. Charcoal and charcoal briquettes are not liable to significant oxidation under the conditions stated.

For impregnated charcoal and impregnated charcoal briquettes the impregnant must be extracted before carrying out the test. The moisture test shall be done in accordance with Annex B.

6.1.2 Apparatus

6.1.2.1 Air oven capable of maintaining a substantially uniform temperature zone at 105° C - 110°C and in which the rate of atmosphere change is sufficiently rapid for the test.

6.1.2.2 Tray approximately 0,1 m² in area and 25 mm deep made of non-corrodible material such as stainless steel, tinned steel or aluminium.

6.1.2.3 Balance accurate to 1 g.

6.1.3 Sample

The sample shall consist of 500 g of charcoal or charcoal briquettes prepared in accordance with the rules prescribed in sampling.

6.1.4 Procedure

Weigh, to the nearest 0,1%, the sample and container as received. Weigh the dry, empty tray, transfer the sample as completely as possible to the tray and spread evenly. Place the charged tray in the oven at the

temperature of 105°C - 110°C. Dry the wet container with any sample adhering to it by warming, transfer the remaining sample to the tray and weigh the dry, empty container. Heat the tray and its contents until constant mass is obtained, weighing the tray hot to avoid absorption of moisture during cooling.

6.1.5 Expression of results

The moisture content *M* of the charcoal as analysed, expressed as a percentage by mass, is given by the formula.

$$M = \frac{(m_1 - m_4) - (m_3 - m_2)}{(m_1 - m_4)} \times 100$$

where

M is the moisture content, in percentage;

*m*₁ is the mass of the container plus sample as received, in grams;

*m*₂ is the mass of the dry, empty tray, in grams;

*m*₃ is the mass of the tray plus sample after heating, in grams;

*m*₄ is the mass of the dry, empty container, in grams;

The result, preferably the mean of duplicate determinations, shall be reported to the nearest 0,1%.

6.1.6 Precision of the method

Table 1 — Precision of the method

Total moisture content	Maximum acceptable differences	
	Between results obtained	
	In the same laboratory	In different laboratories
	(Repeatability)	(Reproducibility)
	0,5% absolute	0,7% absolute

6.2 Volatiles

The test is empirical and, in order to ensure reproducible results, it is essential that the rate of heating, the final temperature and the overall duration of the test shall be carefully controlled. The moisture content of the sample shall be determined at the same time as the volatile matter content so that the appropriate correction can be made.

The apparatus and procedure are so specified that one or more determinations may be carried out simultaneously in the muffle furnace.

6.2.1 Principle

By modifying ISO 562 the sample is heated at 900° C out of contact with air for 7 min. The percentage of volatile matter is calculated from the loss in mass of the sample after deducting the loss in mass due to moisture.

For impregnated charcoal and impregnated charcoal briquettes the impregnant must be extracted before carrying out the test.

6.2.2 Reagents

Desiccant, fresh or freshly regenerated and preferably self indicating. Suitable desiccants are silica gel, activated alumina and anhydrous calcium sulphate.

6.2.3 Apparatus

6.2.3.1 Muffle furnace, heated by electricity, in which an adequate zone at a constant and uniform temperature of (900 ± 10) °C can be maintained. It may be of the stop-ended type or fitted at the back with a flue approximately 25 mm diameter and 150 mm long.

Its heat capacity shall be such that, with an initial temperature of 900°C, a minimum temperature of 885° C is regained within 4 min, preferably within 3 min, of the insertion of a cold stand and its crucible(s), the temperature being measured with an unsheathed thermocouple, as described in 6.2.3.2. Normally the furnace will be designed specifically either for receiving one crucible and its stand or for multiple determinations using a number of crucibles in one stand.

The temperature of 900°C shall be attained as closely as possible and the tolerance of $\pm 10^\circ$ C is specified so as to meet inherent errors in the temperature measurement and lack of uniformity in the temperature distribution.

A position for the crucible stand shall be chosen within the zone of uniform temperature and this position used for all determinations.

6.2.3.2 Pyrometer

The temperature characteristics of the furnace shall be checked with an unsheathed thermocouple, of wire not thicker than 1 mm. The thermojunction shall be inserted midway between the base of the crucible in its stand and the floor of the furnace. If the stand holds more than one crucible, then the temperature under each crucible shall be checked in the same manner. If desired, a sheathed thermocouple may be permanently installed in the furnace with its thermojunction as close as possible to the centre of the zone of uniform temperature; in this case, its temperature readings shall be correlated at frequent intervals with those of the unsheathed thermocouple, which is then inserted only when necessary.

NOTE The temperature/electromotive force relationship of a thermojunction maintained at elevated temperatures gradually changes with time.

6.2.3.3 Crucible and lid

A cylindrical crucible with a well fitting lid, both of fused silica. The crucible and lid shall have a mass between 10 g and 14 g and dimensions approximating to those shown in Figure 1. The fit of the lid on the crucible is critical to the determination and a lid shall be selected to match the crucible so that the horizontal clearance between them is not greater than 0,5 mm. After selection, the crucible and the lid shall be ground together to give smooth surfaces and then be given a common distinguishing mark.

Dimensions in millimetres

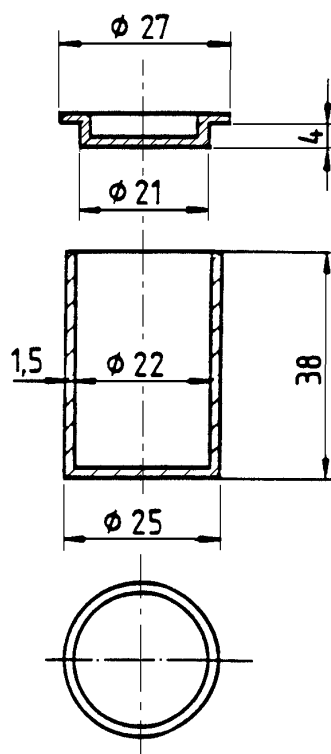


Figure 1 — Silica crucible and lid crucible made of silica must be used.

6.2.3.4 Stand

On which the crucible is placed in the muffle furnace, such that the appropriate rate of heating can be achieved. For example, it may consist of the following:

- for single determination: a ring of heat-resistant steel wire as shown in Figure 2, with two suitable refractory material disks, 25 mm diameter and 1 mm thick, resting on the inner projection of its legs; or
- for multiple determinations: a tray of heat-resistant steel wire as shown in Figure 3, of appropriate size, with a suitable refractory material plate 2 mm thick supporting the crucible.

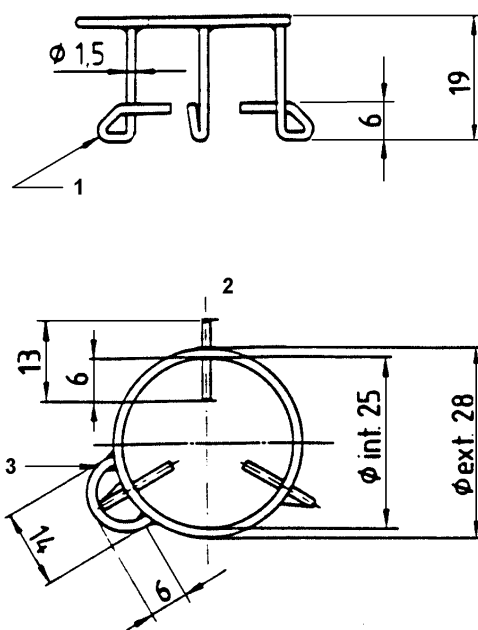
6.2.3.5 Balance, accurate to 0,1 mg

6.2.4 Preparation of sample

The charcoal used for the determination of volatile matter is the analysis sample ground to pass a sieve of 212 μm aperture.

Before commencing the determination, mix the analysis sample thoroughly for at least 1 min, preferably by mechanical means.

Dimensions in millimetres

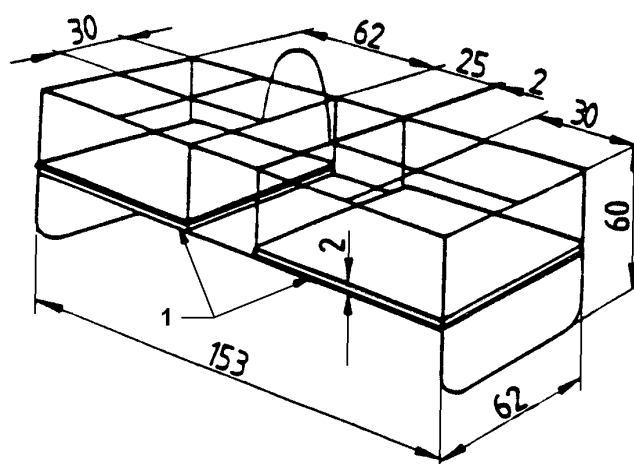


Key

- 1 Three legs spaced at 120° apart
- 2 Ring
- 3 Handle

Figure 2 — Crucible stand for a single determination

Dimensions in millimetres



Key

- 1 Suitable refractory material sheets

Figure 3 — Crucible stand for multiple determinations

6.2.5 Procedure

Heat in the muffle furnace at $(900 \pm 10)^\circ\text{C}$ for 7 min either on crucible and lid or the requisite number of crucibles and lids to fill the multiple stand. Remove from the furnace, allow the crucible(s) to cool first on a metal slab and finally in a desiccator located next to the balance.

- a) As soon as these are cool, weigh each empty crucible and lid and weigh into each crucible, to the nearest 0,1 mg, 1,00 g to 1,01 g of sample. As we must express the results on a dry basis the following initial action is taken:
- b) Heat the crucible without the lid to 105°C - 110°C for 1 h.
- c) Cool in a desiccator.
- d) Reweigh the crucible and dried charcoal powder and calculate the exact weight of dried charcoal remaining in the crucible to be tested for volatile content.
- e) Replace the lid and tap the crucible on a clean, hard surface until the sample forms a layer of even thickness on the bottom of the crucible.

Precisely similar treatment of the crucible before and after the determination minimises the effect of any film of water absorbed on its surface, while the rapid cooling reduces absorption of moisture by the charcoal residue.

- f) Adjust the temperature of the zone in the muffle furnace to $900^\circ\text{C} \pm 10^\circ\text{C}$.
- g) Place the charged crucibles in a cold stand and transfer to the furnace. Close the door and allow to remain for exactly 7 min. Remove, cool in a desiccator and weigh the crucible(s) to establish m_3 as required to calculate and express the results.
- h) If multiple determinations are being made any vacant places in the stand should be filled with empty crucibles.

6.2.6 Expression of results

The volatile matter V on a dry basis expressed as a percentage by mass, is given by the equation

$$V = \frac{(m_2 - m_3)}{(m_2 - m_1)} \times 100$$

where

V is the volatile matter, as a percentage by mass, in the sample analysed;

m_1 is the mass of the empty crucible and lid, in grams;

m_2 is the mass of the crucible and lid and sample after drying at 105°C for 1 h, in grams;

m_3 is the mass of the crucible and lid and content after heating, in grams;

The results (preferably the mean of duplicate determinations) shall be reported to the nearest 0,1%.

6.2.7 Precision of the method

Table 2 — Precision of the method

Sample	Maximum acceptable differences	
	Between results obtained (calculated to the same moisture content)	
	In the same laboratory (Repeatability)	In different laboratories (Reproducibility)
Charcoal and charcoal briquettes of volatile matter Content > 10 %	0,3% absolute	0,5% absolute

6.2.8 Impregnated products

Before testing impregnated barbecue charcoal or impregnated barbecue charcoal briquettes the impregnant must be extracted according to 6.7

6.3 Ash

6.3.1 Principle

By modifying ISO 1171 the sample is heated in air at a specified rate up to a temperature of $(710 \pm 10)^{\circ}\text{C}$ and maintained at this temperature until constant in mass.

The percentage of ash is calculated from the mass of the residue after incineration.

For impregnated charcoal and impregnated charcoal briquettes the impregnant must be extracted before carrying out the test.

6.3.2 Apparatus

6.3.2.1 Balance, accurate to 0,1 mg

6.3.2.2 Muffle furnace capable of giving a zone of substantially uniform temperature at the levels required by the procedure and of reaching these levels in the specified times. The ventilation through the muffle furnace shall be such as to give above five air changes per minute.

The number of air changes per minute can be assessed by the measurement of the air flow in the muffle furnace flue by means of a pitot-static tube and sensitive manometer.

6.3.2.3 Dish of silica, porcelain, or platinum, 10 mm to 15 mm deep, with lid. The diameter of the dish shall be such that the surface (mass) density of the sample layer does not exceed 0,15 g/cm².

6.3.2.4 Insulating plate of silica, 6 mm thick, or its equivalent, of such size as to be an easy sliding fit into the muffle furnace.

6.3.3 Preparation of sample

The charcoal used for the determination of ash is the analysis sample ground to pass a sieve of 200 µm aperture.

Before commencing the determination, mix the analysis sample thoroughly for at least 1 min, preferably by mechanical means.

6.3.4 Procedure

NOTE If a silica dish is used, before its initial mass is determined, it shall be heated to (710 ± 10)° C, maintained at this temperature for 15 min and then cooled under the conditions specified for the actual determination.

Weigh to the nearest 0,1 mg, the clean, dry dish and lid (see the Note) spread 1 g to 2 g of the sample evenly in the dish.

The results are expressed on a dry basis. Therefore the following initial action is taken:

- a) Heat the dish and sample at 105° C to 110°C for 1 h.
- b) Cool in a dessicator.
- c) Reweigh the dish and dried charcoal powder and calculate the exact weight of dried charcoal remaining in the dish to be tested for ash content.

Insert the uncovered dish in the muffle furnace at room temperature. Raise the temperature to 250°C in 30 min from 250°C to 500°C in a further 30 min; from 500°C to (710 ± 10)° C in a further 60 min and maintain until constant mass is achieved.

When incineration is complete cover the dish with its lid, remove the dish from the furnace, cover the dish with its lid, and allow to cool on a thick metal plate for 10 min and with optional subsequent transfer to a desiccator without disiccant.

When cool, weigh to the nearest 0,1 mg, the dish covered with its lid. Reheat at (710 ± 10)° C for a further 15 min period until any further change in mass does not exceed 1 mg.

6.3.5 Expression of results

The ash *A* of the sample as analysed, expressed as a percentage by mass, on a dry basis is given by the formula

$$A = \frac{(m_3 - m_1)}{(m_2 - m_1)} \times 100$$

where

A is the ash content in percentage;

*m*₁ is the mass of the dish plus lid, in grams;

m_2 is the mass of dish plus lid plus sample after drying at 105° C to 110°C for 1 h, in grams;

m_3 is the mass of dish plus lid plus ash, in grams.

The result (preferably the mean of duplicate determinations) shall be reported in accordance with 6.8 to the nearest 0,1%.

6.3.6 Precision of the method

Table 3 — Precision of the method

Ash	Maximum acceptable differences	
	Between results obtained	
	(calculated to the same moisture content)	
	In the same laboratory (Repeatability)	In different laboratories (Reproducibility)
Less than 10 %	0,2% absolute	0,3% absolute
10% and over	2,0 % of the mean result	3,0 % of the mean result

If the final crushing to pass a 200 µm sieve is carried out in different laboratories, the values for the reproducibility given above may be exceeded.

6.3.7 Impregnated product

Before testing impregnated barbecue charcoal or impregnated barbecue charcoal briquettes the impregnant must be extracted according to 6.7.

6.4 Fixed carbon

The percentage by weight of fixed carbon is mathematically calculated by the following equation.

$$C(fix) = 100 - (F + A)$$

F is the volatile matter content expressed as a percentage by weight of the water free material (WF)

A ash as a percentage by weight of water free material (WF)

6.5 Test for inadmissible additions

The sample must be ground in accordance with ISO 1988.

The crushed material is placed on a polished surface which has been prepared in accordance with ISO 7404-2. It is then examined for inadmissible additions under a microscope in accordance with ISO 7404-3.

The investigation is carried out by means of reflected light using:

- a) normal white light;

- b) polarised light;
- c) blue light excitation;
- d) all at 300 x magnification.

The quantification of inadmissible additions is given as a percentage by volume (Vol %) and is carried out according to ISO 7403 with the following modifications:

- a minimum of 1 000 particles has to be counted disregarding particles in the mounting medium;
- the results of the counting are presented as a percentage by volume rounded to the nearest integer;
- before testing impregnated barbecue charcoal or impregnated barbecue charcoal briquettes the impregnant must be removed.

6.6 Granulometry

The sample is carefully sieved with round test sieves with a hole diameter of 150 mm, 80 mm, 20 mm and 10 mm, in accordance with ISO 1953. The respectively sieved amount is determined by weighing. The sieve is riddled until no further notable passing takes place. Stalky pieces longer than 150 mm may occur which can fall through the sieve in another direction. These pieces should be classified in the 20 - 80 fraction.

6.7 Determination of impregnant content

The impregnated barbecue charcoal or impregnated barbecue charcoal briquettes are to be extract with N-hexane in accordance with ISO 975 and percentage level of the extracted impregnant is to be determined with 4.1.1 of EN 1860-3:2003 method.

6.8 Test report

The test report shall include the following particulars:

- a) an identification of the product tested;
- b) the results and the basis of analysis;
- c) an unusual features noted during the determination;
- d) deviation from this document.

7 Marking

7.1 Consumer communication on charcoal bags

The packaging of the charcoal and the charcoal briquettes to be sold should bear the following markings:

- a) Contents indication must be marked on the bag for both barbecue charcoal and barbecue charcoal briquettes and their impregnated versions. The content indication can be made either in weight or in volume according to National Law unless any subsequent EC Law supersedes it.
- b) "Barbecue Charcoal" or "Barbecue Charcoal Briquettes" will be the minimum marking/description of the contents.

- c) Instructions should specify considerations of safety, health and usage for the correct and safe use of the product.
- d) The number of this document (the compliance with this document must be proved by a certified laboratory).

NOTE The test method for the determination of the volume of charcoal is submitted in Annex A (normative).

7.2 Consumer communication on impregnated charcoal bags

7.2.1 Consumer instructions on “just light the bag” charcoal products

The packaging of the impregnated charcoal and impregnated charcoal briquettes to be sold should bear the following markings if sold in a bag which should be used unopened:

- a) Do not open the bag.
- b) Put the bag in the barbecue.
- c) Light the corners of the bag.
- d) Do not put new bags on a barbecue once cooking food has commenced.
- e) Content, i.e. 4x1 kg, 1x1, 4 kg, 2x LT, etc.
- f) "WARNING: Do not put additional impregnated barbecue charcoal or impregnated barbecue charcoal briquettes onto a barbecue once cooking has commenced"
- g) Impregnated barbecue charcoal or impregnated barbecue charcoal briquettes will have a clear indication on the packaging that the product is impregnated.

WARNINGS:

- do not use indoors;
- keep children at a safe distance;
- do not expose bags to extreme temperatures;
- do not use an additional starting agent after the barbecue is lit.

7.2.2 Consumer instructions on “match light” charcoal products

The packaging of the impregnated charcoal and impregnated charcoal briquettes to be sold should bear the following markings if sold in a bag which contains loose product suitable for multiple barbecue use.

- a) Put sufficient impregnated BBQ charcoal or impregnated BBQ charcoal briquettes into the barbecue.
- b) Light the charcoal or charcoal briquettes.
- c) Do not add additional loose impregnated fuel onto a BBQ once cooking food has commenced.

WARNINGS:

- do not use indoors;
- keep children at a safe distance;

- do not expose bags to extreme temperatures;
- do not use an additional starting agent after the barbecue is lit.

Annex A **(normative)**

Determination of the volume of charcoal

A.1 General

This annex describes a method for determining the volume of charcoal contained in a bag whose contents are marked in litres. It applies to charcoal as specified in EN 1860-2.

A.2 Principle

A standardised container which corresponds with the volume marked on the bag is filled with charcoal. The free surface of the charcoal is levelled off using a ruler.

The difference between the volume of the contents in the bag and the volume of the container is evaluated by the average distance between the upper surface of the charcoal and the rule pressed onto the edge of the container.

A.3 Appliances

The container with a volume identical to the one marked on the bag has a cylindrical shape, is of rigid construction: the height and the internal diameter must be equal.

The levelling ruler must be rigid, straight, and with straight square or oblong cross-section.

A.4 Sampling

The inspections must be carried out on bags of merchantable quality, taken as samples directly from the points of sale.

A.5 Method of operation

Open the bag, slowly pour the charcoal into the inspection container. The pouring height must be as low as possible, as the bag opening is held at the height of the top of the container.

Once the bag is completely empty, leave-off the top of the heap of charcoal using a ruler which must be able to rest in any direction on the upper rims of the container.

A.6 Certificate of conformity

The contents of the bags are declared to be in conformity where the ruler touches the upper pieces of charcoal or if the distance between the ruler and the tops of the pieces of charcoal does not exceed one centimetre.

A.7 Inspection certificate

The certificate must show the inspection conditions:

- Place: The trade name and address of the point of sale from which the bag was sampled.
- Sales denomination of the product, packing code, name and address of the manufacturer or distributor.
- The volume of the bag.
- The volume of the container.
- Certificate of conformity or of non-conformity.
- The approved body which has carried out the inspection.

Annex B (normative)

Determination of moisture content for impregnated charcoal and for impregnated charcoal briquettes

B.1 General

This annex specifies a direct volumetric method of determining the moisture content of brown coals and lignites. It may be used for the determination of either total moisture or the moisture in the analysis sample.

B.2 Principle

A test portion is heated under reflux conditions in a flask containing boiling toluene or xylene. The moisture is entrained by the toluene or xylene vapour and carried to a condenser fitted with a graduated receiver. The water then separates in the receiver to form a lower layer while the excess reagent is returned to the distillation flask by means of an overflow. The moisture content is calculated from the mass of sample taken and the volume of water collected.

NOTE The results obtained using toluene and xylene may not be identical for all brown coals and lignites. It is preferable to use toluene, as opposed to xylene, in cases where the latter may cause liberation of water from coal functional groups. Furthermore, to obtain moisture results comparable to alternative methods such as that described in ISO 5068:1983, *Brown coals and lignites - Determination of moisture content - Indirect gravimetric method*, it is advisable to employ toluene which boils in a range similar to the drying temperature specified in ISO 5068.

B.3 Reagents

During the analysis, use only reagents of recognized analytical grade, and distilled water or water of equivalent purity.

B.3.1 Toluene (see Note in B.3.2), distillation point 110 °C.

or

B.3.2 Xylene (see Note below), distillation interval 135 °C to 140 °C.

WARNING — Xylene and toluene are flammable, and toxic by inhalation, ingestion or skin absorption.

NOTE In view of the low solubility of water in either toluene or xylene, it can be shown that only a very small error in the determination could arise from variations in the condition of saturation of the entraining reagent. However, in order to reduce this error to insignificance, it is recommended that the reagent be used in the same condition for the determination as during calibration of the apparatus.

B.4 Apparatus

All graduated apparatus shall be of the best analytical quality available.

B.4.1 Distillation flask, of minimum capacity 500 ml.

B.4.2 Condenser, having a minimum length of water jacket of 200 mm, and fitted with an extended lip to direct the distillate into the receiver without touching the sides.

B.4.3 Receiver, for the condensed water, graduated in 0,1 ml.

It is important that the receiver and condenser be clean. To ensure this, they shall be treated with a cleansing reagent such as a strong solution of potassium dichromate in sulphuric acid.

The condenser, receiver and flask are fitted together by means of ground glass joints. An overflow tube connected to the receiver or to the lower portion of the condenser permits the return of condensed reagent to the distillation flask. The condenser may be fitted to condense either an upward-flowing or downward-flowing vapour stream.

B.4.4 Pieces of glass tubing, 5 mm in diameter and 5 mm long, with sharp edges, to be used as boiling aids.

B.4.5 Spray tube, of glass, through which the reagent can be supplied to wash down the inner surface of the condenser. This precaution is required only when an upward-flow condenser is employed.

B.4.6 Burette, graduated in 0,05 ml divisions.

B.4.7 Balance, accurate to 10 mg.

B.5 Preparation of sample

B.5.1 Prepare the sample for the determination of total moisture in accordance with ISO 5069-2:1983, Clause 7.

NOTE If the air-drying process has been carried out according to ISO 5069-2:1983, Clause 9, the total moisture, M_T expressed as a percentage by mass, is calculated from the formula.

$$M_T = W_{ex} + M \left(1 - \frac{W_{ex}}{100}\right)$$

where

W_{ex} is the moisture loss due to air-drying, expressed as a percentage by mass;

M , is the percentage of residual moisture in the air-dried sample.

B.5.2 Prepare the sample for the determination of moisture in the analysis sample in accordance with ISO 5069-2:1983, Clause 8.

B.6 Procedure

B.6.1 Calibration of apparatus

Calibrate each apparatus by distilling a series of accurately known volumes of water, measured using the burette, covering the range of moisture contents likely to be encountered in the samples to be tested.

Plot a graph, showing the volume in millilitres of water added against the scale reading of the water recovered in the receiver. Use the graph to correct the volume of water obtained in each test.

The calibration shall be repeated when there is any change of reagents or of any part of the apparatus.

B.6.2 Test portion

Before commencing the determination of moisture in the analysis sample, mix the air-dried sample thoroughly for at least 1 min, preferably by mechanical means.

Weigh, to the nearest 0,01 g, about 50 g of the sample (when the moisture content is expected to be above 20 % (m/m), weigh 25 g), and transfer to the dry distillation flask. Add 200 ml of the toluene or xylene in such a way that any sample adhering to the neck or side of the flask is washed down by the reagent.

NOTE The mass of the test portion and the size of the receiver are interrelated. In general, the condensed water should occupy at least one-third of the graduated volume of the receiver.

B.6.3 Determination

Fill the receiver with the same reagent. Place two or three pieces of the glass tubing in the distillation flask to prevent violent ebullition and assemble the apparatus. Start the flow of water through the condenser and heat the flask uniformly and gently so that its contents begin to boil after about 15 min. Subsequently adjust the rate of heating to ensure a distillation rate of 2 to 4 drops per second.

Continue the distillation until the toluene or xylene reflux is clear and no further water collects in the receiver. If a condenser is used for an upwardflowing vapour steam, wash down any drops of water adhering to the inner surface of the condenser or to the upper walls of the receiver with the reagent employed using the spray tube, and continue the distillation for a sufficient time to ensure that any water washed back into the distillation flask has been carried over into the receiver. Allow the cloudiness of the distillate to clear and read the volume of water collected in the receiver.

B.7 Expression of results

Assuming that the density of the water is 1 g/ml, the moisture content, M of the analysed sample, expressed as a percentage by mass, is given by the formula

$$M = \frac{V_c}{m} \times 100$$

where

V_c is the corrected volume, in millilitres, of water read from the graph;

m is the mass, in grams, of the test portion.

The result obtained represents:

- percentage by mass of total moisture in the sample, if the latter has not been air-dried previously; or
- percentage of residual moisture, if any air drying procedure has been included in the preparation of the sample; or
- percentage of moisture in the analysis sample.

The final result shall be reported to the nearest 0,1 % (m/m).

B.8 Precision of the method

B.8.1 Repeatability

The maximum acceptable difference between single determinations carried out in one laboratory on two separate moisture samples taken simultaneously, in accordance with ISO 5069-2, shall not exceed the values given in Table B.1.

B.8.2 Reproducibility

The maximum acceptable difference between single determinations carried out in different laboratories on two separate moisture samples taken simultaneously, in accordance with ISO 5069-2, shall not exceed the values given in Table B.1.

Table B.1 — Precision data

Moisture content	Maximum acceptable differences between results	
	Repeatability	Reproducibility
Less than 20 % (m/m)	0,4 % (m/m)	0,8 % (m/m)
20 % (m/m) and over	2,0 % of result	4,0 % of result

B.9 Test report

The test report shall include the following particulars:

- reference of the method used;
- entraining reagent used and its degree of saturation (i.e. "wet" or "dry");
- result and the method of expression used;
- any unusual features noted during the determination;
- any operation not included in this document or in the standard to which a reference is made, or any optional operations.

Bibliography

- [1] ISO 5068: 1993, *Brown coals and lignites — Determination of moisture content — Indirect gravimetric method*

BSI — British Standards Institution

BSI is the independent national body responsible for preparing British Standards. It presents the UK view on standards in Europe and at the international level. It is incorporated by Royal Charter.

Revisions

British Standards are updated by amendment or revision. Users of British Standards should make sure that they possess the latest amendments or editions.

It is the constant aim of BSI to improve the quality of our products and services. We would be grateful if anyone finding an inaccuracy or ambiguity while using this British Standard would inform the Secretary of the technical committee responsible, the identity of which can be found on the inside front cover. Tel: +44 (0)20 8996 9000. Fax: +44 (0)20 8996 7400.

BSI offers members an individual updating service called PLUS which ensures that subscribers automatically receive the latest editions of standards.

Buying standards

Orders for all BSI, international and foreign standards publications should be addressed to Customer Services. Tel: +44 (0)20 8996 9001. Fax: +44 (0)20 8996 7001. Email: orders@bsi-global.com. Standards are also available from the BSI website at <http://www.bsi-global.com>.

In response to orders for international standards, it is BSI policy to supply the BSI implementation of those that have been published as British Standards, unless otherwise requested.

Information on standards

BSI provides a wide range of information on national, European and international standards through its Library and its Technical Help to Exporters Service. Various BSI electronic information services are also available which give details on all its products and services. Contact the Information Centre. Tel: +44 (0)20 8996 7111. Fax: +44 (0)20 8996 7048. Email: info@bsi-global.com.

Subscribing members of BSI are kept up to date with standards developments and receive substantial discounts on the purchase price of standards. For details of these and other benefits contact Membership Administration. Tel: +44 (0)20 8996 7002. Fax: +44 (0)20 8996 7001. Email: membership@bsi-global.com.

Information regarding online access to British Standards via British Standards Online can be found at <http://www.bsi-global.com/bsonline>.

Further information about BSI is available on the BSI website at <http://www.bsi-global.com>.

Copyright

Copyright subsists in all BSI publications. BSI also holds the copyright, in the UK, of the publications of the international standardization bodies. Except as permitted under the Copyright, Designs and Patents Act 1988 no extract may be reproduced, stored in a retrieval system or transmitted in any form or by any means – electronic, photocopying, recording or otherwise – without prior written permission from BSI.

This does not preclude the free use, in the course of implementing the standard, of necessary details such as symbols, and size, type or grade designations. If these details are to be used for any other purpose than implementation then the prior written permission of BSI must be obtained.

Details and advice can be obtained from the Copyright & Licensing Manager. Tel: +44 (0)20 8996 7070. Fax: +44 (0)20 8996 7553. Email: copyright@bsi-global.com.

BSI
389 Chiswick High Road
London
W4 4AL