

UL 1082

ISBN 0-7629-0126-8

Household Electric Coffee
Makers and Brewing-Type
Appliances

Underwriters Laboratories Inc. (UL)
333 Pfingsten Road
Northbrook, IL 60062-2096

UL Standard for Safety for Household Electric Coffee Makers and Brewing-Type Appliances, UL 1082

Fifth Edition, Dated November 22, 1996

Revisions: This Standard contains revisions through and including May 4, 2001.

UL is in the process of converting its Standards for Safety to the Standard Generalized Markup Language (SGML), and implementing an SGML compliant document management and publishing system. SGML - an international standard (ISO 8879-1986) - is a descriptive markup language that describes a document's structure and purpose, rather than its physical appearance on a page. Significant benefits that will result from UL's use of SGML and these new systems include increased productivity, reduced turnaround times, and data and information consistency, reusability, shareability, and portability. However, the fonts, pagination, and general formatting of UL's new electronic publishing system differ from that of UL's previous publishing system. Consequently, when revision pages are issued for a Standard with the new publishing system, these differences may result in the printing of pages on which no requirements have been changed - these additional pages result from relocation of text due to repagination and reformatting of the Standard with the new publishing system.

Text that has been changed in any manner is marked with a vertical line in the margin. Changes in requirements are marked with a vertical line in the margin and are followed by an effective date note indicating the date of publication or the date on which the changed requirement becomes effective.

The following table lists the future effective dates with the corresponding item.

Future Effective Date	Reference
May 3, 2002	SA11.1.2.1 – SA11.1.2.3, SA14.7, SA19.3.2

The new and revised requirements are substantially in accordance with UL's Bulletin(s) on this subject dated January 17, 2001. The bulletin(s) is now obsolete and may be discarded.

The revisions dated May 4, 2001 include a reprinted title page (page1) for this Standard.

As indicated on the title page (page 1), this UL Standard for Safety is an American National Standard. Attention is directed to the note on the title page of this Standard outlining the procedures to be followed to retain the approved text of this ANSI/UL Standard.

As indicated on the title page (page1), this UL Standard for Safety has been adopted by the Department of Defense.

The master for this Standard at UL's Northbrook Office is the official document insofar as it relates to a UL service and the compliance of a product with respect to the requirements for that product and service, or if there are questions regarding the accuracy of this Standard.

UL's Standards for Safety are copyrighted by UL. Neither a printed copy of a Standard, nor the distribution diskette for a Standard-on-Diskette and the file for the Standard on the distribution diskette should be altered in any way. All of UL's Standards and all copyrights, ownerships, and rights regarding those Standards shall remain the sole and exclusive property of UL.

All rights reserved. No part of this publication may be reproduced, stored in a retrieval system, or transmitted in any form by any means, electronic, mechanical photocopying, recording, or otherwise without prior permission of UL.

Revisions of UL Standards for Safety are issued from time to time. A UL Standard for Safety is current only if it incorporates the most recently adopted revisions.

UL provides this Standard "as is" without warranty of any kind, either expressed or implied, including but not limited to, the implied warranties of merchantability or fitness for any purpose.

In no event will UL be liable for any special, incidental, consequential, indirect or similar damages, including loss of profits, lost savings, loss of data, or any other damages arising out of the use of or the inability to use this Standard, even if UL or an authorized UL representative has been advised of the possibility of such damage. In no event shall UL's liability for any damage ever exceed the price paid for this Standard, regardless of the form of the claim.

UL will attempt to answer support requests concerning electronic versions of its Standards. However, this support service is offered on a reasonable efforts basis only, and UL may not be able to resolve every support request. UL supports the electronic versions of its Standards only if they are used under the conditions and operating systems for which it is intended. UL's support policies may change from time-to-time without notification.

UL reserves the right to change the format, presentation, file types and formats, delivery methods and formats, and the like of both its printed and electronic Standards without prior notice.

Purchasers of the electronic versions of UL's Standards for Safety agree to defend, indemnify, and hold UL harmless from and against any loss, expense, liability, damage, claim, or judgement (including reasonable attorney's fees) resulting from any error or deviation introduced while purchaser is storing an electronic Standard on the purchaser's computer system.

If a single-user version electronic Standard was purchased, one copy of this Standard may be stored on the hard disk of a single personal computer, or on a single LAN file-server or the permanent storage device of a multiple-user computer in such a manner that this Standard may only be accessed by one user at a time and for which there is no possibility of multiple concurrent access.

If a multiple-user version electronic Standard was purchased, one copy of the Standard may be stored on a single LAN file-server, or on the permanent storage device of a multiple-user computer, or on an Intranet server. The number of concurrent users shall not exceed the number of users authorized.

Electronic Standards are intended for on-line use, such as for viewing the requirements of a Standard, conducting a word search, and the like. Only one copy of the Standard may be printed from each single-user version of an electronic Standard. Only one copy of the Standard may be printed for each authorized user of a multiple-user version of an electronic Standard. Because of differences in the computer/software/printer setup used by UL and those of electronic Standards purchasers, the printed copy obtained by a purchaser may not look exactly like the on-line screen view or the printed Standard.

An employee of an organization purchasing a UL Standard can make a copy of the page or pages being viewed for their own fair and/or practical internal use.

The requirements in this Standard are now in effect, except for those paragraphs, sections, tables, figures, and/or other elements of the Standard having future effective dates as indicated in the note following the affected item. The prior text for requirements that have been revised and that have a future effective date are located after the Standard, and are preceded by a "SUPERSEDED REQUIREMENTS" notice.

New product submittals made prior to a specified future effective date will be judged under all of the requirements in this Standard including those requirements with a specified future effective date, unless the applicant specifically requests that the product be judged under the current requirements. However, if the applicant elects this option, it should be noted that compliance with all the requirements in this Standard will be required as a condition of continued Listing, Recognition, and Follow-Up Services after the effective date, and understanding of this should be signified in writing.

Copyright © 2001 Underwriters Laboratories Inc.

This Standard consists of pages dated as shown in the following checklist:

Page	Date
1-5	May 4, 2001
6	January 8, 1999
7-8B	May 4, 2001
9-10	January 8, 1999
11	April 30, 1998
12-22	May 4, 2001
23	January 8, 1999
24-31	November 22, 1996
32-34B	May 4, 2001
35	April 30, 1998
36-37	November 22, 1996
38-38B	May 4, 2001
39-42	November 22, 1996
43-45	May 4, 2001
46-50	November 22, 1996
51-52	January 8, 1999
52A-53	May 4, 2001
54	November 22, 1996
55	April 30, 1998
56-58B	May 4, 2001
59-68	November 22, 1996
69	January 8, 1999
70-74	November 22, 1996
SA1-SA22	May 4, 2001
A1-A2	May 4, 2001
SR1-SR2	May 4, 2001

No Text on This Page

NOVEMBER 22, 1996
(Title Page Reprinted: May 4, 2001)



1

UL 1082

Standard for Household Electric Coffee Makers and Brewing-Type

Appliances

First Edition – December, 1972
Second Edition – July, 1979
Third Edition – August, 1985
Fourth Edition – October, 1991

Fifth Edition

November 22, 1996

The most recent designation of ANSI/UL 1082 as an American National Standard occurred on August 12, 1997.

This ANSI/UL Standard for Safety is under periodic maintenance, whereby the ANSI approval is updated approximately every five years. The fifth edition is ANSI approved; any subsequent revisions are not part of the ANSI designated text. To obtain a copy of the ANSI approved version of the Standard, contact *comm 2000* at www.comm-2000.com.

An effective date included as a note immediately following certain requirements is one established by Underwriters Laboratories Inc. and is not part of the ANSI Standard.

The Department of Defense (DoD) has adopted UL 1082 on February 6, 1976. The publication of revised pages or a new edition of this Standard will not invalidate the DoD adoption.

Revisions of this Standard will be made by issuing revised or additional pages bearing their date of issue. A UL Standard is current only if it incorporates the most recently adopted revisions, all of which are itemized on the transmittal notice that accompanies the latest set of revised requirements.

ISBN 0-7629-0126-8

COPYRIGHT © 1979, 2001 UNDERWRITERS LABORATORIES INC.

No Text on This Page

CONTENTS

FOREWORD	6
----------------	---

INTRODUCTION

1 Scope	7
2 Glossary	7
3 Components	8
4 Units of Measurement	8
5 References	8

CONSTRUCTION

6 General	8A
7 Frame and Enclosure	8A
8 Assembly	16
9 Handles	16
10 Corrosion Protection	16B
11 Supply Connections	16B
11.1 General	16B
11.2 Strain relief	19
11.3 Pin terminals	19
11.4 Bushings	20
12 Current-Carrying Parts	21
13 Internal Wiring	23
13.1 General	23
13.2 Protection of wiring	23
13.3 Splices	23
14 Secondary Circuits	24
14.1 General	24
14.2 Limited-energy-secondary circuits	24
15 Heating Elements	25
16 Electrical Insulation	25
17 Thermal Insulation	26
18 Thermal Cutoffs	26
19 Lampholders	27
20 Switches	27
21 Dual Voltage Appliance	27
22 Limit Controls	27
22.1 General	27
22.2 Terminals of safety devices	28
23 Overheating Protection	28
24 Spacings	28
24.1 General	28
24.2 Barriers	29
25 Grounding	29
26 Protection Against Injury to Persons	29
27 Pressure Vessels and Parts Subject to Pressure	34

PERFORMANCE

28	General	35
29	Resistance of Grounding Test	36
30	Power Input	36
31	Leakage Current Test	36
32	Operational Tests	39
33	Normal Temperature Tests	39
33.1	General	39
33.2	Specific test conditions	47
34	Leakage Current as a Result of Moisture Tests	47
35	Dielectric Voltage-Withstand Test	49
36	Broken Element Test	50
37	Strain Relief Test	51
37A	Push-Back Relief Test	51
38	Metal Enclosure Impact Tests	51
39	Thermal Degradation	54
40	Handle Securement Tests	54
40.1	General	54
40.2	Oven conditioning	54
40.3	Dishwashing	55
40.4	Flexing test	55
40.5	Static load	55
40.6	Static force	55
41	Under-Cabinet and Wall Mounted Appliances-Impact Test	58
42	Loading Test	58
43	Abnormal Operation Tests	58A
43.1	General	58A
43.2	Specific test conditions	60
43.3	Dual voltage appliances	63
44	Secondary Circuit Component Failure Test	63
45	Automatic Controls Test	63
45.1	General	63
45.2	Endurance	64
46	Permanence of Marking Tests	65

MANUFACTURING AND PRODUCTION-LINE TESTS

47	Dielectric Voltage-Withstand Test	65
48	Polarization and Grounding Continuity Tests	67
48.1	Polarization test	67
48.2	Continuity of grounding connection	67
48.3	Electrical indicating device	68

RATINGS

49	Details	68
----	---------	----

MARKINGS

50	Details	68
51	Carton Marking	70

INSTRUCTION MANUAL

52 General	71
53 All Appliances	72
54 Specific Appliances	73
55 User Maintenance	74

SUPPLEMENT SA - HOUSEHOLD ELECTRIC DRIP-TYPE COFFEE MAKERS AND SIMILAR DRIP-TYPE BREWING APPLIANCES

SA1 Scope	SA1
SA2 Assembly	SA1
SA3 Corrosion Protection	SA1
SA4 Supply Connections	SA1
SA5 Gaskets and Seals	SA2
SA6 Water Connections	SA2
SA7 Thermal Conductivity	SA3
SA8 Grounding	SA3
SA9 Operating Controls	SA3
SA10 Power-On Indicator	SA4
SA11 Temperature Controls	SA4
SA11.1 General	SA4
SA11.2 Temperature regulating	SA5
SA11.3 Limiting-type devices	SA5
SA12 Operation Degradation	SA6
SA13 Leakage Current	SA7
SA14 Normal Temperature	SA7
SA15 Leakage Current as a Result of Moisture	SA9
SA16 Stability	SA9
SA17 Loading Test	SA10
SA18 Impact Test	SA10
SA19 Abnormal Operation	SA11
SA19.1 General	SA11
SA19.2 Specific test conditions	SA11
SA19.3 Dry operation	SA11
SA19.4 Overfill	SA12
SA19.5 Restricted water inlet	SA13
SA20 Tests by Manufacturer	SA14
SA20.1 Polarization verification	SA14
SA20.2 Continuity of grounding connection	SA14
SA20.3 Indicator	SA14
SA21 Details	SA15
SA22 Graphical Symbols and Supplemental Marking	SA15
SA22.1 No user-serviceable Parts compartment warning	SA15
SA22.2 Graphical symbol size and color	SA17
SA22.3 Supplemental marking size and color	SA17
SA22.4 Size of outlines and symbols	SA18
SA22.5 Explanation of graphical symbols in the operating instructions	SA18
SA23 Important Safeguards	SA20
SA24 User Maintenance	SA21
Standards for Components	A1

FOREWORD

A. This Standard contains basic requirements for products covered by Underwriters Laboratories Inc. (UL) under its Follow-Up Service for this category within the limitations given below and in the Scope section of this Standard. These requirements are based upon sound engineering principles, research, records of tests and field experience, and an appreciation of the problems of manufacture, installation, and use derived from consultation with and information obtained from manufacturers, users, inspection authorities, and others having specialized experience. They are subject to revision as further experience and investigation may show is necessary or desirable.

B. The observance of the requirements of this Standard by a manufacturer is one of the conditions of the continued coverage of the manufacturer's product.

C. A product which complies with the text of this Standard will not necessarily be judged to comply with the Standard if, when examined and tested, it is found to have other features which impair the level of safety contemplated by these requirements.

D. A product employing materials or having forms of construction which conflict with specific requirements of the Standard cannot be judged to comply with the Standard. A product employing materials or having forms of construction not addressed by this Standard may be examined and tested according to the intent of the requirements and, if found to meet the intent of this Standard, may be judged to comply with the Standard.

E. UL, in performing its functions in accordance with its objectives, does not assume or undertake to discharge any responsibility of the manufacturer or any other party. The opinions and findings of UL represent its professional judgment given with due consideration to the necessary limitations of practical operation and state of the art at the time the Standard is processed. UL shall not be responsible to anyone for the use of or reliance upon this Standard by anyone. UL shall not incur any obligation or liability for damages, including consequential damages, arising out of or in connection with the use, interpretation of, or reliance upon this Standard.

F. Many tests required by the Standards of UL are inherently hazardous and adequate safeguards for personnel and property shall be employed in conducting such tests.

INTRODUCTION

1 Scope

1.1 These requirements cover portable electric coffee makers, percolators, coffee urns, and other brewing-type appliances rated at a nominal 120 V, for use in accordance with the National Electrical Code.

1.2 In addition to coffee makers, this Standard covers tea pots, water kettles, carafes, soup warmers, and other similar appliances in which liquid is heated to greater than 115°F (46°C), and are lifted and tilted to dispense the liquid in normal service.

1.3 These requirements do not cover coffee-making-type appliances with capacities of more than 250 oz (7.4 L), appliances intended for outdoor use, or appliances that are covered in individual requirements that are separate from this Standard.

1.4 In the following text, a requirement that applies to one type of equipment coming within its scope (percolators, and the like) will be so identified by a specific reference in that requirement to the type of equipment involved. In the absence of such specific reference or if the term "appliance" is employed, it is to be understood that the requirement applies to all of the types of equipment covered by the Standard.

1.5 A product that contains features, characteristics, components, materials, or systems new or different from those covered by the requirements in this standard, and that involves a risk of fire or of electric shock or injury to persons shall be evaluated using appropriate additional component and end-product requirements to maintain the level of safety as originally anticipated by the intent of this standard. A product whose features, characteristics, components, materials, or systems conflict with specific requirements or provisions of this standard does not comply with this standard. Revision of requirements shall be proposed and adopted in conformance with the methods employed for development, revision, and implementation of this standard.

1.5 revised May 4, 2001

2 Glossary

2.1 For the purposes of this Standard the following definitions apply.

2.2 **CIRCUIT, LINE-VOLTAGE** – A circuit involving a potential of not more than 120 volts, and having circuit characteristics in excess of those of a low-voltage or an isolated-limited-secondary circuit.

2.3 **CIRCUIT, LOW-VOLTAGE (SECONDARY)** – A circuit involving a potential of not more than 30 volts alternating-current, (42.4 volt peak or direct-current), and supplied by an isolating transformer. A circuit derived from a source of supply classified as a line voltage circuit, using impedance in series with the supply circuit as a means of limiting the voltage and current, is not considered to be a low voltage nor an isolated limited-energy-secondary circuit. See 14.2.1.

3 Components

3.1 Except as indicated in 3.2, a component of a product covered by this Standard shall comply with the requirements for that component. See Appendix A for a list of standards covering components generally used in the products covered by this Standard.

3.2 A component is not required to comply with a specific requirement that:

- a) Involves a feature or characteristic not required in the application of the component in the product covered by this standard, or
- b) Is superseded by a requirement in this standard.

3.2 revised May 4, 2001

3.3 A component shall be used in accordance with its rating established for the intended conditions of use.

3.3 revised May 4, 2001

3.4 Specific components are incomplete in construction features or restricted in performance capabilities. Such components are intended for use only under limited conditions, such as certain temperatures not exceeding specified limits, and shall be used only under those specific conditions.

3.4 revised May 4, 2001

4 Units of Measurement

4.1 Values stated without parentheses are the requirement. Values in parentheses are explanatory or approximate information.

4.1 revised May 4, 2001

4.2 Unless indicated otherwise all voltages and current values mentioned in this Standard are root-mean-square (rms).

5 References

5.1 Any undated reference to a code or standard appearing in the requirements of this standard shall be interpreted as referring to the latest edition of that code or standard.

CONSTRUCTION

6 General

6.1 Only materials that are acceptable for the particular use shall be used in an appliance. An appliance shall be made and finished with the degree of uniformity and grade of workmanship practicable in a well-equipped factory.

7 Frame and Enclosure

7.1 The frame and enclosure of an appliance shall be strong and rigid enough to resist the abuses likely to be encountered during normal service. The degree of resistance inherent in the appliance shall preclude total or partial collapse with the attendant reduction of spacings, loosening or displacement of parts, and other serious defects that alone or in combination constitute an increase in the risk of fire, electric shock, or injury to persons.

7.2 An appliance shall be provided with an enclosure of material acceptable for the particular application, that shall house all electrical parts, except a supply cord, that may present a risk of fire, electric shock or injury to persons under any conditions of use.

No Text on This Page

7.3 Among the factors that shall be considered when an enclosure is being judged for acceptability are its:

- a) Physical strength,
- b) Resistance to impact,
- c) Moisture-absorptive properties,
- d) Combustibility,
- e) Resistance to corrosion, and
- f) Resistance to distortion at temperatures to which the enclosure may be subjected under conditions of normal or abnormal use.

For a nonmetallic enclosure, see the enclosure requirements in the Standard for Polymeric Materials – Use in Electrical Equipment Evaluations, UL 746C. A metal enclosure or enclosure part shall be tested in accordance with Metal-Enclosure Impact Tests, Section 38 for resistance to impact.

Exception No. 1: When considering the abnormal and severe conditions tests of UL 746C, the appliance enclosure is to be judged under the abnormal operation tests of Abnormal Operation Tests, Section 43 of this Standard.

Exception No. 2: Thermoset materials need not be subjected to the relative thermal capability requirements of UL 746C. For a thermoset material operating at a temperature above its temperature rating, the 1000 hour aging test as outlined in 39.1 shall be conducted.

Exception No. 3: An appliance employing a thermoplastic enclosure with a HB flammability rating need not comply with the flammability requirements of UL 746C if it complies with the requirements in Table 7.1.

7.3 revised January 8, 1999

Table 7.1
Flammability requirements for enclosures

Table 7.1 revised January 8, 1999

Flammability rating of enclosure material	Flammability requirements, additional testing, or both
94V-0 V-1 V-2	None
HB	1. 3/4 inch (19 mm) Flame Test (UL 746C, Section 52) or 1. Overheating Protection (Section 23), 2. Minimum 1/2 inch (12.7 mm) spacing from enclosure material (including ribs, grills, and the like) to any uninsulated live parts, 3. HWI – Minimum 7 seconds (PLC-0,1,2,3,4), and 4. HAI – Minimum 60 arcs (PLC-0,1)

7.4 Cast- and sheet-metal portions of the enclosure shall be no thinner than indicated in Table 7.2 unless the enclosure is found to be acceptable when judged under considerations such as are mentioned in 7.3.

7.5 Electrical parts of an appliance shall be so located or enclosed that protection against unintentional contact with uninsulated live parts will be provided.

7.6 For an appliance as mentioned in 43.2.6.4, the enclosure mentioned in 7.5 shall be provided with drainholes located below the lowest live part.

7.7 The enclosure shall be constructed so that molten metal, burning insulation, flaming particles, or the like will not fall on the supporting surface.

7.8 The requirement in 7.7 necessitates that an enclosure bottom with an opening be provided with a barrier above or below the opening if the opening is:

a) Under a motor unless:

1) The structural parts of the motor or of the appliance provide the equivalent of such a barrier,

2) The protection provided with the motor is such that no burning insulation or molten material falls to the surface that supports the appliance when the motor is energized under each of the following fault conditions:

i) Open main winding,

ii) Open starting winding,

iii) Starting switch short-circuited; and

- iv) For a permanent-split-capacitor motor the capacitor is short circuited. The short circuit is to be applied before the motor is energized and the rotor is to be blocked.
- 3) The motor is provided with a thermal motor protector (a protective device that is sensitive to both temperature and current) that prevents the temperature of the motorwindings from becoming more than 125°C (257°F) under the maximum load under which the motor runs without causing the protector to cycle, and from becoming more than 150°C (302°F) with the rotor of the motor locked, or
- 4) The motor complies with the requirements for impedance-protected motors.
- b) Under wiring, unless the wiring complies with the VW-1 (FR-1) flame test or the Vertical Flame Test described in the Reference Standard for Electrical Wires, Cables, and Flexible Cords, UL 1581.
- c) Under an unenclosed switch, transformer, relay solenoid, and the like, unless it can be shown that malfunction of the component is not likely to result in a fire.
- d) Under field- and factory-made splices and overload and overcurrent protective devices.

Exception: A barrier need not be provided if the opening is not within the area under the component requiring a barrier as illustrated by Line D in Figure 7.1.

Table 7.2
Minimum acceptable thicknesses of enclosure metal

Metal	At small, flat, unreinforced surfaces and at surfaces that are reinforced by curving, ribbing and the like (or are otherwise of a shape and/or size) to provide equivalent physical strength		At relatively large unreinforced flat surfaces	
	Inches	Millimeters	Inches	Millimeters
Die-cast	3/64	1.2	5/64	2.0
Cast malleable iron	1/16	1.6	3/32	2.4
Other cast metal	3/32	2.4	1/8	3.2
Uncoated sheet steel	0.026 ^a	0.66 ^a	0.026	0.66
Galvanized sheet steel	0.029 ^a	0.74 ^a	0.029	0.74
Nonferrous sheet metal	0.036 ^a	0.91 ^a	0.036	0.91

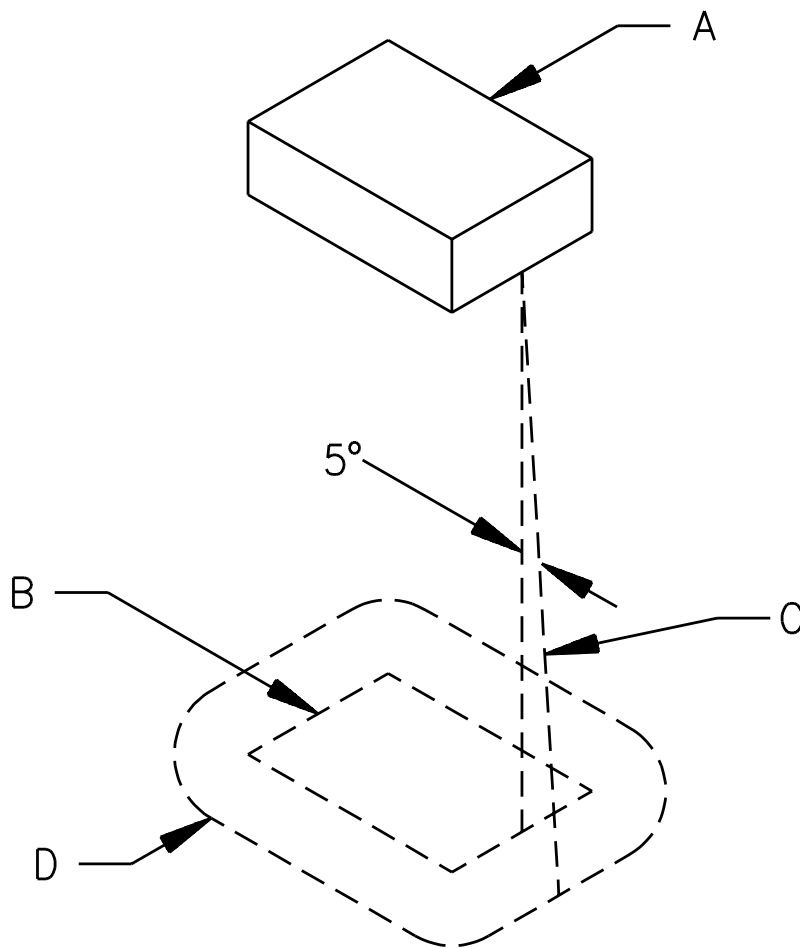
^a Thinner sheet metal may be employed if found to be acceptable when the enclosure is judged under considerations such as those mentioned in 7.3.

7.9 The barrier mentioned in 7.8 shall be:

- a) Of metal, ceramic or a material that would be acceptable as an enclosure in accordance with 7.3,
- b) Horizontal, and
- c) Located as indicated in Figure 7.1, and shall not have an area less than that described in Figure 7.1.

Figure 7.1
Location and extent of barrier

Figure 7.1 revised April 30, 1998



SA0604-1

A – Region to be shielded by barrier. This will consist of the entire component if it is not otherwise shielded and will consist of the unshielded portion of a component that is partially shielded by the component enclosure or equivalent.

B – Projection of outline of component on horizontal plane.

C – Inclined line that traces out minimum area of barrier. The line is always

- 1) tangent to the component,
- 2) 5 degrees from the vertical and
- 3) so oriented that the area traced out on a horizontal plane is maximum.

D – Location (horizontal) and minimum area for barrier. The area is that included inside the line of intersection traced out by the inclined line C and the horizontal plane of the barrier.

7.10 An opening in the enclosure that has a minor dimension of less than 1 inch (25.4 mm) is acceptable if a probe as illustrated in Figure 7.2, inserted through the opening, cannot be made to touch any uninsulated live part of film-coated wire that involves the risk of electric shock. The probe shall be applied in all possible articulated positions before, during, and after insertion.

7.11 An opening that has a minor dimension of 1 inch (25.4 mm) or more, in an enclosure, as illustrated in Figure 7.3, is acceptable if, within the enclosure, there is no uninsulated live part or film-coated wire less than;

- a) R distance from the inside edge of the perimeter of the opening and
- b) X distance from the plane of the opening.

T equals the enclosure thickness, R equals X minus T, and X equals 5 times the diameter of the largest round rod that can be inserted through the opening but not less than 6-1/16 inches (154 mm). In evaluating an opening, any barrier located within the volume is to be ignored unless it intersects the boundaries of the volume in a continuous, closed line.

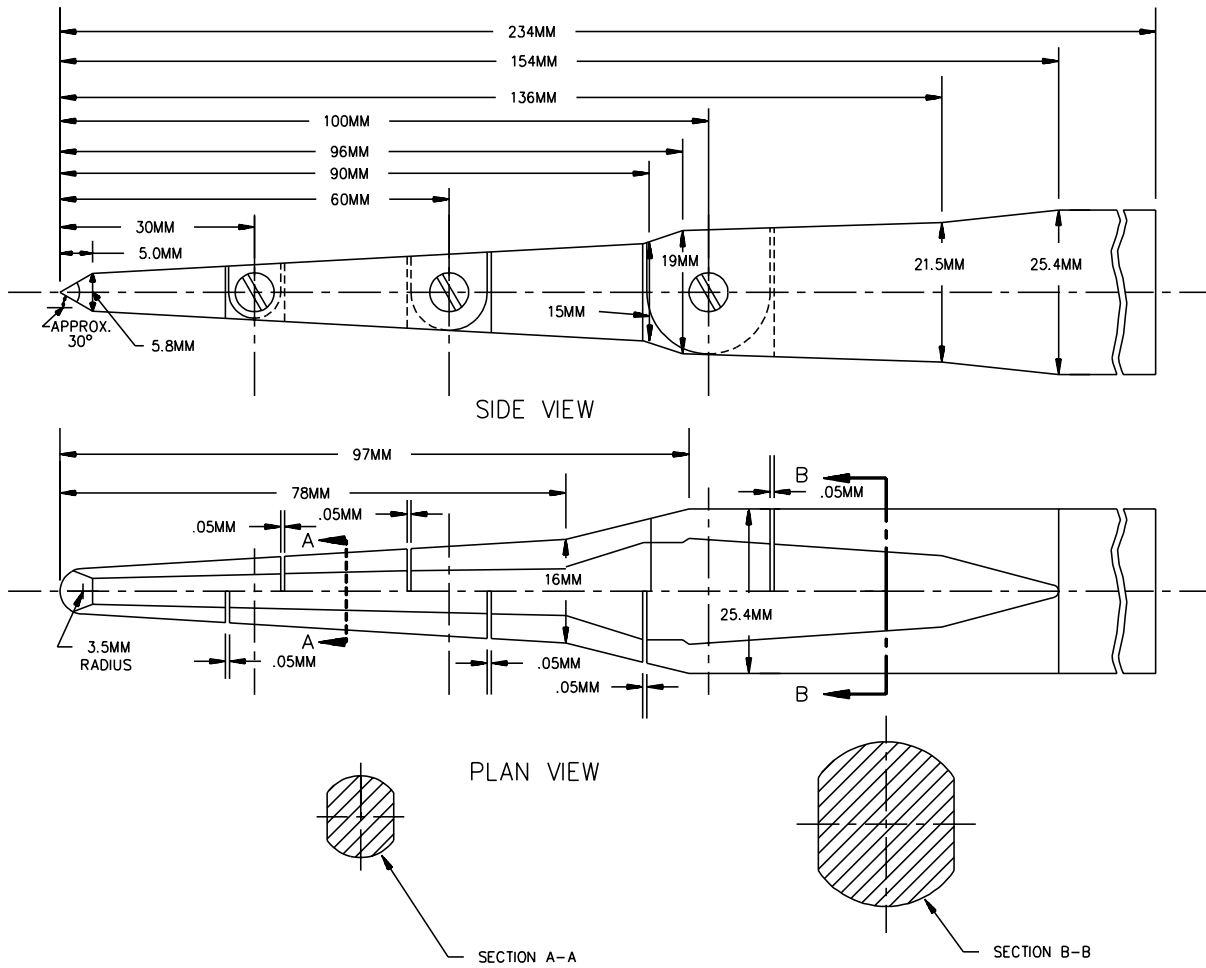
7.12 If a marking draws attention of the user to a hole of any size in the enclosure for the adjustment of a thermostat or for a similar activity, it shall not be possible to damage insulation or contact uninsulated live parts through the hole with a 1/16-inch-diameter rod (1.6 mm).

7.13 During the examination of an appliance in connection with the requirements in 8.2 – 8.4, any part of the enclosure is to be disregarded – that is, it will not be assumed that the part in question affords protection against electric shock or injury to persons– if it either:

- a) Must be opened or removed, with or without the use of tools, to perform manufacturer's recommended user servicing, maintenance, operating adjustments, attachment of accessories, or other instructions, or
- b) Can be opened or removed without the use of tools.

Exception: A part that requires a tool for opening or removal to perform manufacturer's recommended user servicing, maintenance, operating adjustments, attachment of accessories, or other instructions is to remain in place if the appliance is marked in accordance with 50.6.

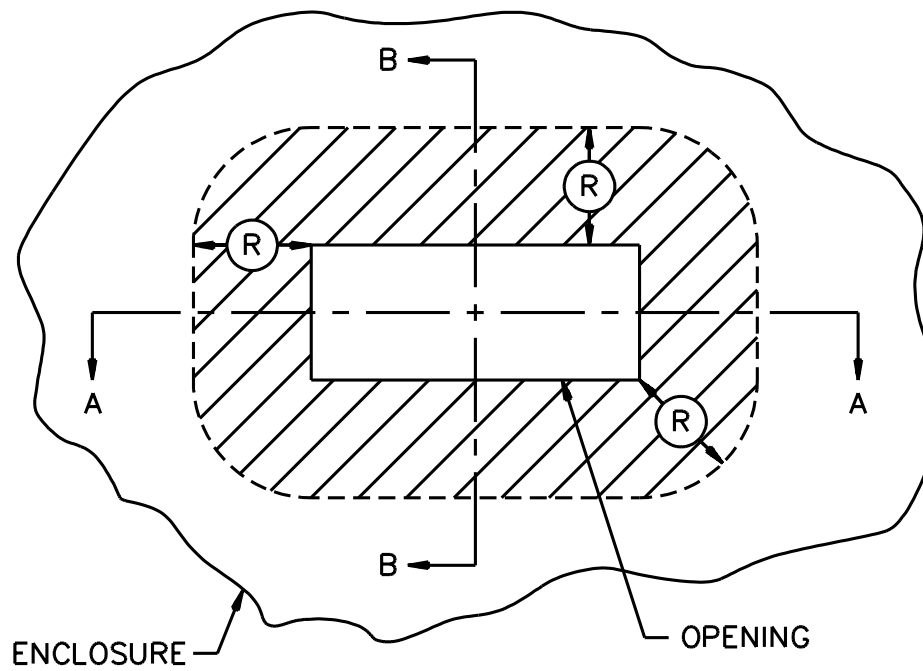
Figure 7.2
Accessibility probe



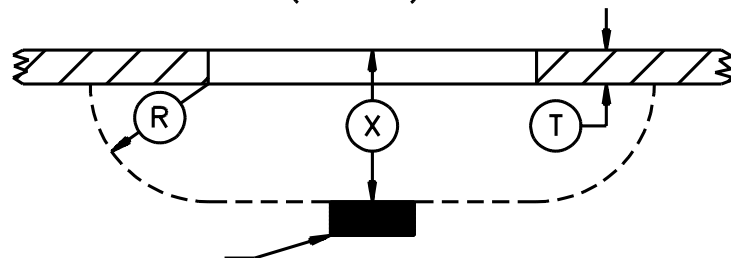
PA100

Figure 7.3
Opening in enclosure

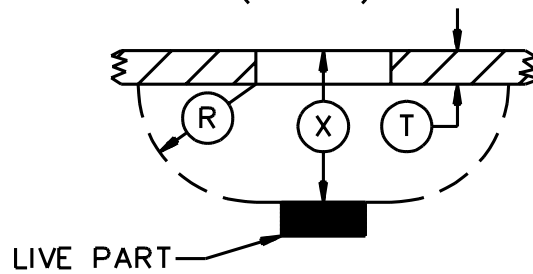
Figure 7.3 revised April 30, 1998



SECTION A-A
($X=R+T$)



SECTION B-B
($X=R+T$)



SB0610-1

7.14 A component of an appliance that is likely to need inspection, replacement, cleaning, or other servicing shall be as accessible as possible. The component shall be readily accessible without the use of special tools (tools not available to other than service personnel) if it is intended to be manually operated or adjusted or periodically serviced.

7.15 The bulb and capillary tube of a thermostat shall be protected from mechanical damage if damage of the tube or bulb would increase the risk of fire.

8 Assembly

8.1 A switch, lampholder, or plug-type connector provided as a part of an appliance shall be mounted securely and prevented from turning by means other than friction between surfaces.

8.2 A lock washer properly applied is acceptable as a means to prevent turning of a stem-mounted switch.

8.3 Uninsulated live parts shall be so secured to the base or surface that they will be prevented from turning or shifting in position as the result of stresses if such motion may result in a reduction of spacings below the minimum required in 24.1.1 and 24.1.2.

8.4 Friction between surfaces is not acceptable as a means to prevent shifting or turning of live parts, but a lock washer properly applied is acceptable.

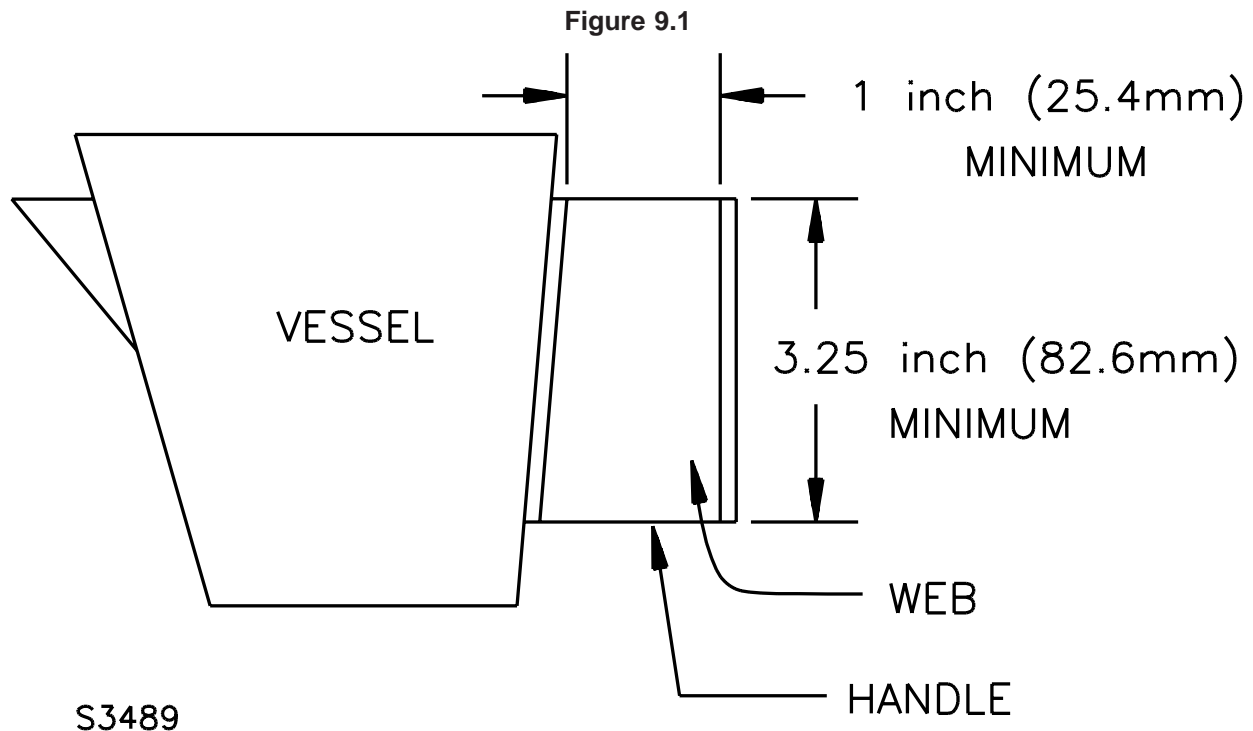
9 Handles

9.1 Unless determined to be acceptable for the purpose, fastening of the vessel handle assembly of an appliance shall not rely on cement or equivalent materials alone. Mechanical means, such as pressure clamping, bosses and lances, and the like, shall be provided.

9.2 A handle assembly that is utilized to lift and tilt a vessel, which is either integral to the appliance or a separate unit, to dispense a heated liquid shall comply with the requirements in 9.3 – 9.7, and Normal Temperature Tests, Section 33, and Handle Securement Tests, Section 40. The handle assembly of an integrally heated vessel shall also comply with 43.2.3.6.

Exception: A carafe type vessel having a capacity of less than 17.5 oz and provided with a product not employing a keep warm feature for the vessel.

9.3 For an appliance or separate vessel that is provided with a webbed handle – that is a solid handle that cannot be grasped by wrapping the fingers around it – the web shall be a minimum of 1 inch in width and 3.25 inches in length. See Figure 9.1.



9.4 No portion of a nonmetallic handle whose failure could result in the loss of handle strength or integrity is to be subjected to a temperature in excess of the mechanical temperature index (without impact) of the material when tested as indicated in Normal Temperature Tests, Section 33.

9.5 On a vessel where handle securement is accomplished by a band around the body of the vessel, the diameter of the vessel above and below the band securement area shall be larger than the diameter at the area of securement. A handle shall be fastened so that a positive stop, interference screw, rivet, or other arrangement is provided so that with minor loosening, disengagement of the handle from the vessel will not result.

Exception: The diameter of the vessel above and below the band securement need not be larger than the diameter at the area of securement if an equivalent means of preventing movement of the handle assembly is provided.

9.6 Iron and steel parts of a handle assembly shall be provided with corrosion protection in accordance with 10.1 or shall be constructed of stainless steel or other noncorrosive metal acceptable for the application.

9.7 A handle secured by a single fastening means shall be prevented from rotating by means other than friction. A lockwasher alone shall not be sufficient.

10 Corrosion Protection

10.1 Iron and steel parts shall be protected against corrosion by enameling, galvanizing, plating, or other equivalent means, if the deterioration of such unprotected parts would increase the risk of fire or electric shock.

Exception: Where the oxidation of steel is not likely to be accelerated due to the exposure of metal to air and moisture or other oxidizing influence— thickness of metal and temperature also being factors – surfaces of sheet steel within an enclosure may not be required to be protected against corrosion. Cast-iron parts are not required to be protected against corrosion. A sheath employed on a heating element operating in air and terminal parts attached directly to the heating element need not be protected against corrosion.

10.2 The aging characteristics of plating or other finish used in an appliance shall be such that deterioration of the finish will not result eventually in unacceptable performance of the appliance.

11 Supply Connections

11.1 General

11.1.1 An appliance shall be provided with a length of attached flexible cord and an attachment plug for connection to the supply circuit, or shall have male pin terminals that accommodate a detachable power-supply cord. The length of flexible cord shall be within the limits indicated in Table 11.1.

Table 11.1
Lengths of cord connection

Means of dispensing liquid	Kind of cord connection	Minimum acceptable length ^a		Maximum acceptable length ^{a,c}	
		Feet	Meters	Feet	Meters
Lifting and tilting appliance	Attached cord or detachable power-supply cord	2.0	0.6	3.0	0.9
	Coiled (retractile) detachable power-supply cord	—	—	3.0 ^b	0.9 ^b
Separable vessel, spigot or the like	Attached cord or detachable power-supply cord	2.0	0.6	7.0	2.1
^a Measured external to the appliance and including the fittings but excluding the blades on the attachment plug. ^b Measured with the cord relaxed on a horizontal surface. Measured with the cord fully extended, the length is not to exceed 7.0 ft (2.1 m) and is not to be less than 6.0 ft (1.8 m). ^c An appliance shall be provided with instructions in accordance with 50.7 or 50.8, whichever is applicable.					

11.1.2 The rating (both current and voltage) of the cord and the fittings of a nondetachable and a detachable power-supply cord, shall not be less than that of the appliance.

11.1.3 A 3- to 2-wire grounding-type adapter shall not be provided with an appliance.

11.1.4 An attached flexible cord and the cord in a detachable power-supply cord that is provided with an appliance shall be of a Type HPD, HPN, HSJ, HSJO, SP-2, SPE-2, SPT-2, SV, SVE, SVO, SVT, SVTO, SJ, SJE, SJO, SJT, or SJTO cord, or shall have such properties that will be at least equally as serviceable for the particular application.

11.1.5 Supplementary insulation, if employed, shall not extend more than 1/2 inch (13 mm) outside the appliance (unless provided with additional mechanical protection), shall be prevented from fraying or unraveling, and shall not affect adversely the means for providing strain relief.

11.1.6 The attachment plug of the power supply cord of an appliance provided with a 15- or 20- ampere general use receptacle shall be of the 3-wire grounding type. The attachment plug of the power supply cord of an appliance provided with:

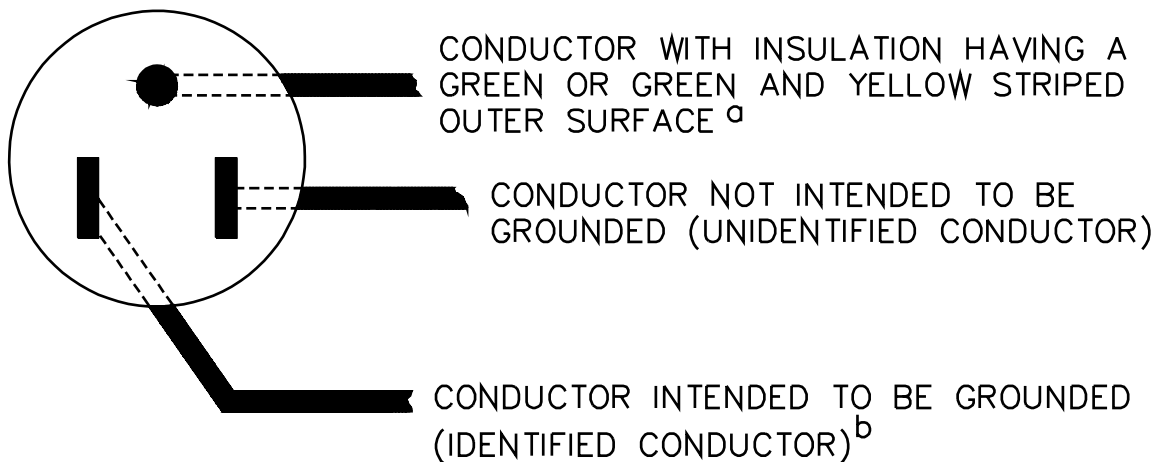
- a) A manually operated, line-connected, single pole switch for appliance on-off operation or
- b) An Edison-base lampholder shall be of the polarized or grounding type.

11.1.7 If a 3-wire grounding-type attachment plug or a 2-wire polarized attachment plug is provided, the attachment plug connection shall comply with Figure 11.1 and the polarity identification of the flexible cord shall comply with Table 11.3.

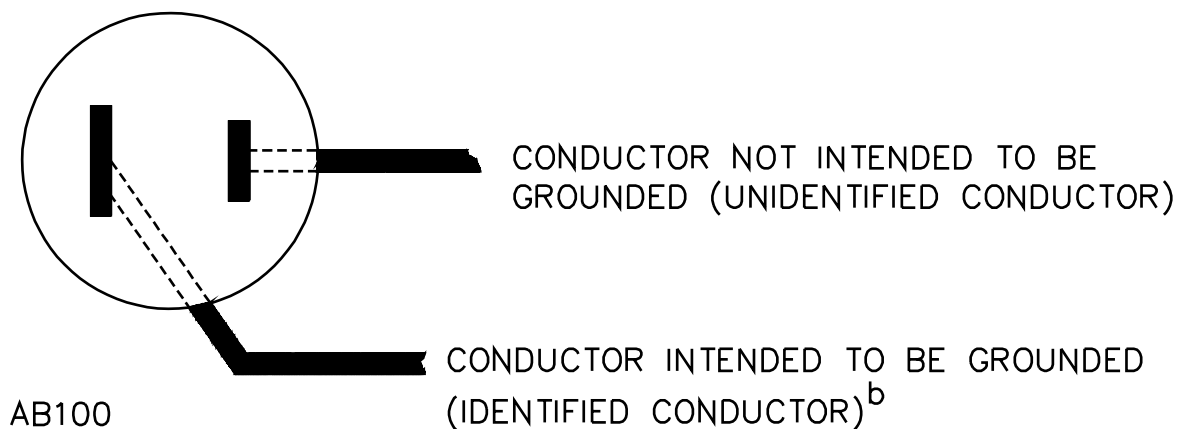
Figure 11.1
Connections to attachment plug

Figure 11.1 revised April 30, 1998

CONNECTIONS OF CORD CONDUCTORS TO GROUNDING – TYPE
ATTACHMENT PLUG (FACE OF PLUG REPRESENTED)



CONNECTIONS OF CORD CONDUCTORS TO POLARIZED
ATTACHMENT PLUG (FACE OF PLUG REPRESENTED)



^a In the above illustration, the blade to which the green conductor is connected may have a U-shaped or circular cross section.

^b Signifies a conductor identified in accordance with Table 11.3.

11.1.8 The conductor of the power supply cord that is intended to be grounded shall have the following items connected to it:

- a) The screw shell of an Edison-base lampholder and
- b) The terminal or lead of a receptacle intended to be grounded.

Table 11.3 identifies the supply cord conductor intended to be grounded.

11.2 Strain relief

11.2.1 Strain relief shall be provided to reduce the risk of a mechanical stress on an attached flexible supply cord from being transmitted to terminals, splices, or interior wiring.

11.2.2 If wood, pressed board, or other fibrous material is used to secure the strain-relief assembly, the fibrous material shall be secured to the appliance by a pin, setscrew, or other positive means.

11.2.3 Means shall be provided to reduce the likelihood of an attached supply cord or lead from being pushed into the enclosure of an appliance through the cord-entry hole. To determine compliance with this requirement, the supply cord or lead shall be tested in accordance with Push-Back Relief Test, Section 37A.

11.2.3 revised January 8, 1999

11.2.4 If a knot serves as strain relief in an attached flexible cord, any surface with which the knot may come in contact shall be free from projections, sharp edges, burrs, fins, and the like, which may cause abrasion of the insulation on the conductors.

11.3 Pin terminals

11.3.1 If an appliance is provided with pin terminals, the design of the appliance shall be such that no live parts will be exposed to unintentional contact both during and after the placement of the plug on the pins, in the intended manner.

11.3.2 A pin guard is required, such that:

- a) A straight edge placed in any position, across and in contact with edges of the plug opening without the plug in place, cannot be made to contact any current-carrying pin.
- b) With the plug aligned with the pins and the face of the plug in a plane located perpendicular to the end or ends of the farthest projecting current-carrying pin, the probe illustrated in Figure 7.2 should not touch any current-carrying pin while the probe is inserted through any opening with the appliance in any position.

11.3.3 The plug used in 11.3.2 (b) is to be the plug intended for use with the appliance.

11.3.4 If an appliance employs three or more pin terminals designed for use with a plug that covers all the pins, the terminals shall be so spaced that they will not accommodate a flatiron or appliance plug or cord-connector body. The plug which these pins will accommodate shall be acceptable for the particular application.

11.3.5 An appliance provided with three pin terminals, one of which is for grounding, shall not be provided with or capable of being used with a two-conductor detachable power-supply cord.

11.3.6 An appliance provided with two pin terminals shall not be provided with or capable of being used with a three-conductor detachable power-supply cord employing a grounding conductor.

11.3.7 A pin terminal shall be securely and rigidly mounted and shall be prevented from shifting in position by means other than friction between surfaces.

11.3.8 The requirement in 11.3.7 is intended primarily to provide for the maintenance of spacings as given in 24.1.1 and to provide for the maintenance of proper spacings between pin terminals. Under this requirement, consideration is also to be given to the means for locking terminals in position to maintain tightness.

11.3.9 The dimensions of pins and their center-to-center spacings (including the corresponding spacings of the female contacts of general-use plugs which these arrangements of pins will accommodate) are as indicated in Table 11.2.

Table 11.2
Pins

Type and rating of plug that accommodates the pins	Configuration of pins			Dimensions of pins	
	Number	Agreement	Spacing between centers, inch (mm)	Diameter, inch (mm)	Length, inch (mm)
Appliance plug rated 10 A at 125 V	2	In line	1/2 (12.7)	0.156 ±0.005 (3.97 ±0.13)	9/16 – 5/8 (14.3 – 15.9)
Flatiron plug rated 10 A at 125 V	2	In line	11/16 (17.5)	0.188 ±0.005 (4.76 ±0.13)	3/4 – 7/8 (19.1 – 22.2)

11.4 Bushings

11.4.1 At a point where a flexible cord passes through an opening in a wall, barrier, or enclosing case, there shall be a bushing or the equivalent which shall be substantial, reliably secured in place, and shall have a smooth, well-rounded surface against which the cord may bear. If Type SP-2, SPT-2, or other cord lighter than Type HSJ is employed, if the wall or barrier is of metal, and if the construction is such that the cord may be subjected to strain or motion, an insulating bushing shall be provided. The heat- and moisture-resistant properties of the bushing material shall be such that the bushing is acceptable for the particular application.

11.4.2 If the cord hole is in wood, porcelain, phenolic composition, or other acceptable nonconducting material, a smooth, well-rounded surface is considered to be equivalent to a bushing.

11.4.3 Ceramic materials and some molded compositions are acceptable generally for insulating bushings, but a separate bushing of wood, hot-molded shellac and tar composition, or rubber material (other than in a motor) is not acceptable. Vulcanized fiber may be employed if the bushing is not less than 3/64 inch (1.2 mm) thick and if it is so formed and secured in place that it will not be affected adversely by conditions of ordinary moisture.

11.4.4 An insulated metal grommet may be accepted in place of an insulating bushing if the insulating material used is not less than 1/32 inch thick (0.8 mm), and completely fills the space between the grommet and the metal in which it is mounted.

Table 11.3
Polarity identification of flexible cords

Method of identification	Acceptable combinations		
	Wire intended to be grounded ^d		All other wires ^d
Color of braids on individual conductors	A	Solid white or natural gray – without tracer	Solid color other than white or natural gray – without tracer
	B	Color other than white or natural gray, with tracer in bold	Solid color other than white or natural gray – without tracer
Color of insulation on individual conductors	C ^a	Solid white or natural gray	Solid color other than white or natural gray
	C1 ^e	Light blue	Solid color other than light blue, white, or natural gray
Color of separators	D ^b	White or natural gray	Color other than white or natural gray
Other means	E ^c	Tin or other white metal on all strands of the conductor	No tin or other white metal on the strands of the conductor
	F ^b	A stripe, ridge, or groove on the exterior surface of the cord	

^a Only for cords – other than Type SP-1, and SPT.1 – having no braid on any individual conductor.

^b Only for Types SP-1, SP-2, and SPT-2 cords.

^c Only for Type SPT-1 and SPT-2 cords.

^d A wire finished to show a green color with or without one or more yellow stripes or tracers is to be used only as an equipment grounding conductor. See 25.1 and Figure 11.1.

^e For jacketed cord.

12 Current-Carrying Parts

12.1 Each current-carrying part shall be made of metal that is acceptable for the particular application.

12.2 Current-carrying parts made of corrosion-resistant alloys (for example, stainless steel) are acceptable regardless of temperature. Current-carrying parts made of ordinary iron and steel are not acceptable unless they are rendered corrosion-resistant by an appropriate coating and, even then, they are acceptable only as follows:

- a) Pin terminals.
- b) Parts whose normal operating temperature is higher than 100°C (212°F).
- c) Parts of a component that the requirements referred to in 3.1 indicate as being acceptable with coated iron and steel parts.

No Text on This Page

12.3 If a reservoir is part of an appliance, all live parts shall be so located or protected that they will not be subject to dripping if the reservoir develops leaks, unless:

- a) The reservoir is adequately resistant to corrosion from the liquid intended for use in it, and
- b) The reservoir does not develop cracks as a result of aging.

13 Internal Wiring

13.1 General

13.1.1 The internal wiring of an appliance shall consist of wire of a size and type or types which are acceptable for the particular application, when considered with respect to the temperature and voltage to which the wiring is likely to be subjected.

13.1.2 There is no temperature limit applicable to glass fiber, beads of inorganic material, or the equivalent employed as conductor insulation.

13.1.2 revised January 8, 1999

13.1.3 Thermoplastic-insulated wire employed for the internal wiring of an appliance shall be fixture wire, or appliance-wiring material acceptable for the particular application.

13.1.3 revised January 8, 1999

13.2 Protection of wiring

13.2.1 If the wiring of an appliance is so located that it may be in proximity to combustible material or may be subjected to mechanical injury, it shall be protected.

13.2.2 Wires within an enclosure or the like shall be so disposed or protected that no damage to conductor insulation can result from contact with any rough, sharp, or moving part.

13.2.3 A hole by means of which insulated wires pass through a sheet-metal wall within the over-all enclosure of an appliance shall be provided with a smooth, well-rounded bushing or shall have smooth, well-rounded surfaces upon which the wires may bear, to prevent abrasion of the insulation.

13.2.4 Insulated wires may be bunched and passed through a single opening in a metal wall within the enclosure of an appliance.

13.3 Splices

13.3.1 All splices and connections shall be mechanically secure and shall provide adequate and reliable electrical contact. A soldered connection shall be made mechanically secure before being soldered if breaking or loosening of the connection may result in any risk of fire or electric shock.

13.3.2 A splice shall be provided with insulation equivalent to that of the wires involved if permanence of spacing between the splice and other metal parts of the appliance is not reliably maintained.

13.3.3 Insulation consisting of two layers of friction tape, two layers of thermoplastic tape, or of one layer of friction tape on top of one layer of rubber tape, is acceptable on a splice. In determining whether splice insulation consisting of coated fabric, thermoplastic, or other type of tubing is acceptable, consideration is to be given to such factors as its dielectric properties, heat resistant and moisture-resistant characteristics. Thermoplastic tape wrapped over a sharp edge is not acceptable.

13.3.4 Where stranded internal wiring is connected to a wire-binding screw, loose strands of wire shall be positively prevented from contacting any other uninsulated live part that is not always of the same polarity as the wire, and from contacting any dead metal part. This may be accomplished by the use of pressure terminal connectors, soldering lugs, crimped eyelets, soldering all strands of the wire together, or other equivalent means.

14 Secondary Circuits

14.1 General

14.1.1 Each secondary circuit shall be judged under the requirements for line-voltage circuits.

Exception: A secondary circuit need not be investigated if:

- a) It is not a circuit that is intended to reduce the risk of injury to persons, and*
- b) It complies with the requirements for a limited-energy-secondary circuit as described in 14.2.1 – 14.2.9.*

14.1.2 Secondary circuits may be connected to the frame of the appliance. Except as noted in 14.1.3 and 14.2.6, the connection shall be made at only one point in the appliance or system.

14.1.3 A grounding bus of adequate ampacity that is used as the return for a secondary circuit other than as covered by 14.2.6 may be connected to the frame at more than one point.

14.1.4 If any secondary circuit having an open-circuit potential of more than 42.4 volts peak is connected to the frame of an appliance, all exposed dead metal parts that may become energized, and all dead metal parts within the enclosure that can be contacted during servicing and that may become energized, shall be reliably connected together.

14.2 Limited-energy-secondary circuits

14.2.1 A limited-energy-secondary circuit shall be supplied from:

- a) A Class 2 transformer, or
- b) An isolating transformer having an open-circuit sinusoidal potential of 30 volts, rms (42.4 volts, peak) or less, and that includes at least one of the following means, that limits the power available to the levels specified for a Class 2 transformer.
 - 1) A reliable fixed impedance;
 - 2) A noninterchangeable fuse – the largest fuse that fits in the fuseholder provided;
 - 3) A nonadjustable manually reset circuit protector; or
 - 4) A reliable regulating network.

14.2.2 The impedance, the fuse, the protector, or the regulating network and the wiring between them and the isolating transformer described in 14.2.1 shall be judged as if they were part of a line-voltage circuit.

14.2.3 A fuse or a circuit protector used to limit the power as specified in 14.2.1 shall be rated or set at not more than 3.2 amperes for a circuit operating between 15 and 30 volts and at not more than 5.0 amperes for a 0 – 15 volt circuit.

14.2.4 An impedance or a regulating network that is used to limit the current shall be of such value or design as to limit the current under short-circuit conditions to not more than 8.0 amperes measured after 1 minute.

14.2.5 The performance of a regulating network used to limit the power in accordance with 14.2.1 shall not be adversely affected by either a short circuit or an open circuit between any two terminals of any single rectifier, capacitor, transistor, or similar component in the network.

14.2.6 The frame may be used as the return for a limited-energy-secondary circuit.

14.2.7 The wiring in a limited-energy-secondary circuit shall be routed away from the wiring of other circuits or shall be provided with insulation that is for use at the highest of the voltages in the other circuits.

14.2.8 The wiring in a limited-energy-secondary circuit shall be routed away from the uninsulated live components of other circuits.

14.2.9 Wires and cables that are part of a limited-energy-secondary circuit shall be provided with strain relief in accordance with 37.1 and 37.2 if stress on the wire or cable could cause the internal wiring of the circuits to contact uninsulated live parts of other circuits.

15 Heating Elements

15.1 A heating element shall be supported in a sturdy and reliable manner. It shall be protected against mechanical damage and contact with outside objects.

15.2 In determining that a heating element is adequately supported, consideration is to be given to sagging, loosening, and other adverse conditions of the element resulting from continuous heating. For an open-wire (uninsulated resistance wire) heating element consideration is also to be given to breakage at any point.

15.3 An open-wire element, that is, uninsulated resistance wire, may be used in an appliance provided it is enclosed or protected by barriers or covers that require tools for removal, and it complies with the accessibility of live parts requirements outlined in 7.5 – 7.13 and the broken element test of Broken Element Test, Section 36.

15.4 A sheathed heating element, rope heater, or the like shall be judged under the applicable requirements of this Standard.

16 Electrical Insulation

16.1 Insulating washers, bushings, and the like that are integral parts of an appliance and bases or supports for the mounting of current-carrying parts shall be of a moisture-resistant material that will not be damaged by the temperatures to which they will be subjected under conditions of actual use. Molded parts shall be so constructed that they will have the mechanical strength and rigidity necessary to withstand the stresses of actual service.

16.2 Insulating material employed in an appliance shall be judged with respect to its acceptability for the particular application. Materials such as mica, some molded compounds, and certain refractory materials are usually acceptable for use as the direct support of live parts. Other materials which are not acceptable for general use, such as magnesium oxide, may be acceptable if used in conjunction with other more appropriate insulating materials or if located and protected against mechanical damage and the absorption of moisture is minimized. When it is necessary to investigate a material to determine whether it is acceptable, consideration is to be given to its mechanical strength, dielectric properties, insulation resistance, heat-resistant qualities, the degree to which it is enclosed or protected, and any other features having a bearing on the risk of fire, electric shock, or injury to persons involved, in conjunction with conditions of actual service. All of these factors are considered with respect to thermal aging. The appropriate tests in the Standard for Polymeric Materials – Use in Electrical Equipment Evaluations, UL 746C, see Temperature Considerations – General, Section 33, Functional-Use Temperature Indices, Section 34, and Generic Thermal Indices, Section 35, are to be used to evaluate a material for the above-mentioned properties.

Exception: Thermoset materials need not be subject to the relative thermal capability requirements of UL 746C. For a thermoset material operating at a temperature above its temperature rating, the 1000 Hour Aging Test as outlined in 39.1 shall be conducted.

16.3 In the mounting or supporting of small fragile insulating parts, screws or other fastenings should not be tight enough to cause cracking or breaking of these parts with expansion and contraction. Generally, such parts should be slightly loose.

16.4 Sleeving or tubing used as an insulator for uninsulated live parts (such as glass fiber in rope heaters) shall be so disposed or protected that no damage to the sleeving or tubing can result from contact with any rough, sharp, or moving part. The sleeving or tubing shall not be installed under a compression that renders it incapable of complying with the dielectric voltage-withstand requirements in 35.1.

17 Thermal Insulation

17.1 Thermal insulation, if employed, shall be of such a nature and so located and mounted or supported that it will not be adversely affected by any normal operation of the appliance.

17.2 Combustible or electrically conductive thermal insulation shall not make contact with uninsulated live parts of an appliance.

17.3 Some types of mineral-wool thermal insulation contain conductive impurities in the form of slag, which make its use unacceptable if in contact with uninsulated live parts. See 34.1.

18 Thermal Cutoffs

18.1 If an appliance is provided with a thermal cutoff, it shall be secured in place and shall be so located that it will be accessible for replacement without damaging other connections or internal wiring. See 50.6.

18.2 If an appliance is provided with a thermal cutoff, it shall be capable of opening the circuit in the intended manner without causing the short-circuiting of live parts and without causing live parts to become grounded to the enclosure when the appliance is connected to a circuit of voltage in accordance with 33.1.11, and operated in a normal position to cause abnormal heating.

18.3 To determine whether or not a thermal cutoff complies with the requirement in 18.2 the appliance is to be operated with separate cutoffs five times as described in 18.2 while any other thermally operated control devices in the appliance are short-circuited. Each cutoff is required to perform acceptably. During the test, the enclosure is to be connected through a 3-A fuse to a supply conductor not containing the thermal cutoff.

19 Lampholders

19.1 If an appliance is equipped with a polarized attachment plug, a lampholder supplied as a part of the appliance shall be so wired that the screw shell is connected to the grounded conductor.

19.2 A lampholder shall be so constructed and installed that uninsulated live parts other than the screw shell will not be exposed to contact by persons removing or replacing lamps in normal service.

Exception: The requirement does not apply if, in order to remove or replace a lamp, it is necessary to dismantle the appliance by means of tools.

20 Switches

20.1 A switch or other control device provided as a part of an appliance shall be of a type intended for the particular application and shall have a current and voltage rating not less than that of the circuit (load) which it controls.

20.2 A switch employed on an appliance shall be so located or protected that it will not be subjected to mechanical damage during use.

20.3 A manually operated, line-connected, single pole switch for appliance on-off operation shall not be connected to the conductor of the power supply cord intended to be grounded. Table 11.3 specifies the identification of the power-supply cord conductor intended to be grounded.

21 Dual Voltage Appliance

21.1 The construction of the circuit voltage selector shall be such that the circuit voltage setting cannot be changed inadvertently.

21.2 If the appliance is so constructed that the supply circuit voltage selector can be changed, the action of changing the voltage selector setting shall also change the supply circuit voltage indication.

21.3 An appliance that can be set to different rated supply circuit voltages shall be provided with the statement required by 54.5.

22 Limit Controls

22.1 General

22.1.1 A safety or temperature-limiting control constructed to reduce the risk of fire or electric shock shall be operative whenever the appliance is connected to its power supply.

22.1.2 A control device shall not be constructed to deliberately overload the branch-circuit protective device as a means of disconnecting the appliance from the supply.

22.2 Terminals of safety devices

22.2.1 The terminals of a safety device within the enclosure of an appliance shall be so located or further enclosed that they will be protected against unintentional short-circuiting and damage.

23 Overheating Protection

23.1 A separate temperature limiting-type device shall be provided for products requiring overheating protection as indicated in Table 7.1 only if the short-circuiting of a temperature-regulating control during abnormal operation (see Abnormal Operation Tests, Section 43) increases the risk of fire or electric shock. A single combination regulating-limiting control is unacceptable for this purpose.

23.2 A limiting-type device shall be a thermal cutoff, a single-operation thermostat or a manual-reset thermostat that is inaccessible to the user without the use of tools.

23.3 A single-operation thermostat or a manual-reset thermostat that is provided as the thermal limiting device shall comply with the applicable requirements in the Standard for Temperature-Indicating and Regulating Equipment, UL 873 for limiting controls.

23.4 A thermal cutoff shall comply with the applicable requirements in the Standard for Thermal Cutoffs for Use in Electrical Appliances and Components, UL 1020.

23.5 If a grounding-type attachment plug is provided or the enclosure of the appliance has metal parts that are likely to become grounded, such as a metal bottom with bumped-out metal feet, the limiting-type device shall be located in one supply conductor and the temperature-regulating control shall be located in the other supply conductor. If identifiable, the ungrounded supply conductor shall contain the limiting-type device.

24 Spacings

24.1 General

24.1.1 The spacings in an appliance shall be 1/16 inch (1.6 mm) between uninsulated live parts of opposite polarity; and between a rigidly mounted uninsulated live part and a dead metal part that either is exposed for persons to contact or may be grounded.

Exception No. 1: If exact centering of the cold pin of a sheathed-type heating element is required to maintain the 1/16-inch (1.6-mm) spacing, a spacing of 3/64 inch (1.2 mm) in one location is acceptable.

Exception No. 2: As indicated in 24.1.2.

24.1.2 At closed-in points only, such as the screw-and-washer construction of an insulated terminal mounted in metal, a spacing of 3/64 inch (1.2 mm) is acceptable. Within a thermostat, except at contacts, the spacings between uninsulated live parts on opposite sides of the contacts are to be not less than 1/32 inch (0.8 mm) through air and 3/64 inch (1.2 mm) over the surface of insulating material, and the construction is to be such that the spacings will be maintained permanently.

24.2 Barriers

24.2.1 An insulating liner or barrier of fiber or similar material employed where spacings would otherwise be unacceptable shall not be less than 1/32 inch (0.8 mm) thick and shall be so located or of such material that it cannot be adversely affected by arcing, except that fiber not less than 1/64 inch (0.4 mm) thick may be used in conjunction with an air spacing of not less than 50 percent of the spacing required for air alone.

Exception: Insulating material having a thickness less than specified may be used if it is equivalent in appropriate properties for the application.

24.2.2 Unless protected from mechanical abuse during assembly and functioning of an appliance, a barrier of mica shall be 0.010 inch (0.25 mm) or thicker.

25 Grounding

25.1 On an appliance where grounding is provided, the flexible cord shall include a grounding conductor that shall be:

- a) Green with or without one or more yellow stripes,
- b) Connected to the grounding blade of an attachment plug of a grounding type, and
- c) Connected to the enclosure of the appliance by means of a screw not likely to be removed during ordinary servicing, or by other reliable means. Solder alone is not acceptable for making this connection.

25.2 All exposed dead metal parts of a cord-connected appliance that is equipped with a grounding conductor, and all dead metal parts within the enclosure that are exposed to contact during any user servicing and are likely to become energized, shall be conductively connected to the grounding conductor of the power-supply cord. The grounding means shall comply with the requirements in Resistance of Grounding Test, Section 29.

25.3 A separable connecting device provided with a grounding connection shall be such that the appliance grounding connection is made before connection to, and broken after disconnection from the supply circuit.

Exception: An interlocked plug, receptacle, and connector that is not energized when the appliance grounding connection is made.

26 Protection Against Injury to Persons

26.1 Materials employed in the construction of the appliance depended upon for protection against personal injury shall be appropriate for the particular use. See 7.1 and 7.3.

26.2 An enclosure, a frame, a guard, a handle, or the like shall not be sharp enough to constitute a risk of injury to persons during normal maintenance and use.

Exception No. 1: A part or portion of a part needed to perform a working function need not comply with this requirement.

Exception No. 2: A part or portion of a inaccessible to the probe illustrated in Figure 7.2 need not comply with this requirement.

26.3 Compliance with the requirement of 26.2 is determined by applying the test procedures, equipment, and acceptance criteria described in the requirements for tests for sharpness of edges on equipment, UL 1439.

26.4 The stability of an appliance shall be such that it will not be overturned readily in normal use.

26.5 The appliance shall be placed on a plane inclined at an angle of 15 degrees to the horizontal. The appliance shall be positioned and loaded with whatever combination of separable components, liquid, saturated grounds, or other media (material) that results in the maximum tendency to overturn under conditions of normal use. Saturated grounds shall be obtained from a normal brewing cycle. The appliance shall contain a minimum of 5 oz (148 mL) of liquid. The appliance shall reduce the risk of sliding on the inclined surface. The appliance shall not overturn as a result of this test.

26.6 If any part of an appliance requires proper assembly, for example fully inserting a lid or engagement of a twist-lock part, in order to reduce a risk of injury to persons, then improper assembly that may result in a risk of injury to persons shall be clearly visible to the user. A coffee urn or similar water-heating appliance that is not lifted or tilted to dispense the liquid and that has a capacity of more than 17.5 oz (520 mL) shall be:

- a) Provided with such a lid and
- b) Tested as required by 26.9.

26.7 The construction of an appliance shall be such as to minimize the possibility of physical injury when pouring under conditions simulating intended normal use. The pouring spout shall be constructed so that the direction and rate of liquid flowing from the spout will be as anticipated. Liquid shall not be emitted from other than the spout in the intended use.

26.8 An appliance, or that part of an appliance (such as a carafe), that requires lifting and tilting to dispense the liquid and that has a capacity of more than 17.5 fluid oz (520 mL) shall withstand the tip-over test described in 26.11, with the following acceptable results:

- a) The lid, if provided, shall stay in place.
- b) The average rate of liquid emitted during the first 5 s from the appliance during any tip over shall not be more than 4-1/2 oz (133 mL)/s. The average of the average rates of liquid emitted for all tip overs shall not be more than 3-1/2 oz (104 mL)/s. The rate shall be computed by using the time period of 5 s.

26.9 A coffee urn or similar water-heating appliance that is not lifted or tilted to dispense the liquid and that has a capacity of more than 17.5 oz (520 mL) shall be subjected to the test described in 26.11. The lid shall not become dislodged.

26.10 An appliance or a separate vessel that is lifted or tilted to dispense the liquid need not comply with 26.8 if, when tested in accordance with 26.11, the critical angle of balance is 45 degrees or greater.

26.11 A total of three samples are to be tested and each sample is to be tested three times. Each sample of the appliance, while in the well heated condition, is to be placed on a horizontal surface of laminated thermosetting counter-top-type material. The appliances are to be oriented in a position that

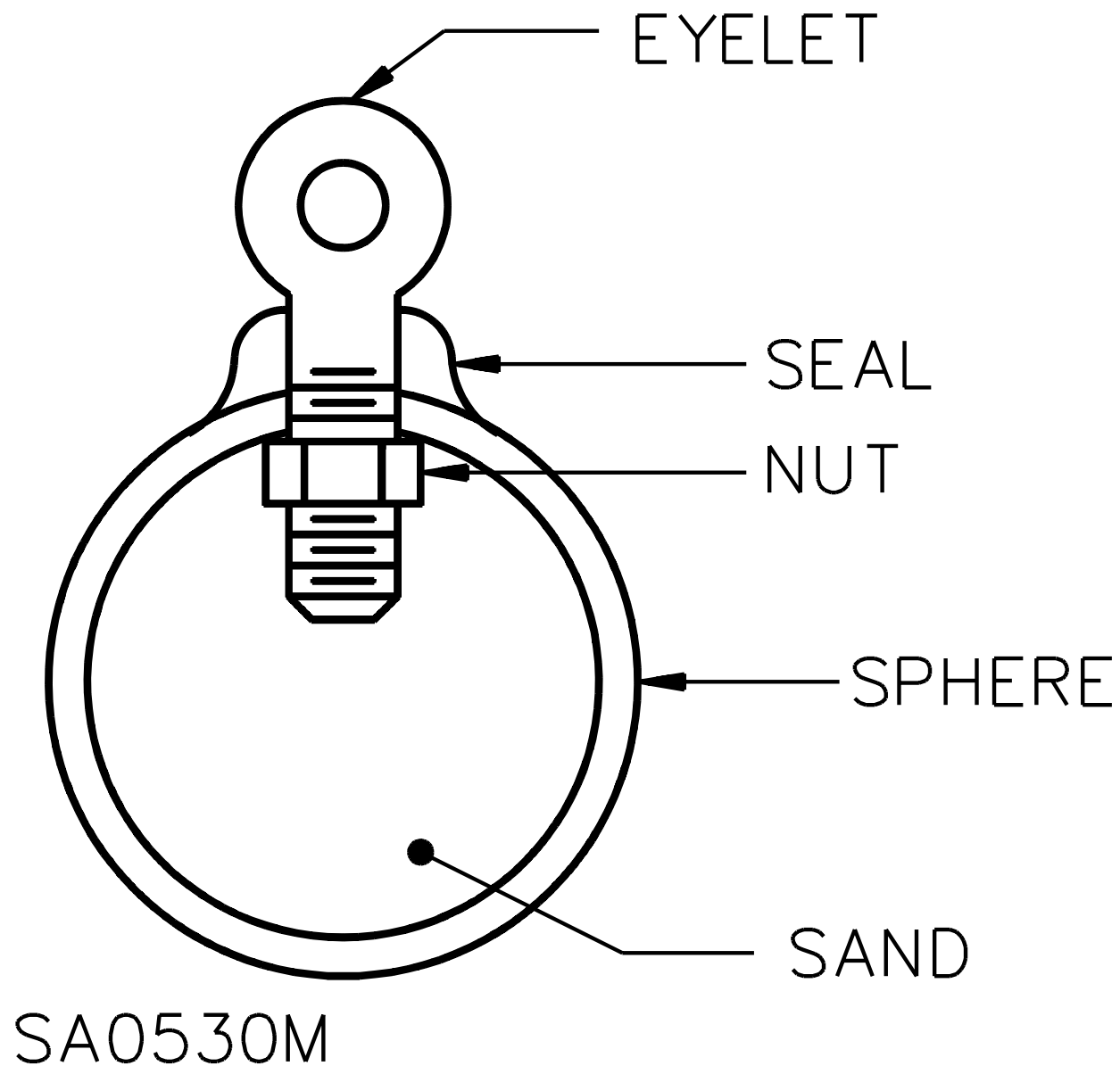
is likely to occur in normal use, and are to contain whatever combination of separable components, liquid, saturated grounds, or other media that results in the most adverse condition for this test. The sample is then to be tilted such that, when released from its critical angle of balance, it will tip over due only to the force of gravity (that is, free fall).

26.12 An appliance or a separate vessel that is lifted or tilted to dispense the liquid need not comply with the requirements in 26.8 if, when subjected to a 0.75 ft-lbf (1.02 N·m) impact as described in 26.13, it complies with either (a) or (b) as follows:

- a) If tip-over does not occur, the appliance, container, and the like is not to emit more than 3-1/2 oz (104 mL) of liquid as a result of any one impact.
- b) If tip-over occurs, the appliance or separate vessel shall comply with the requirements in 26.8 (a) and (b), oriented in the position that caused the tip-over.

26.13 With reference to 26.12, an appliance, container, and the like is to be subjected to the impact of 0.75 ft-lbf (1.02 N·m) on a horizontal surface consisting of laminated thermosetting counter top type material adhered to a wood base surface rigidly fixed for the intended use. 1/8 inch (3.2 mm) thick (uncompressed) polyurethane foam material, such as that used for packing, is to be placed under the bottom of the appliance to prevent sliding. The appliance is to be positioned and loaded to full capacity with the combination of materials specified in 26.5. If a lid is provided, it is to be placed on the appliance in the intended manner. A sphere, illustrated in Figure 26.1, is to be suspended from a cord and allowed to swing as a pendulum in such a manner as to strike the appliance with an impact of 0.75 ft-lbf (1.02 N·m) at a point most likely to cause tip-over. See Figure 26.2.

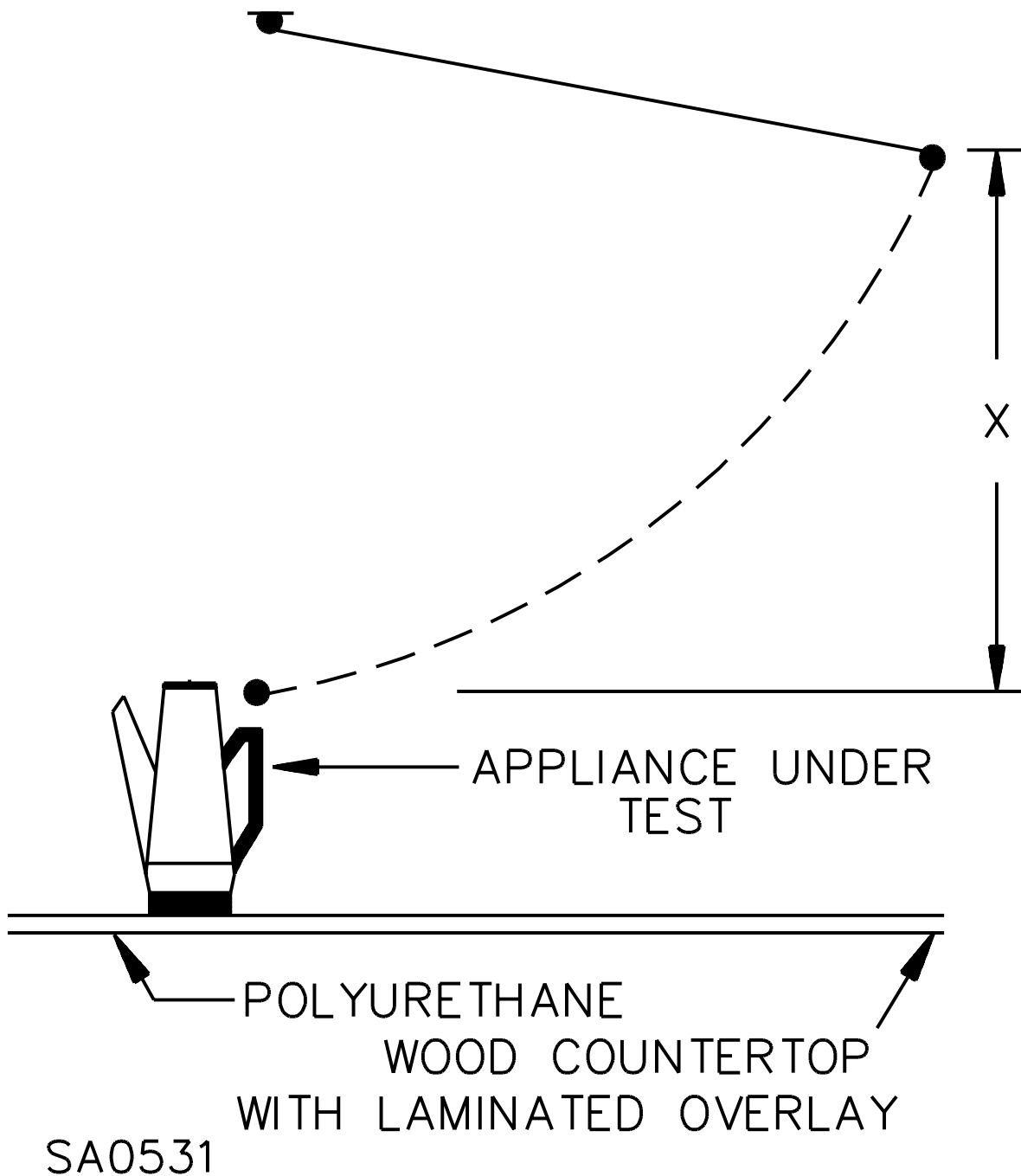
Figure 26.1
Ball for dynamic stability test



Eyelet –	1-1/2 inches (38 mm) long No. 10, steel
Seal –	Silicone rubber
Sphere –	Natural rubber or neoprene. Hollow with 1/32 – 3/32 inch (0.8 – 2.4 mm) thick wall. 2-1/8 – 2-3/8 inch (54 – 60 mm) diameter.
Sand –	No. 60 core
Total Weight –	0.30 – 0.36 pounds (136.1 – 163.3 g)

Figure 26.2
Dynamic stability test

Figure 26.2 revised April 30, 1998



1) The point at which the sphere impacts the appliance is to cause the most adverse condition for this test.

2) X is the height required to produce a 0.75 ft-lbf (1.02 N-m) impact on the appliance when the sphere is at its lowest point of travel.

26.14 The release mechanism for detachable handles shall be:

- a) So located and/or so guarded that inadvertent detachment of the handle does not occur during normal use of the appliance, and
- b) So constructed that complete and proper engagement of the handle is obvious to the user during the operation of attaching the handle.

27 Pressure Vessels and Parts Subject to Pressure

27.1 Espresso coffee makers shall be so constructed that the coffee filter cannot be removed by a simple or unintentional operation when the vessel is pressurized. A coffee filter that can only be removed after having been rotated through an angle of at least 30 degrees is considered to comply with this requirement. A coffee filter holder provided with two separate and distinct means for securement onto the machine, accomplished either manually or by an automatic process, is also acceptable.

27.2 An espresso maker shall include a distinctive marking, such as an arrow, vertical bar, dot, or other equivalent marking, or the word "lock ", which clearly indicates the proper position to secure the coffee filter holder during the brewing cycle. This marking shall be located directly above the position of the filter holder handle when the filter holder is properly secured.

27.2 added November 22, 1997

27.3 Except as noted in 27.4, a pressure vessel having an inside diameter of more than 6 inches (152 mm) and subject to a gauge pressure of more than 15 lbf/in²(103 kN/cm² or 10.5 gf/mm²) shall be certified by the National Board of Boiler and Pressure-Vessel Inspectors and marked in accordance with the appropriate boiler and pressure vessel code symbol of the American Society of Mechanical Engineers (ASME) ("H ", "M ", "S ", or "U ") for a working pressure not less than the pressure determined by applying 27.5.

27.4 If a pressure vessel, because of its application, is not covered under the inspection procedures of the ASME code, it shall be so designed and constructed that it will comply with the requirements in 27.4 – 27.7.

27.5 The espresso-coffee maker is to be operated until maximum pressure is attained at rated voltage or at the upper limit of a rated voltage range, with the coffee-filter blocked and the steam valve, if provided, closed, except that, during the period that steam is produced, the supply voltage shall be such that the input is equal to the maximum rated input. If the steam valve is linked to the switch used for starting the production of steam, this link must not be disturbed during determination of maximum pressure. The maximum pressure is to be noted.

27.6 The espresso-coffee maker is then subjected for five minutes, to a pressure equal to twice the maximum pressure noted. The over pressure may be supplied from an external source, care being taken to ensure that the espresso-coffee maker is at its intended operating temperature for starting the brewing period.

27.7 During the test described in 27.6, the espresso maker shall not rupture and there shall be no leakage other than at places intended for that purpose. Leakage is only acceptable through a self-resetting overpressure relief. At the conclusion of the test described in 27.6 the coffee-maker shall perform in its intended manner.

27.8 Following the test outlined in 27.6, the coffee-maker is subjected to the same pressure as described in 27.6 except with any means for limiting the pressure during determination of the maximum pressure made inoperative. During this test the steam outlet is blocked, as it is regarded as the limiting device during determining the maximum pressure. The coffee-maker shall withstand this test without exploding or emitting hazardous jets of fluid.

No Text on This Page

27.9 If an intentionally weak part ruptures during the test in 27.8, a second sample is to be tested with identical results. Rupture of an intentionally weak part shall render the coffee-maker unfit for further use.

27.10 A means for relieving pressure shall be provided for all parts in which pressure might be generated in the event of fire.

27.11 Pressure-relief devices (see 27.17), fusible plugs, soldered joints, nonmetallic tubing, or other pressure-relief means or the equivalent may be employed to comply with the requirements in 27.10.

27.12 There shall be no shut-off valve between the pressure-relief means and the parts that it is intended to protect.

27.13 A vessel having an inside diameter of more than 3.0 inches (76.2 mm) and subject to air or steam pressure generated or stored within the appliance shall be protected by a pressure-relief device.

27.14 The start-to-discharge pressure setting of the pressure-relief device shall not be higher than the working pressure marked on the vessel. The discharge rate of the device shall acceptably relieve the pressure.

27.15 A pressure-relief device shall comply with all four of the following:

- a) Shall be connected as close as possible to the pressure vessel or parts of the system that it is intended to protect.
- b) Shall be so installed that it is readily accessible for inspection and repair and cannot be readily rendered inoperative.
- c) Shall have its discharge opening so located and directed that the risk of scalding is reduced to a minimum.
- d) Shall have its discharge opening so located and directed that operation of the device will not deposit moisture on bare live parts or on insulation or components affected detrimentally by moisture.

27.16 A pressure-relief device having an adjustable setting is judged on the basis of its maximum setting unless the adjusting means is sealed at a lower setting.

27.17 A pressure-relief device is considered to be a pressure-actuated valve or rupture member intended to relieve excessive pressures automatically.

27.18 Where a pressure-relief device is required, the control responsible for limiting the pressure in the vessel shall be capable of performing under rated load for 100,000 c of operation and shall prevent the pressure from exceeding 90 percent of the relief device setting under any condition of normal operation.

PERFORMANCE

28 General

28.1 The performance of an appliance shall be investigated by subjecting the required number of appliances to all the applicable tests as described in Sections 29 – 45. Appliances employed for leakage-current tests shall be first tested for leakage prior to employing them for other tests.

29 Resistance of Grounding Test

29.1 The resistance between the point of connection of the equipment-grounding means at or within the appliance and any other point in the grounding circuit of the appliance shall not exceed 0.1 ohms.

29.2 Compliance with the requirement in 29.1 is to be determined by:

- a) A resistance-measuring instrument, or
- b) Passing an alternating current of at least 25 amperes from a power supply of not more than 12 volts from the grounding pin of the attachment plug cap to a point in the grounding circuit, and then measuring the resulting drop in potential between the two points. The resistance in ohms is to be determined by dividing the drop in potential in volts by the current in amperes passing between the two points.

30 Power Input

30.1 The power input to an appliance shall not be more than 105 or less than 90 percent of its marked rating.

30.2 To determine if an appliance complies with the requirement in 30.1, the power input is to be measured with the appliance at normal operating temperature under full-load conditions and while connected to a supply circuit adjusted to the highest voltage of the following:

- a) The marked voltage rating or
- b) 120 V, whichever is appropriate for the appliance.

31 Leakage Current Test

31.1 The leakage current of a cord-connected appliance rated for a nominal 120-V or 240-V supply when tested in accordance with 31.1 – 31.7 shall not be more than:

- a) 0.5 mA for an ungrounded (2-wire) appliance,
- b) 0.5 mA for a grounded (3-wire) appliance that is easily carried or conveyed by hand, and
- c) 0.75 mA for a grounded (3-wire) permanently connected appliance, or a cord connected appliance that is intended to be fastened in place or located in a dedicated space and employing a standard attachment plug rated 20 A or less.

Exception: The leakage current of an appliance incorporating a sheath type heating element, when measured in accordance with 31.3 – 31.7, shall not exceed 2.5 mA during the first 5 min after reaching the leakage current limit of 0.5 mA or 0.75 mA, as applicable, and at the end of this time, the leakage current shall be not more than the 0.5 mA or 0.75 mA limit as applicable – the leakage current is to be monitored during heat-up and cool-down.

31.2 Leakage current refers to all currents, including capacitively coupled currents, that may be conveyed between exposed conductive surfaces of an appliance and ground or other exposed conductive surfaces of an appliance.

31.3 All exposed conductive surfaces are to be tested for leakage currents. The leakage currents from these surfaces are to be measured to the grounded supply conductor individually as well as collectively where simultaneously accessible and from one surface to another where simultaneously accessible. Parts are considered to be exposed surfaces unless guarded by an enclosure considered acceptable for protection against electric shock as defined in 7.1 – 7.13. Surfaces are considered to be simultaneously accessible when they can be readily contacted by one or both hands of a person at the same time. These measurements do not apply to terminals operating at voltages which are not considered to involve electric shock.

31.4 If a conductive surface other than metal is used for the enclosure or part of the enclosure, the leakage current is to be measured using a metal foil with an area of 10 by 20 cm (3.9 by 7.9 inches) in contact with the surface. Where the surface is less than 10 by 20 cm, the metal foil is to be the same size as the surface. The metal foil is not to remain in place long enough to affect the temperature of the appliance.

31.5 The measurement circuit for leakage current is to be as shown in Figure 31.1. The ideal measurement instrument is defined in (a) – (d). The meter which is actually used for a measurement need only indicate the same numerical value for a particular measurement as would the ideal instrument. The meter used need not have all the attributes of the ideal instrument.

- a) The meter is to have an input impedance of 1500 ohms resistive shunted by a capacitance of 0.15 μ F.
- b) The meter is to indicate 1.11 times the average of the full-wave rectified composite wave-form of voltage across the resistor or current through the resistor.
- c) Over a frequency range of 0 – 100 kHz, the measurement circuitry is to have a frequency response (ratio of indicated to actual value of current) that is equal to the ratio of the impedance of a 1500 ohm resistor shunted by a 0.15 microfarad capacitor to 1500 ohms. At an indication of 0.5 mA, the measurement is to have an error of not more than 5 percent at 60 Hz.
- d) Unless the meter is being used to measure leakage from one part of an appliance to another, the meter is to be connected between the accessible parts and the grounded supply conductor.

31.7 Normally a sample will be carried through the complete leakage current test program as covered by 31.6, without interruption for other tests. With the concurrence of those concerned, the leakage current tests may be interrupted for the purpose of conducting other nondestructive tests.

No Text on This Page

32 Operational Tests

32.1 Operation of an appliance while simulating anticipated conditions of use shall not increase the risk of fire, electric shock, or injury to persons.

32.2 In conducting the test, the conditions mentioned in the manufacturer's instructions, including cleaning, maintenance, and the use of accessories may be included or omitted so as to simulate reasonably foreseeable actions of the user.

33 Normal Temperature Tests

33.1 General

33.1.1 An appliance, when tested under the conditions described in 33.1.3 – 33.2.4.1, shall comply with all three of the following conditions:

- a) The appliance shall not attain at any point a temperature sufficiently high to constitute a risk of fire or to damage any materials employed in the appliance.
- b) At any time during the test – other than as indicated in 33.1.2 – temperature rises at specific points shall not be greater than indicated in Table 33.1.
- c) The appliance shall comply with the requirement in 7.1.

33.1.2 Initial temperature transients may be in excess of the value shown in Table 33.1 if the duration and extent of the excursion do not result in material property changes to the extent that risk of fire or electric shock results.

33.1.3 All values in Table 33.1 are based on an assumed ambient (room) temperature of 25°C (77°F), but a test may be conducted at any ambient temperature within the range of 10 – 40°C (50 – 104°F). However, if the operation of an automatic thermal control during the test limits the temperatures under observation, no temperature higher than 25°C (77°F) plus the specified maximum rise is acceptable.

Table 33.1
Maximum acceptable temperature rises

	Materials and component parts	Degrees C	Degrees F
1.	Fiber used as electrical insulation or as cord bushings	65	117
2.	Wood or other combustible material which is a part of an appliance	65	117
3.	Cotton or rayon braid of a flexible cord	65 ^a	117 ^a
4.	Phenolic composition used as electrical insulation or where deterioration would result in a risk of fire or electric shock ^b	125	225
5.	Points on surface supporting an appliance other than wall-mounted and under-cabinet mounted	125	225
6.	Any point on a surface adjacent to a wall-mounted or under-cabinet mounted appliance including the surface on which the appliance is mounted	65	117
7.	Points on adjacent surfaces of the tests corner for counter-top appliances	100	180
8.	Flatiron or appliance plug	175	315
9.	Insulated wire or cord	25°C (77°F) less than its temperature rating ^c d	
10.	Sealing compound		
11.	A. Copper, tinned or bare strands: a.less than 0.015 inch (0.38 mm) in diameter b.0.015 inch diameter and larger B. Nickel, gold, or silver platings or combinations of those platings, over copper conductors	125 175 225	225 315 405
12.	Termination of copper conductor and pressure terminal connector without being nickel-coated or otherwise appropriately protected	125	225
13.	Points likely to be contacted by hand or fingers while supporting an appliance ^e A. Metal surface B. Surface of porcelain or vitreous material C. Surface of molded material, rubber, or wood	30 40 50	54 72 90

^a Inside an appliance, the braid of a heater cord may be subjected to a greater rise if the asbestos insulation is held in place by other appropriate means.

^b The limitation on phenolic composition does not apply to a compound which has been investigated and found to have special heat-resistant properties.

^c Inside an appliance, the temperature rise on a wire or cord may be greater than the specified maximum rise, provided that the insulation on each individual conductor is adequately protected by supplementary insulation (such as braid, wrap, tape, or close-fitting tubing) for the temperature and the type of insulation involved.

^d Unless a thermosetting material, the maximum sealing compound temperature when corrected to a 25°C (77°F) ambient temperature, is 15°C (27°F) less than the softening point of the compound as determined by the Ball and Ring Apparatus, ASTM E28-1967(1992).

^e Coatings or special materials are to be considered on an individual basis.

33.1.4 A gasket which is depended upon to prevent the entrance of water into an appliance during cleaning shall not become hard or brittle, shall not crack, and shall show no other signs of deterioration as a result of an accelerated-aging test in which the gasket is subjected to elevated temperatures. See 34.5.

33.1.5 The temperature to which the gasket is subjected during the test, as well as the duration of the test, is to be determined in accordance with the material of the gasket, the temperature to which it is subjected during operation, and other conditions of the particular application. Normally the appliance is to be operated dry and for a period of 240 h, except that an automatic coffee maker is to be initially filled with water.

33.1.6 Following the accelerated aging, the sample is to be immersed, tested, and examined for the entrance of water in accordance with 34.7.

33.1.7 Temperatures are to be measured by thermocouples consisting of wires no larger than No. 24 AWG and no smaller than No. 30 AWG, except that a coil temperature may be determined by the change-of-resistance method if the coil is inaccessible for mounting thermocouples. When thermocouples are used in determining temperatures in electrical equipment, it is standard practice to employ thermocouples consisting of No. 30 AWG iron and constantan wire and a potentiometer-type instrument, and such equipment is to be used whenever referee temperature measurements by thermocouples are necessary. The thermocouple wire is to conform with the requirements for special thermocouples as listed in the table of limits of error of thermocouples Temperature-Measurement Thermocouples, ANSI MC96.1-1982. The thermocouples and related instruments are to be accurate and calibrated in accordance with good laboratory practice.

33.1.8 For tests that are to be continued until constant temperatures are attained, thermal equilibrium is to be considered to exist only if three successive readings indicate no change when taken at the conclusion of each of three consecutive equal intervals of time, the duration of each interval being whichever of the following is longer:

- a) 5 minutes, or
- b) 10 percent of the total test time elapsed previous to the start of the first interval.

33.1.9 A thermocouple junction and adjacent thermocouple lead wire are to be securely held in good thermal contact with the surface of the material whose temperature is being measured. In most cases, good thermal contact will result from securely taping or cementing the thermocouple in place but, if a metal surface is involved, brazing, welding or soldering the thermocouple to the metal may be necessary.

33.1.10 To determine whether an appliance complies with the requirements in 33.1.1, the appliance is to be operated continuously until constant temperatures have been reached.

33.1.11 The test voltage is to be the highest of the following:

- a) The marked voltage rating,
- b) 120 V, or
- c) The voltage that results in the appliance operating at rated wattage.

33.1.12 In conducting a test to determine whether or not an appliance complies with the temperature requirements, it is to be mounted or supported as in service and tested under conditions approximating those of normal operation, except as otherwise noted. Temperatures are to be observed on nearby surfaces, on the supporting surface, at points of support, on attachment plugs, and at other points as may be necessary.

33.1.13 A counter-top appliance is to be supported on two layers of white tissue paper on a softwood surface.

33.1.14 A counter-top appliance is to be tested in a test corner with the appliance located 4 inches (100 mm) away from the side and rear walls of the test corner. The 4-inch (100-mm) spacing is to be measured from the outer-most extremity of the appliance. The test corner is to consist of dull black-painted fir plywood not less than 3/8 inch (9.5 mm) thick, having such width and height that the walls extend not less than 2 ft (0.61 m) beyond the physical limits of the appliance. The vertical walls are to meet at a right angle.

Exception: An appliance such as a percolator with a relatively low surface temperature need not be tested in an alcove corner.

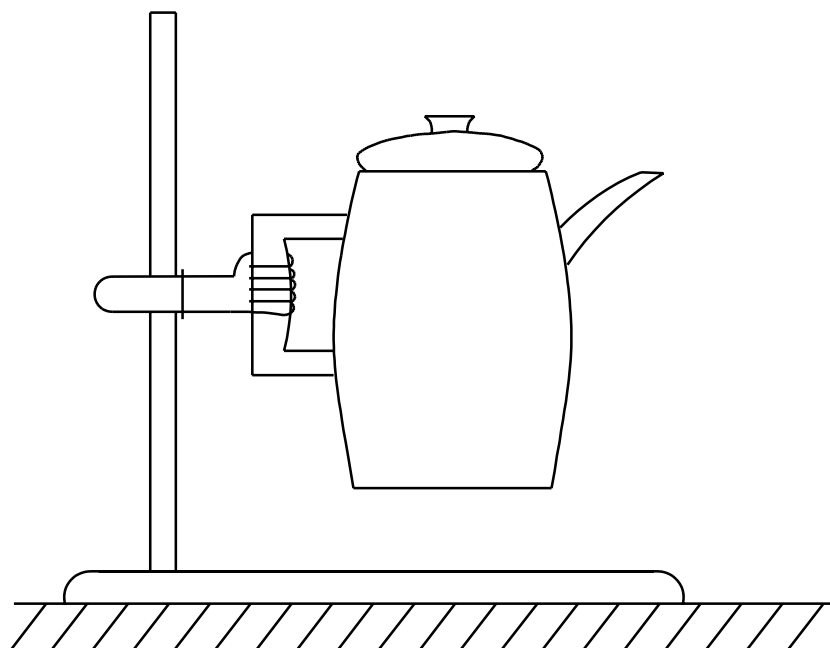
33.1.15 A cord-connected wall or under-cabinet mounted appliance is to be mounted on one wall or cabinet bottom of a test corner consisting of dull black-painted fir plywood not less than 3/8 inch (9.5 mm) thick, having such a width and height that the walls extend not less than 2 ft (0.61 m) beyond the physical limits of the appliance. The vertical walls are to meet at a right angle. Unless marked as described in 50.12, the appliance is to be placed as close to the corner wall as the construction will permit, and an under-cabinet appliance is to be in contact with the rear wall while a wall-mounted appliance is to be in contact with either the cabinet bottom or the counter, whichever results in the highest temperature. The cabinet bottom is to be 12 inches (300 mm) deep, located 16 inches (400 mm) above the counter top. The surface beneath the unit is to be softwood covered with a double layer of white tissue paper.

33.1.16 Thermocouples are to be mounted on wood surfaces using the method illustrated in Figure 33.2 or the equivalent. Starting in the corner, thermocouples are to be placed every 3 inches (76 mm) on each surface (Figure 33.3) so that a minimum area of 18 by 18 inches (460 by 460 mm) is covered by the thermocouples on each surface.

33.1.17 During the normal temperature test, a temperature-limiting device provided for overheating protection shall not operate.

33.1.18 An automatic temperature-regulating or -limiting control or other protective device provided as a part of an appliance is to be shunted out of the circuit, unless the device is suitable for the application as required by 45.2.1.1 and the control is unlikely to be defeated by the user.

Figure 33.1
Typical means of supporting coffee makers



S2303

Figure 33.2
Method of mounting thermocouples

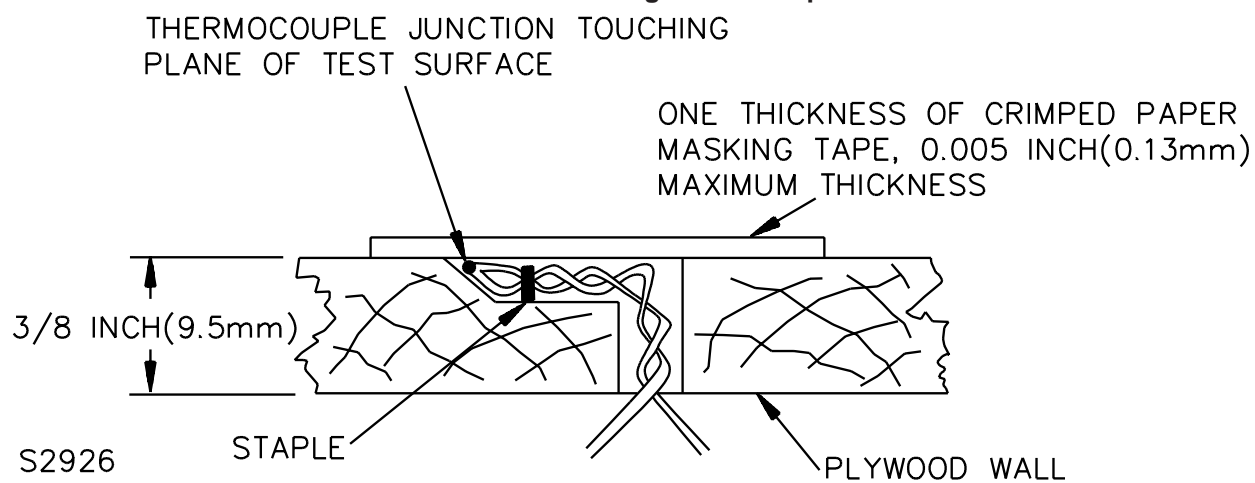


Figure 33.3
Thermocouple spacings

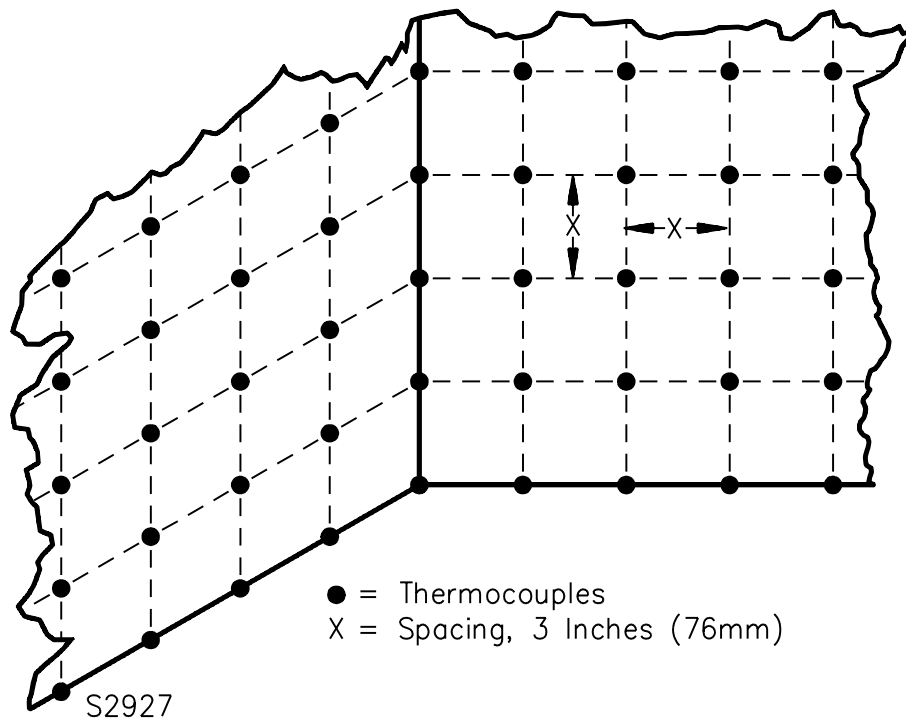
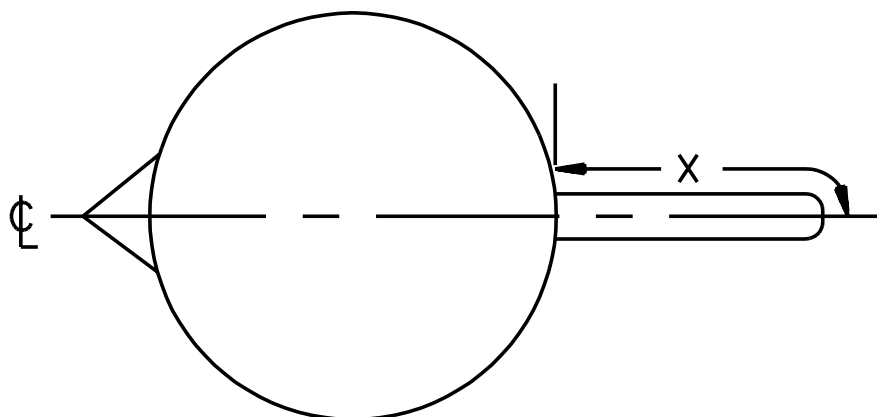
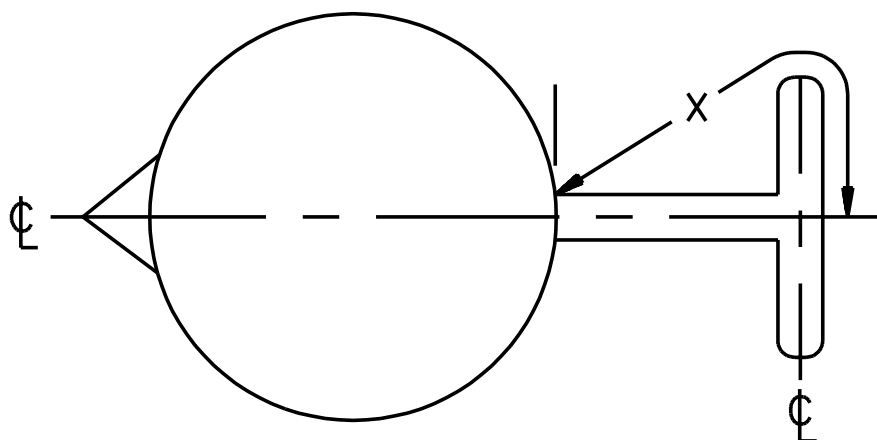


Figure 33.4
Appliance viewed from top



PLAIN WEBBED HANDLE



T-SHAPED WEBBED HANDLE

S3490

X = THE SHORTEST DISTANCE AROUND THE HANDLE FROM ITS POT END TO ITS CENTER LINE

33.1.19 If the construction of an appliance is such that cooking or heating of a liquid is a determining factor in the temperature attained, the intended duty of an appliance is to be taken into consideration. Accordingly, in determining whether an appliance complies with the requirements in 33.1.1, actual service conditions or an approximation thereof are to be employed. If the appliance is controlled by an adjustable thermostat, the thermostat is to be set to give maximum temperatures. If the appliance is controlled by a nonadjustable thermostat, it is to be allowed to operate at whatever temperature the thermostat permits. In each case, operation is to be continued until temperatures are stabilized.

33.1.20 With reference to Item 13 of Table 33.1, points likely to be contacted by hand or fingers include those points on the gripping surface, and adjacent surfaces close enough to be touched while supporting the appliance in the normal intended manner. See 33.1.21 – 33.1.24.

33.1.21 The length of the gripping surface of a handle is considered to be as follows:

- a) Four inches (102 mm) for an open or D-shaped handle.
- b) The entire handle for a webbed type handle.

33.1.22 Points on the surface of an appliance employing an open or D-shaped handle are not considered likely to be contacted if:

- a) They are protected by a barrier not less than 5/8 inch (15.9 mm) wide on which the temperature rise does not exceed the value indicated in Item 13 of Table 33.1, or
- b) A through-air spacing of not less than 1.5 inch (38 mm) at the index finger, tapering to 1.25 inch (32 mm) at the other end of the hand, is provided from the gripping surface to the hot part.

33.1.23 Points on the surface of an appliance employing a webbed type handle are not considered likely to be contacted if:

- a) They are protected by a barrier extending not less than 1/2 inch (12.7 mm) on either side of the web on which the temperature rise does not exceed the value indicated in Item 13 of Table 33.1, or
- b) The length "x" indicated in Figure 33.4 is not less than 4.25 inches.

33.1.24 If the temperature rise on a rivet or screw in a barrier or handle, which would be touched in the normal gripping or lifting action, exceeds the value given in Item 13 of Table 33.1, it is to be recessed at least half the diameter of the hole, and the hole is to be no larger than 3/8 inch (9.5 mm) in diameter.

33.1.25 To determine if the strength of a thermoplastic handle is adequate to maintain the minimum spacing to a hot surface mentioned in 33.1.22(b) or 33.1.23(b) while in a heated condition, the following test is to be conducted. The spacing is to be maintained after the vessel has been conditioned for one hour with water maintained at a temperature equal to the maximum temperature measured during the temperature test, including the "keep warm" cycle, or that temperature that occurs when a separate vessel is filled following a "brew" cycle. The spacing is to be measured while supporting the vessel with a 2 inch (51 mm) wide gripping area (centered over the intended gripping area) and after the vessel has been supported and maintained in a vertical position for one minute. See Figure 33.1.

33.2 Specific test conditions

33.2.1 General

33.2.1.1 For most of the common types of heating appliances, standardized normal conditions for the temperature test are given in 33.2.2.1 – 33.2.4.1.

33.2.2 Vacuum-type coffee makers

33.2.2.1 The appliance is to be operated continuously, warming water in the intended decanters. As the water in the initial decanter reaches the temperature at which it is forced into the upper section of the coffee-maker, it is to be replaced by a fresh decanter of water at a temperature of 10 – 15°C (50 – 59°F).

33.2.3 Automatic type appliances

33.2.3.1 With the thermostat set in the position that results in maximum temperatures, the appliance is to be operated for 3 c, as follows: at the beginning of each cycle, the appliance is to be filled with the intended amount of water and the thermostat is to be set at the position which results in maximum temperature. The water temperature is not to be higher than room temperature. The cycle is considered as having ended when the thermostat automatically switches to the low or off position. The interval between cycles is to be approximately 30 s. Temperatures are to be measured throughout the 3 c, and also when the appliance has subsequently operated at low heat until temperatures have become stabilized.

Exception No. 1: A coffee maker having a capacity greater than 75 oz (2.22 L) is to be operated for one, rather than three brewing cycles.

Exception No. 2: Starting with cold water, a hot pot is to be operated for 30-min cooking 8 medium size eggs or the maximum number of eggs the appliance holds, whichever is less. Temperatures are to be monitored during the 30 min and the highest temperatures recorded.

33.2.4 Nonautomatic type appliances

33.2.4.1 The appliance is to be filled with the intended amount of water and operated until temperatures have become stabilized. Additional water is to be added during the test if the water level becomes lower than the half-full mark.

34 Leakage Current as a Result of Moisture Tests

34.1 An appliance employing insulation material liable to be affected adversely by moisture under condition of normal use shall be conditioned for 48 h in moist air having a relative humidity of 88 ±2 percent at a temperature of 32.0 ±2.0°C (89.6 ±3.6°F). After the conditioning: The appliance shall comply with the requirement in 31.1 in a repeat leakage current test, except that the test shall be discontinued when leakage current stabilizes.

34.2 An additional sample of the appliance shall be tested as follows, if glass-fiber sleeving is used as electrical insulation in a rope heater assembly. The appliance shall be operated for 96 continuous hours under the condition resulting in the maximum temperature on the sleeving, as determined from the normal temperature test, following which it shall be conditioned for 48 h in moist air having a relative humidity of 88 ± 2 percent at a temperature of $32.0 \pm 2.0^\circ\text{C}$ ($89.6 \pm 3.6^\circ\text{F}$). After the conditioning, the appliance shall comply with the requirement in 31.1 in a repeat leakage test, except that the test shall be discontinued when the leakage current stabilizes. Following the leakage current test, the appliance shall also comply with the dielectric voltage-withstand test requirement of 35.1.

34.3 An appliance which is likely to be immersed in water for cleaning shall show a leakage current of no more than 0.5 mA and shall be capable of withstanding a potential of 1000 V when tested in accordance with 34.4 – 34.8. The test shall not result in the entrance of water into the interior of the appliance such that the water might come into contact with uninsulated live parts.

Exception: An appliance marked to indicate that it is not intended for immersion need not comply with the requirements of 34.3. See 50.9.

34.4 Three samples of the appliance are to be heated as described in 34.6 and are then to be immersed immediately in water at a temperature of $10 - 25^\circ\text{C}$ ($50 - 77^\circ\text{F}$). The immersion is to be complete unless the appliance is marked to indicate that it is intended for partial immersion only (see 50.9), in which case each appliance is to be immersed only to the extent indicated. After 1 h of immersion, the samples are to be removed from the water, dried with a soft cloth to remove all surface moisture, including surface moisture from terminal pins, and the samples are to be tested for leakage current.

34.5 The entire procedure of immersion and leakage current measurement is to be repeated four times, immediately following which each sample is to be subjected to a 1000-V dielectric voltage-withstand test as described in 35.1. The three samples are to be used for aging tests, and are required to comply with the requirements in 33.1.4 – 33.1.6. If there is an air cavity having electrical components, the three samples are to be disassembled and the internal parts visually examined for the presence of water. (See 34.3 and Table 34.1).

34.6 A nonautomatic coffee maker is to be operated as described in 33.2.4.1. An automatic coffee maker is to be heated in accordance with 34.9.

34.7 Two additional samples of an automatic coffee maker, initially at room temperature, are to be operated dry until the thermostat automatically switches to the low or off position, and are then to be immersed immediately in water at a temperature of $10 - 25^\circ\text{C}$ ($50 - 77^\circ\text{F}$). After 1 h of immersion, the leakage current of each of the two samples is to be measured, and each sample is to be subjected to a 1000-V dielectric voltage-withstand test as described in 35.1. If there is an air cavity having electrical components, both samples are to be disassembled and the internal parts visually examined for the presence of water (see 34.3).

34.8 One of the samples tested in accordance with 34.7 (or an additional sample, if necessary) is to be reassembled, filled with the intended amount of water, and operated with the thermostat at the maximum setting until the temperature of a gasket or seal becomes stabilized. The temperature of the gasket or seal is to be noted when the thermostat automatically switches to the low or off position. Without disconnecting the appliance from the supply circuit, the utensil is to be emptied and operation without water continued until the temperature of the gasket or seal again becomes stabilized.

34.9 The three samples to be used for the tests described in 34.4 and 34.5 are to be operated, as described in 34.8, to the point at which the maximum temperature was observed.

Table 34.1
Immersion tests

All cooking appliances likely to be immersed				Automatic coffee makers only	
	Sample No. 1	Sample No. 2	Sample No. 3	Sample No. 4	Sample No. 5
First 5 Cycle	Conditionings for Tests			Heat from dry start	
	Automatic coffee maker – initially filled and emptied after thermostat operates – immerse at maximum seal temperature			Immerse for one hour	
	Other than coffee maker – initially filled and through-out conditioning			Leakage current test	
	Immerse one hour			High-potential test	
	Dry with cloth				
After 5th Cycles	Leakage current test				
	High-potential test				
	Operate 240 hours				
	Cool to room temperature				
	Reheat as for normal temperature test				
	Immerse for one hour				
	Leakage current test				
	High-potential test				
Note: If there is an air cavity housing electrical components in the appliance, disassemble and examine for water. (Samples No. 4 and No. 5 may be used to determine seal temperature.)					

35 Dielectric Voltage-Withstand Test

35.1 An appliance shall be capable of withstanding for 1 min without an indication of unacceptable performance, the application of a potential applied between live parts and accessible metal parts. The appliance is to be at its maximum normal operating temperature. The test potential shall be 1000 V.

35.2 With respect to 35.1, an appliance having an enclosure constructed partly or totally of insulating material is to have accessible surfaces of the material closely wrapped in metal foil. The test potential is to be applied between live parts and the foil.

35.3 With respect to 35.1 and 35.2, a part is considered to be accessible if it can be contacted by the probe illustrated in Figure 7.2 when applied in all possible articulated positions, with and without the parts referenced in 7.13 in place.

35.4 To determine whether an appliance complies with the requirements in 35.1, the test potential is to be applied as described in 35.6, by means of test equipment having the characteristics outlined in 35.5.

35.5 The test equipment for conducting the dielectric voltage-withstand test is to have the following features and characteristics:

- a) A means for indicating the test voltage that is being applied to the appliance under test. This may be accomplished by sensing the voltage at the test leads or by an equivalent means.
- b) An output voltage that:
 - 1) Has a sinusoidal waveform,
 - 2) Has a frequency that is within the range of 40 – 70 Hz, and
 - 3) Has a peak value of the waveform that is not less than 1.3 and not more than 1.5 times the root-mean-square value.
- c) A sensitivity of the test equipment that is such that when a resistor of 120,000 ohms is connected across the output, the test equipment does not indicate unacceptable performance for any output voltage less than the specified test voltage, and the test equipment does indicate unacceptable performance for any output voltage equal to or greater than the specified test value. The resistance of the calibrating resistor is to be adjusted as close to 120,000 ohms as instrument accuracy can provide, but never more than 120,000 ohms.

Exception: The sensitivity of the test equipment may be increased, a higher value of calibrating resistance may be used, if agreeable to those concerned.

35.6 The method of applying the test voltage to the appliance is to be such that there are not any transient voltages that result in the instantaneous voltage applied to the appliance exceeding 105 percent of the peak value of the specified test voltage. The applied potential is to be increased from zero at a substantially uniform rate so as to arrive at the specified test potential in approximately 5 s, and then is to be maintained at the test potential for one minute. Manual control of the rate of rise may be used.

36 Broken Element Test

36.1 An open-wire heating element in an appliance shall be so constructed and supported so that if the wire is cut at any point there shall be no reduction of electrical spacings below the limits specified in this standard. After being cut, no portion of the heating element wire shall be accessible to contact by the articulate probe through any opening in the enclosure.

36.2 To determine compliance with 36.1:

- a) The appliance is first to have been operated until fully heated as in the Power Input or Temperature Tests, and
- b) After cutting the heating element, the appliance is to be rotated 360° in the direction most likely to cause contact between the heating element and accessible metal parts.

37 Strain Relief Test

37.1 The strain-relief means provided on an attached flexible cord, when tested in accordance with 37.2, shall be capable of withstanding for 1 min, without displacement, a pull of 35 lbf (156 N) applied to the cord, with the connections within the appliance disconnected.

37.2 The specified force is to be applied to the cord and so supported by the appliance that the strain-relief means will be stressed from any angle that the construction of the appliance permits. The strain-relief is not acceptable if, at the point of disconnection of the conductors, there is sufficient movement of the cord to indicate that stress on the connections would have resulted.

37A Push-Back Relief Test

Section 37A added January 9, 1999

37A.1 To determine compliance with 11.2.3, a product shall be tested in accordance with 37A.2 without occurrence of any of the following conditions:

- a) Subjecting the supply cord or lead to mechanical damage;
- b) Exposing the supply cord or lead to a temperature higher than that for which it is rated;
- c) Reducing spacings (such as to a metal strain-relief clamp) below the minimum required values;
or
- d) Damaging internal connections or components.

37A.2 The supply cord or lead is to be held 1 inch (25.4 mm) from the point where the cord emerges from the product and is then to be pushed back into the product. The cord or lead is to be pushed back into the product in 1 inch (25.4 mm) increments until the cord buckles or the force to push the cord into the product exceeds 6 pounds-force (26.7 N). The supply cord or lead within the product is to be manipulated to determine compliance with 11.2.3.

38 Metal Enclosure Impact Tests

38.1 A metal enclosure part shall comply with the tests outlined in 38.2 – 38.5. For polymeric enclosure parts, see the Standard for Polymeric Materials – Use in Electrical Equipment Evaluations, UL 746C.

38.2 A metal enclosure part shall withstand the ball impact, with the appliance restrained, as described in 38.3 without occurrence of any one of the following conditions:

- a) Making live parts accessible to contact with the articulate probe, see 7.11 and 7.12.
- b) Producing any other condition that results in damage of the enclosure so as to adversely affect the function of any safety or constructional feature, such as thermostats, overload-protective devices or strain relief.
- c) Producing other conditions so that the appliance does not comply with the dielectric voltage-withstand requirements in Dielectric Voltage-Withstand Test, Section 35, after being subjected to the impact.

38.3 Each of three samples of the appliance is to be subjected to one impact. This impact is to be imparted by dropping or swinging a 2-inch (50.8-mm) diameter steel sphere, weighing 1.18 lbf (0.535 kg) from a height that will produce an impact of 1.5 ft-lbf (2.03 J). The sample is to be rigidly supported and the impact is to be made perpendicular to the most vulnerable spots on the appliance enclosure that are exposed to a blow during intended use. A different spot on the enclosure is to be selected for each impact. See Figure 38.2 with respect to the ball drop impact test and Figure 38.3 for the ball pendulum impact test.

Exception: If the manufacturer elects, fewer than three samples may be used for the test in accordance with Figure 38.1, wherein each series consists of one impact. The overall performance is acceptable upon completion of any one of the procedures represented in Figure 38.1.

Figure 38.1
Procedure for impact test

Series Num- ber	Sample Number								
	1	2	3	1	2	3	1	2	3
1	↓ A	N	N	↓ A	N	N	↓ A	N	N
2	↓ A	N	N	↓ A	N	N	↓ U	↓ A	N
3	↓ A	N	N	↓ U	↓ A	N	↓ A	N	↓ U

Arrows indicate sequence of test procedure

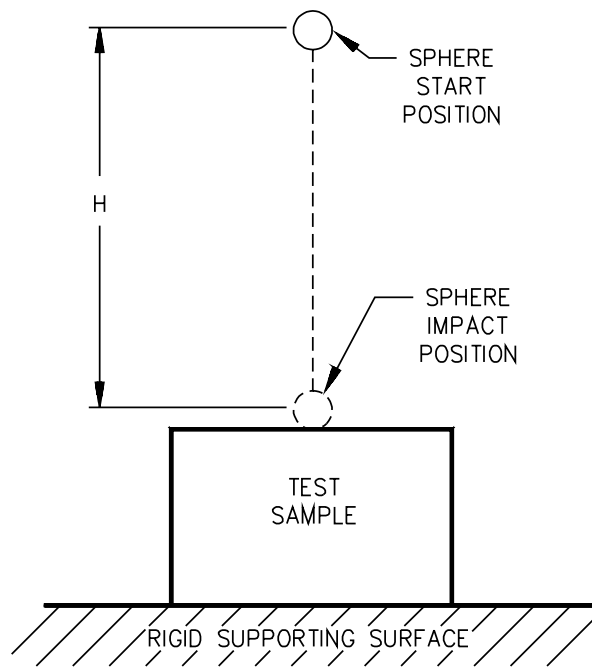
A – Acceptable results from drop

U – Unacceptable results from drop

N – No test necessary

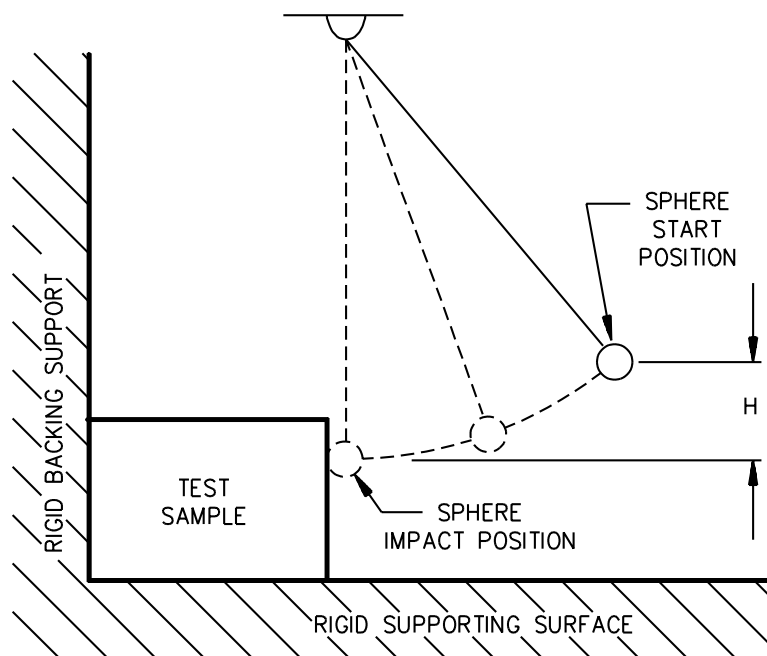
SA1162

Figure 38.2
Ball drop impact test



IP120

Figure 38.3
Ball pendulum impact test



IP 160

38.4 With reference to Figures 38.2 and 38.3, the "H" designation represents the vertical distance the sphere must travel to produce the desired impact. For the pendulum impact, the sphere is to contact the test sample when the string is in the vertical position. The supporting surface is to be as described in 38.5. The backing surface for the pendulum impact is to consist of 3/4-inch (18 mm) plywood over a rigid surface of concrete or an equivalent nonresilient backing surface may be used.

38.5 The supporting surface mentioned in 38.4 is to consist of a layer of tongue-and-groove oak flooring mounted on two layers of 3/4-inch (18-mm) thick plywood. The oak flooring is to be 3/4- by 2-1/4-inch (18- by 57-mm). The assembly is to rest on a concrete floor or an equivalent nonresilient surface.

No Text on This Page

39 Thermal Degradation

39.1 A thermoset material used for a part of an appliance where risk of fire, electric shock or injury to persons is involved shall be resistant to thermal degradation at the maximum temperature to which it is exposed during normal use of the appliance. The thermal-aging characteristics of the material may be investigated by any one of the following procedures:

- a) The material shall have a temperature index, based on historical data or a long-term thermal aging program, described in the Standard for Polymeric Materials – Long Term Property Evaluations, UL 746B, which indicates acceptability for use at the temperature involved or
- b) The product shall be operated with the input voltage adjusted so that the part in question operates at the maximum temperature obtained during the normal temperature test. The test is to be conducted with all temperature controls by-passed for a period of 1000 h. There shall be no visible degradation of parts at the conclusion of the 1000 h.

40 Handle Securement Tests

40.1 General

40.1.1 A handle assembly shall not deteriorate so as to increase the risk of potential injury as a result of being subjected to the test described in 40.2.1 – 40.6.3. Three samples are to be subjected to each test unless otherwise specified in accordance with Figure 40.4.

40.2 Oven conditioning

40.2.1 Prior to conducting any of the tests in this section, three samples of a vessel and handle assembly incorporating thermoplastic parts shall be conditioned in a full-draft circulating-air oven maintained at the maximum handle temperature recorded during the normal temperature test or the maximum handle temperature reached on a nonheated vessel within 5 min after it is filled following the brew cycle. The samples are to remain in the oven for 168 h. Following the conditioning and after the samples have cooled to room temperature, the samples are to be tested in accordance with 40.3.1 – 40.6.3.

40.2.2 If the temperature of the handle assembly exceeds the maximum assigned temperature rating of the material during the normal temperature test, the test in 40.2.3 is to be conducted in lieu of the test in 40.2.1.

40.2.3 Three vessels with handle assemblies are to be placed in a full-draft circulating-air oven for a period of 240 hours maintained at the maximum temperature recorded on the handle during the Normal Temperature Test or at the maximum temperature reached on a non-heated vessel within five minutes after it is filled following the brew cycle. During this time period, the vessels are to be removed from the oven and allowed to cool for five separate one-hour periods, at intervals not less than 24 hours. The 240-hour period is actual in-oven time and does not include the cool-down periods. During each of the cool-down periods, the vessels are to be supported by the handle assembly in the intended manner while loaded with No. 7 or No. 7-1/2 shot having a weight of the maximum intended capacity of water. Following the conditioning and after the vessels have cooled to room temperature, the vessels are to be tested in accordance with 40.3.1 – 40.6.3.

40.3 Dishwashing

40.3.1 Following the test of 40.2.1, an immersible vessel incorporating thermoplastic parts shall be conditioned as follows to simulate dishwasher cleaning. It shall be immersed in a commercially available dishwasher detergent solution – 25 g/L of water – for 1 h 150°F. Following this, it is to be removed, kept at room temperature for 1 h, oven aged at 160°F for 1 h, cooled to room temperature for 1 h.

40.4 Flexing test

40.4.1 The three samples of the vessel are to be supported in the intended manner by the handle assembly while loaded with a mixture of water and gelatin having a weight equivalent to its maximum intended capacity of water. The test load is to be distributed such that the normal center of gravity is not changed. The handle assemblies are then to be flexed for 12,000 cycles in the normal plane of pouring, forward 45° from the vertical and backwards 45° from the vertical. Each cycle consists of tipping the vessel forward 45°, back to the vertical position, then back 45° and then forward to the vertical position. Following the above, the test is to be repeated for an additional 12,000 cycles with the flexing being performed from side to side, that is, 45° to the left and 45° to the right of the normal vertical position. The cycle rate is to be 6 – 8 cycles per minute.

40.5 Static load

40.5.1 Each vessel is then to be supported for 1 min in the intended manner by the handle assembly while loaded with a mixture of silica sand and water (80/20 percent by weight) having a weight equivalent to two times the weight of the maximum intended capacity of water. The lid is to be in place, but is not to be considered as part of the test weight. The test weight is to be distributed so that the normal center of gravity is not changed. The handle is to be gripped over a 2- to 4-inch (51- to 102-mm) wide gripping area (centered over the intended gripping area) for these tests.

40.6 Static force

40.6.1 A force equal to two times the force exerted by the maximum intended capacity of water is to be applied for 1 min to the handle at an angle perpendicular to the side of the handle and parallel to the bottom of the vessel at a point as close to the point of securement as possible. The vessel is to be prevented from rotating while the force is applied. The force is to be applied with a 1/2 inch (12.7 mm) diameter rod terminating in a hemispherical end. See Figure 40.1.

40.6.2 The test indicated in 40.6.1 is to be repeated with the force being applied in the same manner except that the point of application shall be such that the greatest torque is at the point of securement, or at two securement points for a "D" handle, see Figure 40.2.

Figure 40.1

Figure 40.1 revised April 30, 1998

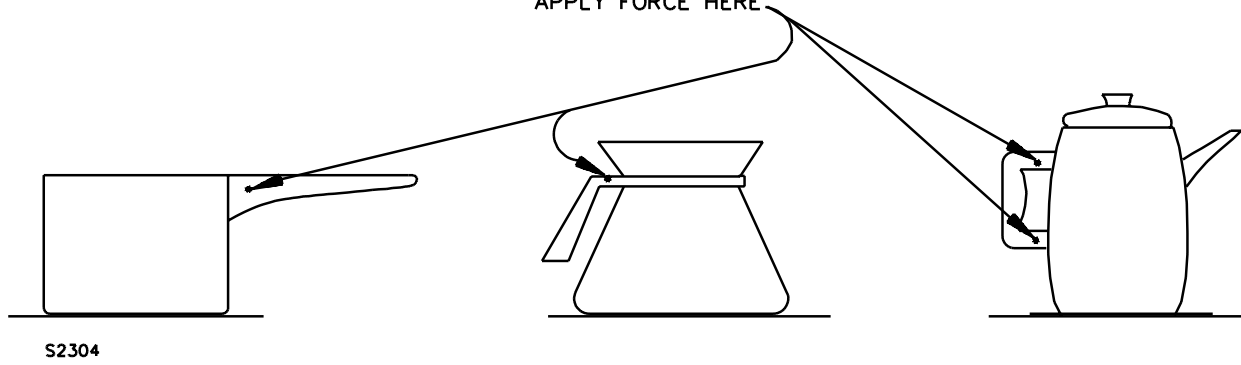
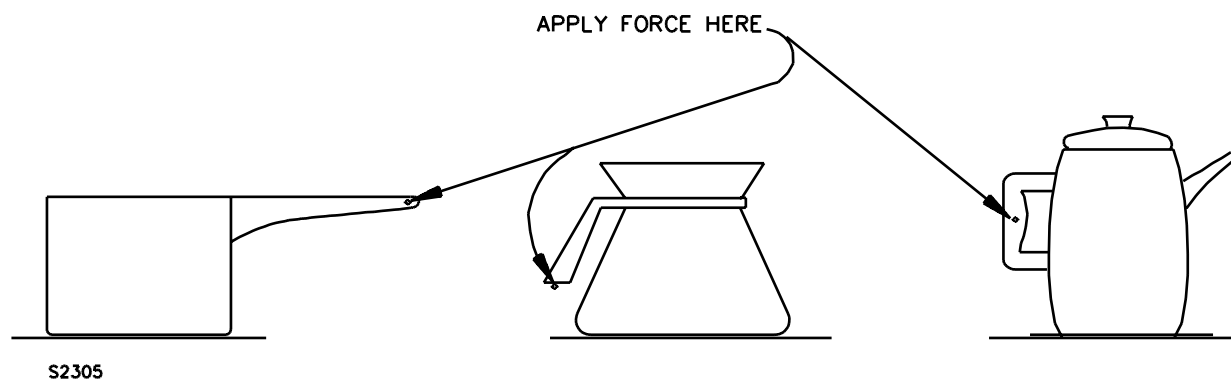
APPLY FORCE HERE

Figure 40.2

Figure 40.2 revised April 30, 1998



40.6.3 A force equal to two times the force exerted by the maximum intended capacity of water is to be applied for 1 min at the farthest extremity of the handle in a horizontal direction first pulling away from the vessel, and then repeated pushing toward the vessel. The vessel is held for each test. See Figure 40.3.

Exception: For a horizontal handle, the force is to be applied by first pulling up on the handle and then repeated, pushing down on the handle.

Figure 40.3

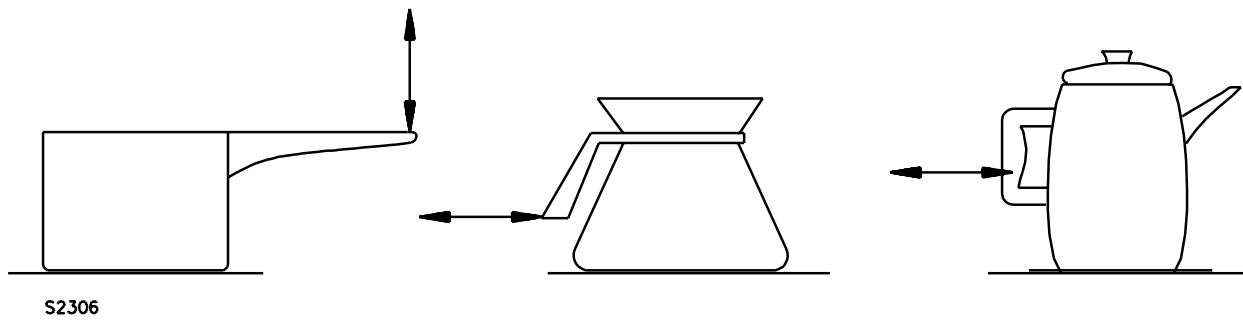
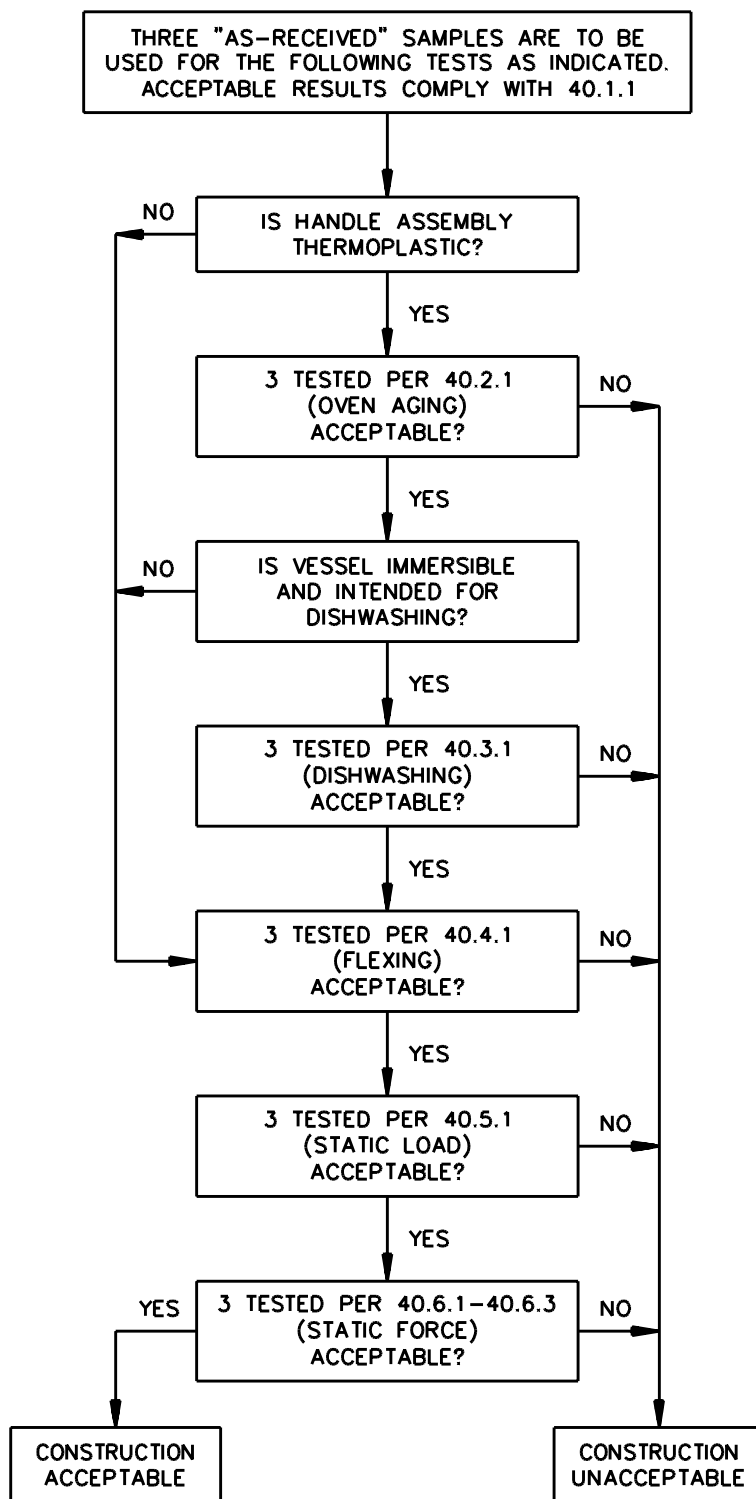


Figure 40.4
Handle strength test procedure

Figure 40.4 revised April 30, 1998



S2933C

41 Under-Cabinet and Wall Mounted Appliances-Impact Test

41.1 The impact test of 41.2 shall be conducted on all under-cabinet and wall mounted appliances without occurrence of any of the following conditions:

- a) Making live parts accessible to contact with the articulate probe, see 7.10 and 7.11.
- b) Producing any other condition that results in damage of the enclosure so as to adversely affect the function of any safety or constructional feature, such as thermostats, overload-protective devices or strain relief.
- c) Producing other conditions so that the appliance does not comply with the dielectric voltage-withstand requirements in Dielectric Voltage-Withstand Test, Section 35, after being subjected to the impact.
- d) Dislodging of the appliance or separable parts of the appliance.

41.2 A 1.5 ft-lbf (2.03 J) impact is to be performed on all exposed sections of the enclosure, while the unit is installed under a cabinet or on a wall. Each of three samples is to be subjected to one impact on each surface. The impact is to be imparted by swinging a 2-inch (50.8 mm) diameter steel sphere, weighing 1.18 lb (0.535 kg) from a height that will produce an impact of 1.5 ft-lbf (2.03 J).

Exception: Any glass surface need not be subjected to this test.

42 Loading Test

42.1 A loading test is to be performed on the mounting brackets of an under-cabinet or wall mounted appliance with the appliance mounted in accordance with the manufacturer's installation instructions, using the hardware and construction as described. A bracket shall not break, loosen, or pull out of the wall nor shall any portion of the unit attached to the mounting means be adversely affected as a result of this test.

42.2 The test load is to consist of the weight of the appliance plus three times the maximum normal load (food load, water, grounds, basket, and the like, based on cavity size and maximum recipe book weight recommendations). A gradually increasing force is to be applied to act vertically through the center of the gravity of the unit. The force is to be increased in a 5 to 10 s interval until the test load is applied to the mounting system and is to be sustained for a period of 1 min. For this test an under-cabinet unit is to be mounted on a wood board with a minimum thickness as specified by the manufacturer and a wall unit is to be mounted on 3/8 inch (4.8 mm) thick wall board.

42.3 If the mounting brackets are constructed of a thermoplastic material, they are to be conditioned for 7 h in an air circulating oven maintained at 70°C (158°F) or 10°C (18°F) higher than that measured during the normal temperature test, whichever is higher, prior to performing the loading test.

43 Abnormal Operation Tests

43.1 General

43.1.1 If the conditions of normal operation are not representative also of abnormal conditions likely to be obtained in actual service, an appliance shall not involve a risk of fire or electric shock when operated continuously under such abnormal conditions.

43.1.2 The appliance shall have its voltage selector switch set in any supply circuit voltage position being connected to any one of the rated supply circuits. The combination of selector settings and supply circuit to which the equipment is connected is to be that which develops the most severe operating conditions.

43.1.3 If provided, an externally operable input voltage selector is to be operated for 25 c with the appliance operating at the minimum rated voltage and for 25 c with the appliance at the maximum rated voltage. Each cycle consisting of moving the voltage selector to its alternate position and back at the rate of six cycles per minute with the voltage selector in each position for 5 s. The operating and temperature controls are to be set as to result in the most adverse operating conditions.

Exception: If an externally operable voltage selector switch interlocks with the power switch and cannot be operated with the power switch in the on position, the test procedure will be as described in 43.1.4.

No Text on This Page

43.1.4 For an externally operable voltage selector switch that interlocks with the power switch and cannot be operated with the power switch in the on position, the voltage selector is to be operated for 25 c each at the maximum and minimum voltages. Each cycle is to consist of the following steps:

- a) With the power switch in the off position, move the voltage selector to the alternate position;
- b) Turn the power switch on and operate the appliance for 5 s;
- c) Turn the power switch off;
- d) Move the voltage selector to the original position; and
- e) Turn the power switch on and operate the appliance for 5 s.

43.1.5 To determine whether a risk of fire or electric shock actually exists, a separate burnout or abnormal test is to be conducted with the appliance operating continuously until the ultimate result has been observed. Unless otherwise indicated, the test is to be conducted on one sample with the applied voltage, method of mounting, and thermostat connection in accordance with 33.1.10 – 33.1.18. Accessible metal parts, those that can be contacted by the probe in Figure 7.2, and metal parts accessible during user servicing are to be connected to ground through a 3-A fuse. In most cases, continuous operation for 7 to 8 h will be necessary to determine that the ultimate result has been observed.

43.1.6 An appliance is to be located as close to the walls of the test corner as the construction will permit. The test corner is also to be provided with a 12-inch (340-mm) simulated cabinet bottom, located 16 inches (400 mm) above the counter top. The cabinet bottom is to consist of a dull black-painted fir plywood 3/8 inch (9.5 mm) thick.

Exception No. 1: The test corner need not be used if temperatures obtained are not a factor affecting the result.

Exception No. 2: When an appliance is more than 16 inches (400 mm) high and not more than 22 inches (559 mm) high, the cabinet bottom is to be just over the appliance. When the appliance is more than 22 inches (559 mm) high, the cabinet bottom is to be omitted.

43.1.7 When operated under such abnormal conditions, an appliance is considered to involve a risk of fire if there is any emission of flame or molten metal (other than drops of melted solder), or if the operation of the appliance results in the glowing or flaming of combustible material upon which the appliance may be placed, or that may be adjacent to the appliance.

43.1.8 An appliance is considered to involve a risk of electric shock if the 3-A fuse connected from accessible metal parts of the appliance to ground opens during the test.

43.1.9 After having been subjected to an abnormal test, the appliance is considered to involve a risk of electric shock if the current measured through a 500 ohm resistor between an accessible part and ground is more than 5 mA. A solution of hard water (1/2 g of calcium sulphate $\text{CaSO}_4 \cdot 2\text{H}_2\text{O}$ per liter of distilled water) in an amount equal to the capacity of the container, is to be poured into the container and the current is to be measured as quickly as possible thereafter. Liquid need not be added if it is obviously apparent that the appliance will not hold liquid.

43.2 Specific test conditions

43.2.1 General

43.2.1.1 For most of the common types of heating appliances, standardized abnormal test conditions are given in 43.2.4.1 – 43.3.1.

43.2.2 Appliances with breakable exterior surfaces

43.2.2.1 If an appliance has an exterior surface of glass, ceramic, or comparably brittle material in or on which the heating element is mounted or that is an essential part of the enclosure of live parts, the material shall be capable of withstanding the stresses to be encountered in actual service.

43.2.2.2 Certain specific tests are described in 43.2.2.3 but other tests may be necessitated by the construction or intended operation of the appliance.

43.2.2.3 The glass or ceramic surface shall withstand without cracking or breaking the application of a cloth fully saturated with water (the hard water solution described in 43.1.9) at room temperature, with the appliance in the fully heated condition. The quantity of water involved shall be sufficient to wet the surface completely. The appliance shall then comply with the requirement in 31.1 in a repeat leakage current test, except that the test shall be discontinued when leakage current stabilizes.

43.2.3 Dry operation

43.2.3.1 The appliance shall be tested as follows, with all temperature controls or protective devices shunted out of the circuit, except as noted in 33.1.18.

- a) An appliance that incorporates a device to limit temperatures shall be tested in accordance with 43.2.3.3.
- b) An appliance that does not incorporate a device to limit temperatures shall be tested in accordance with 43.2.3.4.

43.2.3.2 If the appliance breaks, melts, or is otherwise damaged during the heating described in 43.2.3.3, 43.2.3.4 or 43.2.5.2 to the extent that it would be obvious to the user that the appliance is no longer useable and thereby likely to be discarded, the test is to be discontinued. The appliance is then to be tested for risk of electric shock in accordance with 43.1.9.

43.2.3.3 One sample of an appliance that incorporates a device to limit temperatures is to be operated dry for one hour. After one hour of operation, (or less if heating element burnout or other cease-to-operate condition occurs), the appliance shall be disconnected from the source of supply and immediately filled with 10 – 20°C (50 – 68°F) tap water, then emptied and wiped dry simulating a cleaning operation. If the appliance utilizes a detachable power-supply cord, the plug is to be removed and replaced on the pin terminals five times. The appliance is then to be half-filled with hard water and tested for risk of electric shock in accordance with 43.1.9. If the sample is still operable and the leakage current did not exceed 5.0 mA, the sample is to be emptied, let cool to room temperature and the entire test procedure repeated, until a maximum of five such operations has been completed. After the fifth operation, the sample shall also be subjected to the dielectric voltage-withstand test described in Dielectric Voltage-Withstand Test, Section 35.

43.2.3.4 Three samples of an appliance that does not incorporate a device to limit temperatures are to be tested in accordance with 43.2.3.3 except that one sample is to be operated dry for 5 min, the second sample for 15 min and the third sample for 30 min for each cycle rather than one hour.

43.2.3.5 The appliance is to be filled to normal capacity with liquid and saturated grounds or other media, and operated at 110 percent of the voltage as determined from 33.1.11. All automatic controls shall be shunted out of the circuit except as noted in 33.1.18. The result is not acceptable if the container is pressurized so as to spit liquid from any opening including the spout.

43.2.3.6 A handle assembly that is utilized to lift and tilt a vessel to dispense a liquid shall be tested in accordance with 43.2.3.1 while being supported by the handle. The handle is to be gripped with a 2-inch (51-mm) gripping area (centered over the intended gripping area) for this test. The handle assembly shall not loosen, break, soften, deform, warp or otherwise deteriorate so as to increase the risk of injury to persons. This test is not applicable to a carafe or other nonintegrally heated vessel.

43.2.4 Overfill

43.2.4.1 An appliance not intended to be immersed in water, shall not present a risk of electric shock after being subjected to the test described in 43.2.4.2.

43.2.4.2 To determine that an appliance complies with the requirement in 43.2.4.1 it is to be tested as follows:

- a) A detachable power-supply cord provided with the appliance is to be removed,
- b) The appliance is to be supported normally on a horizontal surface unless filling requires another position, and
- c) A liquid-level gauge, vent or other opening, and the pouring spout or lip are to be sealed or otherwise modified to induce a uniform overflow of liquid around the top perimeter of the appliance.

A hard water solution (see 43.1.9) is to be poured into the container through an orifice 3/8 inch (9.5 mm) in diameter. The appliance is to be first filled with the maximum amount of liquid the container will hold. An additional amount of the solution equal to 50 percent of the volume just mentioned [but not more than 1 pint (473 mL)] is then to be poured into the filled container. Any equivalent method which provides the same rate and amount of uniform flow of liquid around the top perimeter may be employed. Immediately following the test, the appliance is to be emptied, the exterior dried with a soft cloth to remove all surface moisture, including surface moisture from exposed terminal pins, refilled to the normal level and tested for risk of electric shock. To determine whether a risk of electric shock exists, the current is to be measured through a 500 ohm resistor between accessible parts and ground, with the appliance connected to a 120 V supply circuit. A risk of electric shock is considered to exist if the current exceeds 5.0 mA. The current is to be again measured with reverse polarity of the supply circuit.

43.2.5 Boil dry operation

43.2.5.1 An appliance shall not involve a risk of electric shock when operated as described in 43.2.5.2.

Exception: An appliance that incorporates a control that operates to prevent boiling of the liquid (such as the thermostat of a percolator) need not be tested.

43.2.5.2 A sample shall be filled with just enough water (hard-water solution described in 43.1.9) to cover the heating element. The appliance shall then be operated until all the water has been boiled off – or heating element burnout or other cease-to-operate condition occurs – at such time it shall be 3/4 filled with 10 – 20°C (50 – 68°F) hard water and tested for risk of electric shock in accordance with 43.1.9.

43.2.6 Gaskets and seals

43.2.6.1 An insulating washer, gasket, or the like used as a seal or barrier between uninsulated current-carrying parts and the liquid chamber of a liquid heating appliance shall be such that there is no leakage current of more than 0.5 mA between liquid in the appliance and ground after an appliance has been operated as described in 43.2.6.2.

43.2.6.2 The appliance is to be operated continuously for 168 h after having been filled with the liquid normally used in the appliance. Sufficient liquid is to be added from time to time to prevent the liquid chamber from becoming less than half full. The appliance is then to be subjected to a repeat leakage-current test (see 31.1) except that the test is to be discontinued when the leakage current stabilizes.

43.2.6.3 An insulating washer, gasket, or hose as described in 43.2.6.1 shall not show any visible signs of deterioration, such as cracking, deformation, and the like, after being conditioned in accordance with Table 43.1.

Table 43.1
Test for materials used for gaskets, seals, hoses, or the like

Temperature on component during normal temperature test	Conditioning procedure
60°C (140°F) or less	Air circulating convection oven for 70 hours at 100 ±1°C (212 ±2°F)
61 – 75°C (142 – 167°F)	Air circulating convection oven for 168 hours at 100 ±1°C (212 ±2°F)
76 – 90°C (169 – 194°F)	Air circulating convection oven for 168 hours at 121 ±1°C (250 ±2°F)
91 – 105°C (196 – 221°F)	Air circulating convection oven for 168 hours at 136 ±1°C (277 ±2°F)
Above 105°C (221°F)	Air circulating convection oven for 168 hours at 31.0°C (55.8°F) higher than normal use temperature

43.2.6.4 An identifiable gasket, seal, or similar protection shall be provided to reduce the risk of the entrance of water into wiring and electrical component spaces in products that are likely to be held under a tap-water faucet for filling or cleaning. Examples of these products are percolators, urns, hot pots, teapots and the like.

43.2.6.5 Where the gasket, seal or similar protection mentioned in 43.2.6.4 cannot be determined as providing the protection necessary to comply, the design shall be evaluated following the overfill test described in 43.2.6.6, in place of the overfill test described in 43.2.4.2.

43.2.6.6 The appliance is to be subjected to the overfill test described in 43.2.4.2 a total of ten times. Prior to the initial overfill test the appliance is to be subjected to one heating cycle. The tests are to be conducted over a period of 15 d. The time between the tests are to be not less than 24 h. Only one leakage current test and dielectric voltage-withstand test are to be performed, following the last overfill test.

43.3 Dual voltage appliances

43.3.1 In addition to the applicable test described in 43.2.3.1 – 43.2.6.6, a dual voltage appliance shall be subjected to the tests described in 43.1.6 – 43.1.8. These tests are subject to the test conditions described in 43.1.5 – 43.1.7 and to the acceptance criteria described in 43.1.9 – 43.2.2.2. There shall be no electrical or mechanical breakdown of the voltage selector switch.

44 Secondary Circuit Component Failure Test

44.1 If an appliance employs one or more rectifiers, transistors, or similar solid-state components in a secondary circuit, a risk of fire or electric shock shall not develop when the circuit between any two terminals of any such component is open-circuited or short-circuited. If the appliance employs a capacitor in combination with one or more of the above-mentioned components, a risk of fire or electric shock shall not develop when the capacitor is short-circuited. Only one of the simulated fault conditions described above is to be imposed at one time. See 44.2 – 44.5.

Exception: Components located on the secondary of a Class 2 transformer need not comply with these requirements.

44.2 If a semiconductor rectifier is employed, three appliances are to be tested with the rectifier terminals connected together. Three additional appliances are to be tested with the terminals of the electrolytic capacitor connected together.

44.3 Three complete tests are to be made under each of the conditions described in 44.2 using new components in each test. The appliance to be tested is to be connected as indicated in 43.1.5.

44.4 An unacceptable condition exists if flame is emitted from the overall enclosure of the appliance or if a permanently conductive path is established between live parts and exposed dead metal.

44.5 The tests described in 44.1 – 44.3 may be omitted if one or both of the following conditions exist:

- a) There is 10,000 ohms or more of additional series impedance in a circuit in which the voltage does not exceed 125 V.
- b) There is 20,000 ohms or more of additional series impedance in a circuit in which the voltage may be more than 125 but is no more than 250 V.

45 Automatic Controls Test

45.1 General

45.1.1 An automatic control for temperature regulating or temperature limiting shall be capable of performing successfully for 50 c of operation, when the appliance is connected to a supply circuit having a potential of 120 percent of the voltage specified in 33.1.11. There shall be neither electrical nor mechanical malfunction of the control, nor undue burning, pitting, or welding of the contacts.

45.1.2 In tests to determine an automatic control complies with the requirements in 45.1.1, the appliance is to be connected to a grounded supply circuit; the enclosure of the appliance, if of metal, is to be connected to ground through a 3-A fuse; and the control, if single-pole is to be connected in an ungrounded conductor of the circuit. The device is to be operated at the rate of 10 cycles per minute, except that a faster rate of operation may be employed if agreeable to all concerned. The performance is unacceptable if the fuse in the grounding connection opens during the test.

45.2 Endurance

45.2.1 Thermostats

45.2.1.1 A thermostat shall be capable of withstanding an endurance test which shall consist of the number of cycles indicated in Table 45.1. Unless it is specified that the test be made without load, the thermostat shall make and break the rated current of the appliance while connected to a circuit of rated voltage. There shall be neither electrical nor mechanical malfunction of the thermostat, nor undue burning, pitting, or welding of the contacts.

Table 45.1
Number of cycles of operation for endurance test

Type of thermostat	Automatically reset thermostat	Manually reset thermostat
Temperature regulating	A number of cycles equivalent to 1000 h of intended operation of the appliance but not less than 6000 c. However, the test may be omitted if, with the thermostat short-circuited, no temperature higher than the limits given in Table 33.1 are attained during the normal-temperature test of the appliance.	To be made the subject of special consideration.
Temperature-limiting	A number of cycles equivalent to 100 h of operation of the appliance under any condition which caused the thermostat to function, or 100,000 c, whichever is greater. However, the test may be omitted if, with the thermostat short-circuited, there is no evidence of risk of fire as described in 43.1.1 – 43.1.9 during the continuous abnormal operation of the appliance.	1000 c under load and 5000 c without load. However, the test may be omitted with the thermostat short-circuited, there is no evidence of risk of fire as described in 43.1.1 – 43.1.9 during continuous abnormal operation of the appliance.
Combination temperature-regulating and-limiting	100,000 c if, with the thermostat short-circuited, there is evidence of risk of fire as described in 43.1.1 – 43.1.9. If there is no evidence of risk or fire under this condition, the thermostat is to be tested as a temperature-regulating thermostat (see above).	To be made the subject of special consideration.

45.2.1.2 With reference to 45.2.1.1 and Table 45.1, thermostats are classified as follows:

- a) A temperature-regulating thermostat is one which functions only to regulate the temperature of the appliance under normal conditions of use, and whose malfunction would not result in a risk of fire.
- b) A temperature-limiting thermostat is one which functions only under conditions which produce abnormal temperatures. The malfunction of such a thermostat might or might not result in a risk of fire.
- c) A combination temperature-regulating and -limiting thermostat is one which functions to regulate the temperature of the heating appliance under normal conditions of use, and also serves to prevent a risk of fire which might result from conditions of abnormal operation of the appliance.

46 Permanence of Marking Tests

46.1 A required marking shall be molded, die-stamped, paint-stenciled, stamped or etched metal that is permanently secured, or indelibly stamped lettering on a pressure-sensitive label secured by adhesive that upon investigation is found to be acceptable for the application. Ordinary usage (including the likely exposure to weather and other ambient conditions), handling, storage, and the like of the equipment is to be considered in the determination of the acceptability of the application.

46.2 Unless it has been investigated and found to be acceptable for the application, a pressure-sensitive label or label that is secured by cement or adhesive shall comply with the adhesion requirements in Table 7.1 for indoor equipment, and Table 7.2 for outdoor equipment in the requirements for marking and labeling systems, UL 969.

46.3 Unless otherwise indicated, a required cautionary marking shall be located on a part that would require tools for removal or that cannot be removed without impairing the operation of the product.

MANUFACTURING AND PRODUCTION-LINE TESTS

47 Dielectric Voltage-Withstand Test

47.1 Each appliance shall withstand without an indication of unacceptable performance as a routine production-line test, the application of a potential between:

- a) The primary wiring, including connected components, and accessible metal parts that are likely to become energized, and
- b) Between primary wiring and accessible low voltage (42.4 V peak or less) metal parts, including terminals. The test potential shall be:
 - 1) 1200 V applied for 1 s or
 - 2) 1000 V applied for 1 min.

47.2 The appliance may be in a heated or unheated condition for the test.

47.3 The test shall be conducted with the appliance complete – fully assembled. It is not intended that the appliance be unwired, modified, or disassembled for the test.

Exception No. 1: A part, such as a snap cover or a friction-fit knob, that would interfere with performance of the test need not be in place.

Exception No. 2: The test may be performed before final assembly if such a test represents testing the complete appliance.

47.4 If the appliance employs a solid-state component that can be damaged by the test potential, the test on each appliance may be conducted before the component is electrically connected. In such a case, additional testing is to be made of a random sampling of each day's production with the circuitry rearranged to reduce the likelihood of damage to any solid-state component but retaining representative dielectric stress of the circuit.

47.5 The test equipment, when adjusted for production-line testing, is to produce an output voltage that is not less than the factory test value specified, nor is the magnitude of the test voltage to be greater than 120 percent of the specified test potential when the tester is used in each of the following conditions:

- a) If the test duration is one second, the output voltage is to be maintained within the specified range,
 - 1) When only a voltmeter having an input impedance of at least 2 megohms and a specimen of the product being tested are connected to the output terminals, and
 - 2) When a relatively high resistance is connected in parallel with the voltmeter and the product being tested, and the value of the resistance is gradually reduced to the point where an indication of unacceptable performance just occurs.
- b) If the test duration is one minute, the output voltage is to be maintained within the specified range, by manual or automatic means, throughout the one minute duration of the test or until there is an indication of unacceptable performance.

47.6 The specified control of the applied voltage, manual or automatic, shall be maintained under conditions of varying line voltage. Higher test potentials may be used if higher dielectric stress is not likely to adversely affect the insulating systems of the product.

47.7 In addition to the characteristics indicated in 47.5, the test equipment is to have the following features and characteristics:

- a) A means of indicating the test voltage that is applied to the product under test. This may be accomplished by sensing the voltage at the leads or by equivalent means.
- b) An output voltage that:
 - 1) Has a sinusoidal waveform,
 - 2) Has a frequency that is within the range of 40 – 70 Hz, and
 - 3) Has a peak value of the waveform that is not to be less than 1.3 and not more than 1.5 times the root-mean-square value.

c) A means of effectively indicating unacceptable performance. The indication is to be:

- 1) Auditory if it can be readily heard above the background noise level,
- 2) Visual if it commands the attention of the operator, or
- 3) A device that automatically rejects an unacceptable appliance.

If the indication of unacceptable performance is auditory or visual, the indication is to remain active and conspicuous until the test equipment is reset manually.

d) When the test equipment is adjusted to produce the test voltage and a resistance of 120,000 ohms is connected across the output, the test equipment is to indicate an unacceptable performance within 0.5 second. A resistance of more than 120,000 ohms may be used to produce an indication of unacceptable performance, if the manufacturer elects to use a tester having a higher sensitivity.

47.8 There is not to be any transient voltage applied to the appliance under test that results in the instantaneous voltage applied to the product exceeding 120 percent of the peak value of the test voltage that the manufacturer elects to use for this test. This requirement applies for the entire duration of the test, including the time that the voltage is first applied to the product and the time that the voltage is removed from the product.

47.9 During the test, a sufficient number of primary switching components shall be in the on position so that all primary circuitry will be stressed. Both sides of the primary circuit of the appliance are to be connected together to one terminal of the test equipment. The second equipment terminal is to be connected to accessible dead metal.

Exception: Resistive-type appliances and appliances utilizing motors, relays, coils or transformers, having circuitry not subject to excessive secondary build-up in case of indication of unacceptable performance during the test, may be tested with only one side of the primary circuit connected to the dielectric test equipment.

48 Polarization and Grounding Continuity Tests

48.1 Polarization test

48.1.1 Each appliance provided with a polarized attachment plug (2-wire plug with one blade wider than the other) shall be tested for electrical-continuity between the grounded supply-circuit conductor of the attachment plug (wide blade of a 2-wire plug) and the part of the appliance that is intended to be connected to the grounded supply-circuit conductor. If the continuity cannot be readily determined by visual inspection and component checking, an electrical-continuity test is to be made.

48.2 Continuity of grounding connection

48.2.1 Each cord-connected appliance having provision for grounding shall be tested, as a routine production-line test, to determine that grounding continuity exists between the ground blade of the attachment plug and the accessible dead metal parts of the appliance that are likely to become energized.

48.2.2 Only a single test need be conducted if the accessible metal selected is conductively connected by design to all other accessible metal.

48.3 Electrical indicating device

48.3.1 Any indicating device, such as an ohmmeter, a battery and buzzer combination, or the like, may be used to determine compliance with the tests described in 48.1.1 – 48.2.2.

RATINGS

49 Details

49.1 A heating appliance shall be rated in amperes, volt-amperes, or watts, and also in volts, and may be rated for alternating current only. The rating shall include the frequency if necessary because of control devices.

MARKINGS

50 Details

50.1 A warning or caution marking shall comply with all of the following requirements:

- a) The marking shall be permanently attached.
- b) The marking shall not be attached to parts removable by hand.
- c) The marking shall be attached to parts that cannot be removed without impairing the operation of the appliance or left off the appliance without being readily apparent.
- d) The marking shall have lettering that complies with the following requirements:
 - 1) The precautionary signal word (such as "DANGER", "WARNING", OR "CAUTION") shall be in letters not less than 3/32 inch (2.4 mm) high.
 - 2) If contrasting color is used, lettering other than signal words can be a minimum of 1/16 inch (1.6 mm) high.

50.2 All other markings required in this section shall be such that the marking is clear and legible under conditions of intended use of the appliance.

50.3 An appliance shall be legibly and permanently marked, with:

- a) The manufacturer's name, trade name, trademark, or other descriptive marking by which the organization responsible for the product may be identified;
- b) The date or other dating period of manufacture not exceeding any three consecutive months, which may be abbreviated or in a nationally accepted conventional code, or, in a code affirmed by the manufacturer;
- c) A distinctive (catalog) (model) number or the equivalent; and
- d) The electrical rating.

A date code repetition time cycle shall not be less than 10 years.

50.4 An appliance shall be marked, where readily-visible, to indicate that the appliance is intended for household type usage, such as, "Household Use Only", "Household Type", and the like. Lettering shall be not less than 3/32 inch (2.4 mm) high.

50.5 If a manufacturer produces or assembles appliances at more than one factory, each finished appliance shall have a distinctive marking – which may be in code – by which it may be identified as the product of a particular factory.

50.6 If the construction of an appliance contemplates disassembly by means of a tool for the purpose of cleaning or similar servicing by the user (including replacement of a thermal cutoff) and, if such disassembly involves the exposure of persons to unintentional contact with any normally enclosed or protected live part, the appliance shall be plainly marked with a warning that such servicing should be done only while the appliance is disconnected from the supply circuit. See also 7.13.

50.7 An appliance with an attached cord or detachable power-supply cord 4-1/2 ft (1.4 m) or longer in length shall be provided with specific instructions, which are not part of Important Safeguards, that state: "To reduce the risk of injury, do not drape cord over the counter top or table top where it can be pulled on by children or tripped over unintentionally" or an equivalent wording.

50.8 An appliance with an attached cord or detachable power-supply cord less than 4-1/2 ft (1.4 m) in length shall be provided with instructions, which are not part of Important Safeguards, that include the following information:

- a) A short power-supply cord (or detachable power-supply cord) is to be provided to reduce risks resulting from becoming entangled in or tripping over a longer cord.
- b) Longer detachable power-supply cords or extension cords are available and may be used if care is exercised in their use.
- c) If a long detachable power-supply cord or extension cord is used,
 - 1) The marked electrical rating of the detachable power-supply cord or extension cord should be at least as great as the electrical rating of the appliance,
 - 2) If the appliance is of the grounded type, the extension cord should be a grounding-type 3-wire cord, and
 - 3) The longer cord should be arranged so that it will not drape over the counter top or table top where it can be pulled on by children or tripped over.

50.9 An appliance that is likely to be lifted and handled for cleaning purposes and has not been subjected to the Immersion Tests, in accordance with 33.1.4 and 34.3 shall be marked "Do not immerse in water" or with an equivalent wording. If the appliance is intended for partial immersion but not for complete immersion, it shall be marked "Do not immerse beyond this point" or with an equivalent wording to show the point beyond which it should not be immersed.

50.9 revised January 8, 1999

50.10 An appliance that utilizes a detachable power-supply cord shall be provided with:

- a) The appropriate detachable power-supply cord as indicated in Supply Connections, Section 11, or
- b) Instructions that:
 - 1) Advise the consumer that the appropriate detachable power-supply cord is not provided, and
 - 2) Specify which detachable power-supply cord or cords are appropriate. If long and short detachable power-supply cords are available, the instructions shall include information regarding the problems attendant with each.

50.11 The instructions in 50.10(b) shall be marked on the outer packaging material of the product, and in the instruction manual provided with the appliance.

Exception: The outer packaging material alone may carry the information from the instructions in 50.10(b) provided that the instruction manual supplied with the appliance contains a reference to the location of the information.

50.12 If a specific spacing between a cord-connected wall or an under-cabinet mounted appliance and an adjacent surface is necessary so that temperatures higher than 90°C (194°F) are not obtained when the appliance is operated as intended, the appliance shall be marked "Do not install closer than ____ inches (____ mm) to a (vertical, horizontal, and the like) surface" or the equivalent. The value of the spacing to be used in the statement or the diagram shall not be less than that necessary so that temperatures higher than 90°C (194°F) are not obtained on the wall when the appliance is tested in the corner as described in 33.1.15. The statement or the diagram shall be legible and located so that it will be clearly visible during installation.

50.13 An under-cabinet or wall mounted appliance shall be permanently marked with the following or equivalent "CAUTION – To reduce the risk of fire do not place any heating or cooking appliance beneath this unit". The marking is to be in lettering minimum 3/32 inch (2.4 mm) high, on the front of the appliance, or the front leading edge of the mounting bracket and shall be visible after the appliance is mounted. The lettering is to be on a contrasting background, or the letters are to be raised, or the equivalent so that the marking is readily readable.

51 Carton Marking

51.1 A carton (individual marketing container) for an appliance shall be marked to indicate that the appliance is intended for household type usage, such as, "Household Use Only", "Household Type", and the like. The marking shall:

- a) Be located on at least one outside surface and
- b) Appear in lettering not less than the height specified in Table 51.1.

Table 51.1
Lettering height

Smallest dimension of the carton panel to be marked in inches (mm)		Minimum height of lettering in inches (mm)
More than	Less than or equal to	
0	6 (152)	1/8 (3.2)
6 (152)	10 (254)	3/16 (4.8)
10 (254)	—	1/4 (6.4)

INSTRUCTION MANUAL

52 General

52.1 An instruction manual or the equivalent shall be provided with the appliance. The manual shall specifically warn the user against each potential risk and state the precautions that should be taken to guard against each risk. The safety instructions shall be a permanent part of the manual but separated in format from the other instructions, and shall appear before the operating instructions in the manual.

52.2 The instruction manual shall include instructions or illustrations to identify important safety features.

52.3 The height of lettering in the text and illustrations of the safety instructions shall be as follows:

- a) Upper case letters shall be not less than 1/12 inch (2.1 mm) in height;
- b) Lower case letters shall be not less than 1/16 inch (1.6 mm) in height;
- c) The phrases "IMPORTANT SAFEGUARDS" and "SAVE THESE INSTRUCTIONS" shall be in letters no less than 3/16 inch (4.8 mm) in height.

52.4 The instruction manual shall include the safety instructions in All Appliances, Section 53 and the appropriate text from Specific Appliances, Section 54.

52.5 Unless otherwise indicated, the text of the instructions shall be verbatim to, or in equally definitive terminology as All Appliances, Section 53, and Specific Appliances, Section 54, except where specific conflict exists in the application of the text to a product or where the risk alluded to has been reduced. The items may be numbered, and the phrases "Read all Instructions" and "Save these Instructions" shall be first and last, respectively, in a list of items. Other important and safety instruction items considered appropriate by the manufacturer may be inserted.

52.6 For a dual voltage rated appliance, procedures to be followed in changing the voltage selector, if provided and providing the correct supply connection means for each voltage setting shall be provided. In addition, the following wording or equivalent shall be provided: "For use in the U.S.A., the voltage selector switch should be placed in the 120 V position. For use in several countries overseas, the voltage selector may need to be placed in the 240 V position. Confirm the voltage available at each overseas location before using the appliance. For connection to a 240 V supply, use an attachment plug adapter of the proper configuration for the power supply receptacle."

52.7 An appliance provided with a 2-wire polarized attachment plug shall include the following or equivalent wording: "This appliance has a polarized plug (one blade is wider than the other). To reduce the risk of electric shock, this plug is intended to fit into a polarized outlet only one way. If the plug does not fit fully into the outlet, reverse the plug. If it still does not fit, contact a qualified electrician. Do not attempt to modify the plug in any way."

53 All Appliances

53.1 The following applies to all appliances:

IMPORTANT SAFEGUARDS

When using electrical appliances, basic safety precautions should always be followed, including the following:

1. Read all Instructions.
2. Do not touch hot surfaces. Use handles or knobs.
3. To protect against fire, electric shock and injury to persons do not immerse cord, plugs, or (state specific part or parts in question) in water or other liquid.
4. Close supervision is necessary when any appliance is used by or near children.
5. Unplug from outlet when not in use and before cleaning. Allow to cool before putting on or taking off parts, and before cleaning the appliance.
6. Do not operate any appliance with a damaged cord or plug or after the appliance malfunctions, or has been damaged in any manner. Return appliance to the nearest authorized service facility for examination, repair or adjustment.
7. The use of accessory attachments not recommended by the appliance manufacturer may result in fire, electric shock or injury to persons.
8. Do not use outdoors (this item may be omitted if the product is specifically designed for outdoor use).
9. Do not let cord hang over edge of table or counter, or touch hot surfaces.
10. Do not place on or near a hot gas or electric burner, or in a heated oven.
11. Always attach plug to appliance first, then plug cord into the wall outlet. To disconnect, turn any control to "off," then remove plug from wall outlet.
12. Do not use appliance for other than intended use.
13. Save these Instructions.

54 Specific Appliances

54.1 Coffee makers, liquid heaters

1. (Special instructions covering lid placement and removal. Wording may vary.)
2. Scalding may occur if the lid is removed during the brewing cycles.

54.2 Appliances with detachable handles

1. Be sure that handles are assembled and fastened properly.
2. (The manufacturer shall supply explicit instructions detailing the proper assembly of the handles.)
3. (The manufacturer shall explain how improper assembly of the handles can be determined.)

Exception: Items 2 and 3 may be located in any part of the instruction manual provided that the Important Safeguards state "See instructions regarding Handles on Page ____" or the equivalent wording.

54.3 Under cabinet and wall mounted appliances

- a) To reduce the risk of fire, do not place any heating or cooking appliance beneath the appliance.
- b) To reduce the risk of fire, do not mount unit over or near any portion of a heating or cooking appliance.
- c) To reduce the risk of electric shock, do not mount over a sink.
- d) To reduce the risk of fire, do not store anything directly on top of the appliance surface when the appliance is in operation.

54.4 A cautionary marking that is required to be on an appliance shall be repeated in its entirety or with an equivalent wording in the instruction manual. The marking may be included in the Important Safeguards.

54.5 Dual voltage rated appliances

1. Be sure dual voltage selector, if provided, is in correct voltage position before operating. Before plugging in, read the information about the dual voltage contained in instruction section of this manual.
2. "This appliance was set at the factory to be operated at ____ V. Refer to operating instructions section of this manual for conversion to ____ V operation" or equivalent. The blanks are to be filled in with the appropriate voltage information.

Exception: This construction does not apply if an appliance operates over a range of voltages and requires no adjustment by the user, such as an appliance that employs a positive temperature coefficient (PTC) heating element intended for use over a range of voltages and requiring no adjustment by the user.

55 User Maintenance

55.1 The instruction manual shall include appropriate instructions and caution statements for cleaning, user-maintenance (such as lubrication or nonlubrication) operations recommended by the manufacturer, and shall warn a user that any other servicing should be performed by an authorized service representative. The manual or other literature packaged with the product shall also indicate that the product is for household use.

55.2 Instructions for mounting an under-cabinet or wall mounted appliance shall be provided. The actual instructions shall be located on the appliance, or in the literature packed with the appliance. The actual instructions shall not be in the Important Safeguards, however, there may be a reference to them in the Important Safeguards. (Such as "Wall or under-the-cabinet mounting should follow the directions in the installation instructions").

SUPPLEMENT SA - HOUSEHOLD ELECTRIC DRIP-TYPE COFFEE MAKERS AND SIMILAR DRIP-TYPE BREWING APPLIANCES

SA1 Scope

SA1.1 The requirements in this supplement cover household electric drip-type coffee makers and other similar drip-type brewing appliances that are to be cord-connected to a nominal 120 V supply in accordance with the National Electrical Code. These requirements are in addition to or modify the applicable requirements in Sections 1 – 55.

SA1.2 The appliances covered by this standard are automatic (temperature-regulated) and are used to heat water to a temperature greater than 46°C (115°F) as part of the intended brewing function. The coffee or other beverage brewed by these appliances are dispensed automatically or manually.

SA1.3 In the text of this supplement, reference to drip-type coffee makers is to be understood to apply to all drip-type appliances covered by this supplement. Reference to containers is to be understood to apply to the carafe or other container provided as part of the appliance to hold the brewed beverage.

SA2 Assembly

SA2.1 A drip-type coffee maker carafe shall be completely assembled before shipping and not require any assembly by the user.

SA3 Corrosion Protection

SA3.1 Iron, steel or aluminum parts shall be protected against corrosion as determined by compliance with SA12.3 and SA12.4 where deterioration would increase the risk of fire or electric shock.

SA3.2 The effects of severe humidity and moisture resulting from the test in Operation Degradation, Section SA12, and the humidity conditioning test in Leakage Current as a Result of Moisture, Section SA15, shall be evaluated. There shall be no visible degradation that would result eventually in unacceptable performance of the appliance.

SA4 Supply Connections

SA4.1 The length of an attached flexible cord or a detachable power supply cord provided with an under-cabinet or wall-mounted drip-type coffee maker shall be minimum 3 ft (0.9 m) and maximum 4.5 ft (1.4 m) long.

Exception: The cord length may be a maximum of 7.0 ft (2.1 m) if a means is provided for storing the excess length of cord.

SA5 Gaskets and Seals

SA5.1 An identifiable gasket, seal, or similar protection shall be provided to reduce the risk of the entrance of water and steam into wiring and electrical component spaces as determined by examination following the test in Operation Degradation, Section SA12.

SA5.2 Where the gasket, seal or similar protection mentioned in SA5.1 cannot be determined as providing the protection necessary to comply, the design shall be evaluated following the test in Operation Degradation, Section SA12.

SA6 Water Connections

SA6.1 Each water connection of elastomeric-type tubing whose failure could result in an increase in the risk of fire or electric shock shall be secured by an adhesive which meets the requirements in the Adhesives – Specialized Applications, Section 69 of UL 746C, a clamp, or friction alone, and shall comply with one of the following:

- a) A means of retaining the elastomeric-type tubing at a water connection that can be subjected to increased pressures, is acceptable if there is no water leakage as the result of the hydrostatic pressure test described in SA6.2 or SA6.5. If the elastomeric-type tubing is secured by friction alone, it shall additionally comply with the elongation and tensile strength properties test described in SA6.4.
- b) A means of retaining the elastomeric-type tubing at a water connection that can only be subjected to the normal head pressure by its position, is acceptable if there is no water leakage as the result of the hydrostatic pressure test in SA6.3 or SA6.5. If the elastomeric-type tubing is secured by friction alone, it shall additionally comply with the elongation and tensile strength properties test in SA6.4.

SA6.2 One drip-type coffee maker with water connections, as described in SA6.1(a), is to be subjected to a hydrostatic-pressure test. The coffee maker is to be filled with water so as to exclude air and is to be connected to a hydraulic pump. The pressure is to be raised gradually to a gauge pressure of 15 psi (103 kPa) and held at that value for 1 minute. The results are not acceptable if the water connections of the coffee maker burst or leak.

SA6.3 One drip-type coffee maker with water connections, as described in SA6.1(b), is to be subjected to a hydrostatic pressure test. The coffee maker is to be filled with water so as to exclude air and is to be connected to a hydraulic pump. The pressure is to be raised gradually to a gauge pressure equivalent to 10 times the maximum head pressure that the connection would be subjected to at overflow conditions, and held at that value for 1 minute. The results are not acceptable if the water connections of the coffee maker burst or leak.

SA6.4 Three samples of the elastomeric-type material used for a water connection that is secured by friction alone are to be tested for tensile strength and elongation. Three additional samples are to be artificially aged for 168 h in water maintained at 100°C (212°F). Following the aging, the samples are to be tested for tensile strength and elongation. The results are acceptable if the values following aging are at least 75 percent of the original values recorded on the unaged samples.

SA6.5 At the manufacturer's option, and as a substitute for the tests described in SA6.2 and SA6.3, three drip-type coffee makers with water connections as described in SA6.1 are to be subjected to a blocked operations test. The outlet tube of each coffee maker is to be blocked. The coffee makers are then to be filled with water and operated for a period of 1 hour. The results are not acceptable if the water connections of any of the three coffee makers burst or leak.

SA7 Thermal Conductivity

SA7.1 The assembly of a thermostat or other control that is dependent upon heat transfer through a thermal bridge or from the surface on which the control is mounted for proper operation, shall be constructed to reduce the risk of the following:

- a) Loosening of the control or bridge due to corrosion or thermal cycling, and
- b) Change in the properties of the thermal bridge or surface materials from electrolytic action due to use of dissimilar metals in a wet or moist environment, metal fatigue, or corrosion.

SA7.2 Compliance with the requirements in SA7.1 is to be determined following the test in Operation Degradation, Section SA12.

SA8 Grounding

SA8.1 A conductive connection between separate metal parts (accessible and inaccessible) in a drip-type coffee maker that has no provision for grounding shall be provided only if needed for functional purposes.

SA9 Operating Controls

SA9.1 An operating control device shall have a current and voltage rating not less than that of the circuit (load) it controls. The temperature rating of the materials used in such a device shall not be exceeded during the normal operation test unless the requirement for transient temperatures mentioned in SA14.1 apply.

SA9.2 A manual operating control, such as a switch, shall be provided to turn a drip-type coffee maker off when not in use.

Exception No. 1: A drip-type coffee maker with an automatic shutoff manual-reset operating control that operates in 5 min or less after energization of the coffee maker is acceptable.

Exception No. 2: A drip-type automatic coffee maker with an automatic shutoff manual reset operating control that operates in more than 5 min after energization need not be provided with an additional manual on-off control if the product complies with all of the following:

- a) No keep warm feature after brewing is provided.*
- b) Automatic operation of the manual reset system will cause disconnection of all ungrounded conductors from the supply to all heating assemblies at the end of one brewing cycle.*
- c) The manual reset operating control shall be trip free; that is, the automatic tripping shall be independent of the manipulation or position of the reset button, handle, lever, or the like. A manual reset control designated type M1 or M2 in accordance with the Standard for Temperature-Indicating and -Regulating Equipment, UL 873, is considered to comply with these requirements.*

d) *The manual reset operating control shall not reset automatically as a result of changes in environmental temperature at temperatures above minus 35°C (minus 31°F).*

e) *The manual reset operating control shall be capable of withstanding an endurance test consisting of 6000 c under load.*

SA9.3 The operating control mentioned in SA9.2 shall disconnect or cause disconnection of the ungrounded conductor from the supply to the heating assembly. When the ungrounded conductor cannot be identified, such as with products provided with a nonpolarized attachment plug, the control is to be of a double-pole type to open both circuit conductors.

Exception: If the warming plate is the only exposed metal part and is coated with an acceptable thickness of insulating material or isolated (not likely to become energized), the operating control need not disconnect the ungrounded conductor.

SA9.4 In a drip-type coffee maker provided with a polarized attachment plug, all additional operating controls with single-pole switching capability shall be wired in the ungrounded conductor.

Exception: See SA11.3.4.

SA10 Power-On Indicator

SA10.1 A drip-type coffee maker shall be provided with a power-on indicator that is readily visible and distinguishable from the off position.

Exception: A drip-type coffee maker with an automatic shutoff manual-reset operating control that operates in 5 min or less need not be provided with a power-on indicator.

SA10.2 The power-on indicator shall be significantly different from any indicator that may be used to indicate "off" on the product. Indicators, such as an illuminated switch, pilot light and colored flag, are means of complying with SA10.1. An ordinary on-off position marking is unacceptable.

SA11 Temperature Controls

SA11.1 General

SA11.1.1 A separate temperature limiting-type device is required only if the short-circuiting of a temperature-regulating control during abnormal operation (see Abnormal Operation, Section SA19) increases the risk of fire or electric shock. A single combination regulating-limiting control is unacceptable for this purpose.

SA11.1.2 Glossary

SA11.1.2.1 Set-point Temperature Rating (T_{s-p})— The temperature at which the thermostat's electrical load switching contacts change state upon temperature rise.

Added SA11.1.2.1 effective May 3, 2002

SA11.1.2.2 Maximum Normal Use Temperature Rating (T_{max})— The maximum temperature permitted on the thermostat's sensing surface during normal operation of the coffee maker. This temperature is equal to or greater than T_{s-p} .

Added SA11.1.2.2 effective May 3, 2002

SA11.1.2.3 Maximum Dry Operation Temperature Rating (T_{dry})— The maximum temperature permitted on the thermostat's sensing surface during abnormal (dry) operation of the coffee maker. This temperature is equal to or greater than T_{max} .

Added SA11.1.2.3 effective May 3, 2002

SA11.2 Temperature regulating

SA11.2.1 An automatic reset temperature-regulating thermostat that operates more than once during a complete cycle of brewing and warming shall comply with the applicable requirements for drip-type coffee maker thermostats in the Standard for Temperature-Indicating and -Regulating Equipment, UL 873.

SA11.2.2 An automatic reset temperature-regulating thermostat that operates only once during a complete brewing cycle and does not cycle in the keep warm mode shall comply with the applicable requirements in the Standard for Temperature-Indicating and -Regulating Equipment, UL 873 and be tested for 100,000 c at rated current and voltage.

SA11.2.3 The insulating material of a temperature regulating control shall have a Comparative Tracking Index of 175 or more. The Comparative Tracking Index (CTI) is referenced in the Standard for Polymeric Materials – Use in Electrical Equipment Evaluations, UL 746C.

SA11.2.3 revised January 8, 1999

SA11.3 Limiting-type devices

SA11.3.1 A limiting-type device shall consist of one of the following:

- a) A single thermal cutoff with an established T_{H-100} rating (which includes having a Conductive Heat (CH) rating) as described in the Standard for Thermal Cutoffs for Use in Electrical Appliances and Components, UL 1020, and as tested per SA14.8 and SA14.10;
- b) Two thermal cutoffs such that one of the following conditions is met:
 - 1) Each of the thermal cutoffs has a Conductive Heat (CH) rating as described in the Standard for Thermal Cutoffs for Use in Electrical Appliances and Components, UL 1020; or
 - 2) One thermal cutoff has a Conductive Heat (CH) rating:
 - i) and temperature on the stationary contact lead of the thermal cutoff without a CH rating is greater than or equal to the temperature on its case, as tested per SA14.10, or
 - ii) the CH rated thermal cutoff has a set-point temperature equal to or higher than the thermal cutoff without a CH rating; or
 - 3) The temperature on the stationary contact lead of both thermal cutoffs without a CH rating is greater than or equal to the temperature on their respective cases as tested per SA14.10.
- c) A single-operation thermostat; or
- d) A manual-reset thermostat that is inaccessible to the user without the use of tools.

Exception: A drip-type coffee maker that does not include a keep warm feature, and is provided with an automatic shut-off manual reset operating control (see Operating Controls, Section SA9) need only be provided with a single thermal cutoff. The thermal cutoff need not have a T_{H-100} or a Conductive Heat (CH) rating.

SA11.3.1 revised May 4, 2001

SA11.3.2 A single-operation thermostat or a manual-reset thermostat that is provided as the thermal limiting device shall comply with the applicable requirements in the Standard for Temperature-Indicating and -Regulating Equipment, UL 873 for limiting controls.

SA11.3.3 A thermal cutoff shall comply with the applicable requirements in the Standard for Thermal Cutoffs for Use in Electrical Appliances and Components, UL 1020.

SA11.3.4 If a grounding-type attachment plug is provided or the enclosure of the drip-type coffee maker has metal parts that are likely to become grounded, such as a metal bottom with bumped-out metal feet, the limiting-type device shall be located in the ungrounded supply conductor (if it can be identified) and the temperature-regulating control shall be in the other conductor. If the ungrounded supply conductor cannot be identified, the limiting-type device shall be located in one supply conductor and the temperature-regulating control shall be located in the other supply conductor.

SA12 Operation Degradation

SA12.1 A drip-type coffee maker shall be operated to represent all of the intended functions in accordance with the Use and Care Literature provided with the coffee maker. Such operation shall not result in an electrical or mechanical condition that might impair compliance with the requirements in the Standard.

SA12.2 To determine compliance with SA12.1, three samples are each to be operated for 100 c of normal use. Each cycle is to simulate making a full container of brew followed by a keep-warm period of 30 min. The first 80 c are to be conducted using water only, without coffee or other brewing material. The remaining 20 c are to be conducted using water and fresh coffee or other brewing material of a type recommended by the manufacturer. Each cycle is to be conducted so as to rapidly follow the previous cycle, unless the manufacturer's operating instructions indicate some other acceptable procedure is to be followed. The water used shall be a solution of 1/4 g of sodium chloride per liter of distilled water or water having an equivalent conductivity at 25°C. If necessary, the test samples may be cleaned between cycles in accordance with the manufacturer's instructions. The basket and filter are to be in place for all cycles.

Exception: The 30-min keep-warm period may be omitted if the drip-type coffee maker does not incorporate a keep-warm mode.

SA12.3 Following the 100 c of operation, each sample shall comply with:

- a) The leakage-current test described in 31.1,
- b) Overfill test described in SA19.4.1.1, and
- c) The dielectric voltage-withstand test described in 35.1. Each sample is then to be disassembled and examined. There shall be no visible indication of corrosion.

SA12.4 If applicable, after the 100 c of operation, each sample of a drip-type coffee maker with a thermal bridge shall also be examined for compliance with SA7.1. One sample shall acceptably complete the dry-operation test described in SA19.3.4. There shall be no deterioration of the thermal bridge that could increase the risk of fire or electric shock after dry operation.

SA13 Leakage Current

SA13.1 The leakage current, when tested in accordance with 31.3 – 31.7, shall not be more than 0.5 mA.

Exception: The leakage current of an appliance incorporating a sheath type heating element shall not exceed 2.5 mA during the first 5 minutes after reaching the leakage current limit of 0.5 mA or 0.75 mA, as applicable, and at the end of this time, the leakage current shall be not more than the 0.5 mA or 0.75 mA limit as applicable – the leakage current is to be monitored during heat-up and cool-down.

SA14 Normal Temperature

SA14.1 The initial temperature transients may be in excess of the values shown in Table 33.1 if the duration and extent of the excursion do not result in risk of fire or electric shock, and do not result in changes of the properties of materials to the extent that risk of fire or electric shock results. A transient temperature rise not exceeding the maximum temperature rise specified in Table 33.1 by more than 20 percent is acceptable.

SA14.2 A limiting-type control shall not operate during the normal temperature test.

SA14.3 A drip-type coffee maker is to be operated for 5 c of actual brewing. At the beginning of each cycle, the sample is to be filled with the intended amount of water. The water temperature is not to be higher than room temperature. The cycle is considered as having ended when all brew is delivered to the container. The time interval between cycles is to be:

- a) The minimum time necessary for refilling the reservoir and brew basket, or
- b) of s for the first two refills and 3 min for the second two refills, whichever is longer.

Temperatures are to be measured throughout the 5 c, and also when a drip-type coffee maker has subsequently operated at low heat, when a keep warm mode is provided, until temperatures have become stabilized. If a separate switch is provided to de-energize the brewing element or warming element, it is to be left in the on position for all phases of the test. During operation of the drip-type coffee maker in the low-heat mode, temperatures are to be measured under the following conditions in the sequence given below:

- 1) Container full, resting on warmer surface.
- 2) Container empty, resting on warmer surface.
- 3) Container removed.

SA14.4 The drip-type coffee maker is also to be tested in accordance with any operating procedure recommended in the manufacturer's instructions that could result in temperatures higher than those attained while conducting the test described in SA14.3.

SA14.5 A counter-top drip-type coffee maker is to be supported on a softwood surface painted flat black.

SA14.6 A wall- or under-cabinet mounted drip-type coffee maker is to be mounted on one wall or cabinet bottom of a test corner consisting of dull black-painted fir plywood not less than 3/8 inch (9.5 mm) thick, having such a width and height that the walls extend not less than 2 ft (0.61 m) beyond the physical limits of the drip-type coffee maker. The vertical walls are to meet at a right angle. The sample is to be placed as close to the corner wall as the construction will permit, and an under-cabinet appliance is to be in contact with the rear wall while a wall-mounted drip-type coffee maker is to be in contact with either the cabinet bottom of the counter, whichever results in the highest temperature. The cabinet bottom is to be 12 inches (340 mm) deep, located 16 inches (400 mm) above the counter top. The surface beneath the unit is to be softwood covered with a double layer of white tissue paper. The maximum allowable temperature on supporting and adjacent surfaces is 90°C (194°F).

SA14.7 The temperature of a regulating thermostat's sensing surface shall not exceed its maximum normal use temperature rating, T_{\max} , as defined in SA11.1.2.2 during normal operation of the coffee maker.

Revised SA14.7 effective May 3, 2002

SA14.8 The sensing surface of a thermal cutoff as defined in SA11.3.1 (a) shall not exceed 90% of its established T_{H-100} temperature (stated in degrees centigrade) during normal operation of the coffee maker.

SA14.8 revised May 4, 2001

SA14.9 To determine compliance with SA14.7, thermocouples are to be secured at the periphery of the regulating thermostat's surface that is in contact with the part being sensed. Temperatures are to be measured during the normal operation tests described in SA14.3 and SA14.4.

SA14.9 revised May 4, 2001

SA14.10 To determine compliance with SA14.8 and SA11.3.1 (b), thermocouples are to be secured at the midpoint of the longitudinal axis of the thermal cutoff body at any point along its circumference. In addition, to determine compliance with SA11.3.1 (b), a thermocouple is to be secured on the stationary contact lead of the thermal cutoff approximately 1 mm from the tip of the insulator cone. Temperatures are to be measured during the steady state condition of the keep warm stages (carafe full, carafe empty, no carafe) of the normal operation test described in SA14.3 and SA14.4.

SA14.10 revised October 31, 1996

SA15 Leakage Current as a Result of Moisture

SA15.1 A drip-type coffee maker shall be conditioned for 48 h in moist air having a relative humidity of 88 \pm 2 percent at a temperature of 32.0 \pm 2.0°C (89.6 \pm 3.6°F). After the conditioning, the sample shall comply with the requirement in 31.1 in a repeat leakage-current test, except that the test may be discontinued when the leakage current stabilizes.

Exception: The leakage current of an appliance incorporating a sheath type heating element shall not exceed 2.5 mA during the first 5 minutes after reaching the leakage current limit of 0.5 mA or 0.75 mA, as applicable, and at the end of this time, the leakage current shall be not more than the 0.5 mA or 0.75 mA limit as applicable – the leakage current is to be monitored during heat-up and cool-down.

SA15.1 revised January 8, 1999

SA15.2 An additional sample of the drip-type coffee maker shall be tested as follows, if glass-fiber sleeving is used as electrical insulation. The sample is to be operated for 96 continuous h under the condition resulting in the maximum temperature on the sleeving, as determined from the normal temperature test, following which it is to be conditioned for 48 h in moist air having a relative humidity of 88 \pm 2 percent at a temperature of 32 \pm 2.0°C (89.6 \pm 3.6°F). After the conditioning, the sample shall comply with the requirement in 31.1 in a repeat leakage-current test, except that the test may be discontinued when the leakage current stabilizes. Following the leakage-current test, the sample shall also comply with the dielectric voltage-withstand test requirement in 35.1.

Exception: The leakage current of an appliance incorporating a sheath type heating element shall not exceed 2.5 mA during the first 5 minutes after reaching the leakage current limit of 0.5 mA or 0.75 mA, as applicable, and at the end of this time, the leakage current shall be not more than the 0.5 mA or 0.75 mA limit as applicable – the leakage current is to be monitored during heat-up and cool-down.

SA15.2 revised January 8, 1999

SA16 Stability

SA16.1 To determine compliance with 26.4, the complete drip-type coffee maker as a unit is to be placed on a plane inclined at an angle of 15° to the horizontal. The unit is to be positioned and loaded with whatever combination of separable components, liquid, basket with saturated grounds, or other media (material) that results in the maximum tendency to overturn under conditions of normal use. Saturated grounds are to be obtained from a normal brewing cycle. The container is to contain a minimum of 5 oz (148 mL) of liquid. The unit is to be prevented from sliding on the inclined surface. The unit shall not overturn.

SA16.2 In addition to the unit not overturning during the test described in SA16.1, the container on units provided with warming plates shall not come off the drip-type coffee maker base as a result of the test.

SA16.3 A container provided with the drip-type coffee maker that has a critical angle of balance of less than 45° and has a capacity of more than 17.5 oz (520 mL) shall withstand the tip-over test described in 26.11, with the following acceptable results:

- a) The average rate of liquid emitted during the first 5 s from the container during any tip over shall not be more than 4-1/2 oz/s (133 mL/s). The average of the average rates of liquid emitted for all tip-overs shall not be more than 3-1/2 oz/s (104 mL/s). The rate shall be computed by using the time period of 5 s.
- b) The lid, if one is provided, shall stay in place.

- c) A container shall not break or crack.

Exception: A container that breaks during this test, but complies with 26.12 without breaking or cracking is acceptable.

SA17 Loading Test

SA17.1 A loading test is to be performed on the mounting brackets of an under-cabinet or wall mounted drip-type coffee maker with the appliance mounted in accordance with the manufacturer's installation instructions, using the hardware and construction as described. A bracket shall not break, loosen, or pull out of the wall nor shall the unit separate from the bracket as a result of this test. The test load is to consist of four times the normal maximum load (full carafe, grounds, basket and the like) and applied as follows: A gradually increasing force is to be applied to act vertically through the center of gravity of the unit. The force is to be increased in a 5 to 10 s interval until a load of four times the weight of the unit is applied to the mounting system (weight of unit plus force of three times the weight of the appliance) and is to be sustained for a period of 1 min. For this test an under-cabinet unit is to be mounted on a wood board with a minimum thickness as specified by the manufacturer and a wall unit is to be mounted on 3/8 inch (4.8 mm) thick wallboard. If the mounting brackets are constructed of a thermoplastic material, they are to be conditioned for 7 h in an air circulating oven maintained at 70°C (158°F) or 10°C (18°F) higher than that measured during the normal temperature test, whichever is higher, prior to performing the loading test.

SA18 Impact Test

SA18.1 The impact test of SA18.2 and SA18.3 are to be conducted on all under-cabinet and wall mounted drip-type coffee makers.

SA18.2 A 1.5 ft-lbf (2.03 J) impact is to be performed on different sections of the enclosure, including the reservoir while the unit is installed under a cabinet or on a wall. The container is to be filled to the maximum recommended level and located on the warming plate for this test. Dislodging of the container or reservoir off the drip-type coffee maker is unacceptable. Each of three samples are to be subjected to one impact. The impact is to be imparted by swinging a 2 inch (50.8 mm) diameter steel sphere, weighing 1.18 lb (0.535 kg) from a height that will produce an impact of 1.5 ft-lbf (2.03 J).

SA18.3 The container is to be subjected to the dynamic stability test outlined in 26.12 and Figure 26.2 except that the container is not to be dislodged off the drip-type coffee maker while the unit is tilted at the maximum angle permitted by the mounting means in various positions of removal or insertion of the unit or 10°, whichever is more.

SA19 Abnormal Operation

SA19.1 General

SA19.1.1 Continuous operation of a drip-type coffee maker under any foreseeable condition of use shall not increase the risk of fire or electric shock to unacceptable levels.

SA19.1.2 To determine compliance with SA19.1.1, a separate burnout or abnormal test is to be conducted with the drip-type coffee maker operating continuously while placed on a softwood test surface covered with two layers of white tissue paper until the ultimate result has been observed. Unless otherwise indicated below, the test is to be conducted with the applied voltage, method of mounting, and the thermostat connections in accordance with 33.1.11 – 33.1.18 and SA14.6. In most cases, continuous operation for 7 – 8 h will be necessary to determine that the ultimate result has been observed.

SA19.1.3 When the drip-type coffee maker is operated under such abnormal conditions, there shall be no flaming or glowing of the enclosure material or material upon which the drip-type coffee maker is placed, and no emission of flames or molten metal (other than drops of melted solder).

SA19.1.4 After having been subjected to an abnormal test, the drip-type coffee maker is considered to involve a risk of electric shock if the current measured through a 500-ohm resistor between an accessible part and ground is more than 5 mA with the input voltage adjusted to 120 V. A solution of hard water (1/2 gram of calcium sulphate, $\text{CaSO}_4 \cdot 2\text{H}_2\text{O}$, per liter of distilled water) in an amount equal to the capacity of the coffee maker, is to be poured into the reservoir and the current is to be measured. Liquid need not be added, if it is obvious that the coffee maker will not hold liquid.

SA19.2 Specific test conditions

SA19.2.1 For most of the common types of drip-type coffee makers, standardized abnormal-test conditions are given in SA19.3.1 – SA19.4.4.1.

SA19.3 Dry operation

SA19.3.1 One sample of a drip-type coffee maker is to be operated three times dry, starting from a cold condition, with all temperature controls connected in the circuit each time. The first two operations are to be terminated after 1 h. The third operation is to continue for 7 or 8 h or until ultimate results occur. A temperature-limiting device shall not operate during this test.

SA19.3.2 The temperature of a regulating thermostat's sensing surface shall not exceed its maximum dry operation temperature rating, T_{dry} , as defined in SA11.1.2.3 with all temperature controls connected in the circuit.

Revised SA19.3.2 effective May 3, 2002

SA19.3.3 To determine compliance with SA19.3.2, thermocouples are to be secured at the periphery of the thermostat that is in contact with the part being sensed. Temperatures are to be measured during the dry operation tests described in SA19.3.1.

SA19.3.4 The test described in SA19.3.1 is to be repeated with all temperature-regulating controls rendered inoperative. The test is to be conducted so that each required limiting-type device is caused to operate in its intended manner.

SA19.4 Overfill

SA19.4.1 General

SA19.4.1.1 To determine that a drip-type coffee maker complies with the requirement in SA19.1.4, it is to be tested as follows:

- a) The drip-type coffee maker is to be supported as intended on a horizontal surface unless filling requires another position. A hard-water solution (see SA19.1.4) is to be poured into the container through an orifice 3/8 inch (9.5 mm) in diameter. The unit is to be first filled with the maximum amount of liquid the reservoir will hold. An additional amount of the solution equal to 50 percent of the volume just mentioned, but not more than 1 pint, (470 cc) is then to be poured into the filled reservoir. An equivalent method that provides the same rate and amount of uniform flow of liquid may be employed. If the unit is provided with a detachable power-supply cord, the cord is to be removed during overfilling. Immediately following the test, the unit is to be emptied. The exterior is to be dried with a soft cloth to remove all surface moisture, including surface moisture from exposed terminal pins. The unit is then to be refilled to the normal level, and the current through a 500-ohm resistor measured as described in SA19.1.4.
- b) In addition, for a drip-type coffee maker in which electrical components are located below the water outlet, the container is to be filled to its normal full level and poured into the water reservoir. The unit is then to be operated as intended, but without the container in place. During the entire cycle, the current through a 500-ohm resistor is to be measured as described in SA19.1.4.

SA19.4.2 Overvoltage

SA19.4.2.1 The drip-type coffee maker reservoir is to be filled to normal capacity with water and the basket is to be filled to normal capacity with coffee grounds or other appropriate brew material. The unit is then to be operated at 110 percent of the voltage as determined from 33.1.11. All temperature controls are to be connected in the circuit. The results are not acceptable if liquid is emitted in other than its intended direction or if water splashes more than 3 inches (76 mm) from the outer perimeter of the material. If a temperature-limiting device operates, the voltage is to be reduced until the device does not operate.

SA19.4.3 Fusible devices

SA19.4.3.1 A fusible device (thermal cutoff or fusible link) shall be capable of opening a circuit in the intended manner without causing the short-circuiting of live parts and without causing live parts to become grounded to the enclosure while the drip-type coffee maker is connected to a circuit having a voltage in accordance with 33.1.11 and operated in the normal position under any single-fault condition that would cause it to open.

SA19.4.3.2 To determine if a drip-type coffee maker with a fusible device complies with the requirements in SA19.4.3.1, five samples of the drip-type coffee maker are to be operated as described in SA19.3.1 with any other thermally operated control device in the appliance short-circuited. If the drip-type coffee maker is provided with more than one thermal cutoff as required by SA11.3.1, the drip-type coffee maker is to be operated with all but one thermal cutoff bypassed. The test sequence is to be repeated as many times as necessary so as to evaluate the operation of each thermal cutoff. During the test the enclosure is to be connected through a 3 A fuse to a supply conductor not containing the thermal cutoff. The A fuse shall not open.

Exception No. 1: A single sample of the drip-type coffee maker may be tested five times with the fusible device being replaced after each test if agreeable to those concerned.

Exception No. 2: The number of fusible devices tested may be reduced by the number of fusible devices that operated (opened) during other abnormal tests, such as the dry-operation test described in SA19.3.2.

SA19.4.4 Water value failure

SA19.4.4.1 To determine that a drip-type coffee maker with a removable reservoir complies with the requirement in SA19.1.4, it is to be tested as follows: The coupling valve in the unit into which the reservoir is inserted is to be caused to fail in such a manner that the reservoir water leaks into the area surrounding the valve. The reservoir is to be filled to the maximum capacity specified by the manufacturer with a hard water solution (see SA19.1.4). When the reservoir is empty a leakage current test is to be performed using a 500 ohm resistor between accessible metal parts and ground. The leakage current shall not exceed 5 mA.

19.5 Restricted water inlet

SA19.5.1 A drip-type coffeemaker employing a removable water reservoir shall comply with SA19.1.3 and SA19.1.4 after it has been subjected to a restricted water flow into the inlet of the hot water generator as described in SA19.5.2 and SA19.5.3.

SA19.5.2 A water flow restricter is to be placed in the water inlet tubing to the hot water generator. The restricter shall be constructed of aluminum having a length of 0.25 inch, an inside diameter of 0.10 inch, and an outside diameter which fits snugly into the water inlet tubing. The removable reservoir is to be filled to maximum capacity with distilled water. The coffee maker is to be operated from a cold start. The unit is to be operated until:

- a) All water has been brewed, or
- b) The temperature regulating device opens and remains open, or
- c) The temperature limiting device opens, or

- d) Other conditions which terminate a brew cycle.

Continued cycling of the temperature regulating control prior to all water being brewed is not considered to be the end of a brew cycle.

SA19.5.3 If the drip-type coffee maker completes the brew cycle, the diameter of the orifice is to be reduced by an increment of 0.005 inch and the test procedure outlined in SA19.5.2 is to be repeated. The orifice diameter is to continue to be reduced in 0.005 inch increments until:

- a) The temperature regulating device opens and remains open, or
- b) The temperature limiting device opens, or
- c) Other conditions which terminate a brew cycle.

SA20 Tests by Manufacturer

SA20.1 Polarization verification

SA20.1.1 If a drip-type coffee maker is provided with a polarized attachment plug (2-wire plug with one blade wider than the other), electrical continuity shall be determined between the grounded supply-circuit conductor of the attachment plug (wide blade of a 2-wire plug) and the part of the coffee maker that is intended to be connected to the grounded supply-circuit conductor. If the continuity cannot be readily determined by visual inspection and component checking, an electrical-continuity test is to be made.

SA20.2 Continuity of grounding connection

SA20.2.1 When a drip-type coffee maker is provided with a grounding-type attachment plug, each coffee maker shall be subjected to an electrical-continuity test between the grounding blade of the attachment plug and all conductive parts that are accessible (only those parts that might present a risk of electric shock).

SA20.3 Indicator

SA20.3.1 Any indicating device such as an ohmmeter, a low-voltage battery-and-buzzer combination, or the like, can be employed in the tests described in SA20.1.1 and SA20.2.1.

SA21 Details

SA21.1 An under-cabinet or wall mounted drip-type coffee maker is to be permanently marked "Do not place any electric or gas-heating appliance beneath this unit". The marking is to be in letters, minimum 3/32 inch (2.4 mm) high, on the front of the appliance. The lettering is to be on a contrasting background, or the letters are to be raised, or the equivalent so that the marking is readily readable.

SA21.2 The date code marking required in 50.1 may be located on the attachment plug of the power-supply cord.

SA21.3 A permanent marking shall be provided on the part of the enclosure that has to be removed to replace or reset a temperature-limiting device. The marking shall include the signal word "WARNING" and the following or the equivalent: "To Reduce the Risk of Fire or Electric Shock, Do Not Remove This Cover. No User Serviceable Parts Inside. Repair Should Be Done By Authorized Service Personnel Only."

Exception: See SA22.1.1 when using graphical symbols.

SA22 Graphical Symbols and Supplemental Marking

SA22.1 No user-serviceable Parts compartment warning

SA22.1.1 The combination of the two graphical symbols (a lightning flash with arrow point within an equilateral triangle, and an exclamation point within an equilateral triangle) and the supplemental marking – "WARNING – RISK OF FIRE OR ELECTRIC SHOCK – DO NOT OPEN" depicted in Figure SA22.1 may be provided on the surface of the appliance enclosure through which the user might gain access to the interior, as an alternative to the marking required by SA21.3.

Figure SA22.1
No user-serviceable parts of compartment warning graphical symbols with supplemental marking

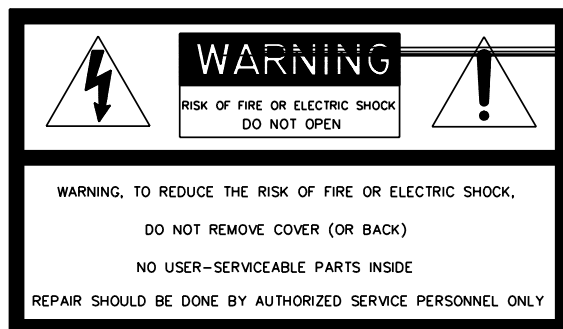
GRAPHICAL SYMBOL
 Lightning flash with arrowpoint within an equilateral triangle – IEC Publication 417 Symbol No. 5036 ("Dangerous Voltage")

SUPPLEMENTAL MARKING
 Precautionary signal word plus text of the supplemental marking

GRAPHICAL SYMBOL
 Exclamation point within an equilateral triangle – IEC Publication 348 Symbol (from Sub-clause 5.3 part a) meaning "... it is necessary for the user to refer to the instruction manual . . ."



A combination of the supplemental marking and the two graphical symbols (lightning flash with arrowpoint within an equilateral triangle, and exclamation point within an equilateral triangle) shall appear on at least one surface of the appliance enclosure through which the user might gain access to the interior. See SA22.3.1. The arrangement shown is an example – placement of the two graphical symbols around the supplemental marking is optional provided both are adjacent to the marking. Other acceptable arrangements include: both on either side, one above and one below, both above, both below, or any other arrangement that conveys the same intent to the user.



INSTRUCTION MANUAL MARKING
 The two graphical symbols with the supplemental marking and a full text explanatory notice shall appear on the cover page, the reverse side of the cover page, or the very next page of the instruction manual packaged with the appliance. The arrangement depicted is an example. Other arrangements may be acceptable provided the same intent is conveyed to the user. See SA22.5.1 and SA22.5.2.



ALTERNATE GRAPHICAL SYMBOL
 As an alternate to the basic graphical symbol of a lightning flash with arrowpoint within an equilateral triangle, a stylization composed of the IEC Publication 417 Symbol No. 5036 superimposed across a graphical representation of a person may be used.

SA22.2 Graphical symbol size and color

SA22.2.1 A required graphical symbol shall be permanent and comply with the applicable specifications contained in this section. It shall either:

- a) Be printed directly on the appliance (or on an attached label), or
- b) Be molded or stamped in the enclosure surface to which it is required to be applied.

The color of a graphical symbol that is printed on the product (or on an attached label) shall contrast with the color of the surrounding surface. The provision of color contrast is preferred, but not required, for a graphical symbol that is molded or stamped in a material. Portions of a molded or stamped graphical symbol that are not in a color contrasting with the background color, shall have a depth or raised height of at least 0.010 inch (0.25 mm) to provide contrast and definition. See Figure SA22.2.

SA22.3 Supplemental marking size and color

SA22.3.1 A required supplemental marking (the marking that is accompanied by graphical symbols) shall be permanent and comply with the applicable specifications contained in this section. It shall either:

- a) Be printed directly on the appliance (or on an attached label), or
- b) Be molded or stamped in the enclosure surface to which it is required to be applied.

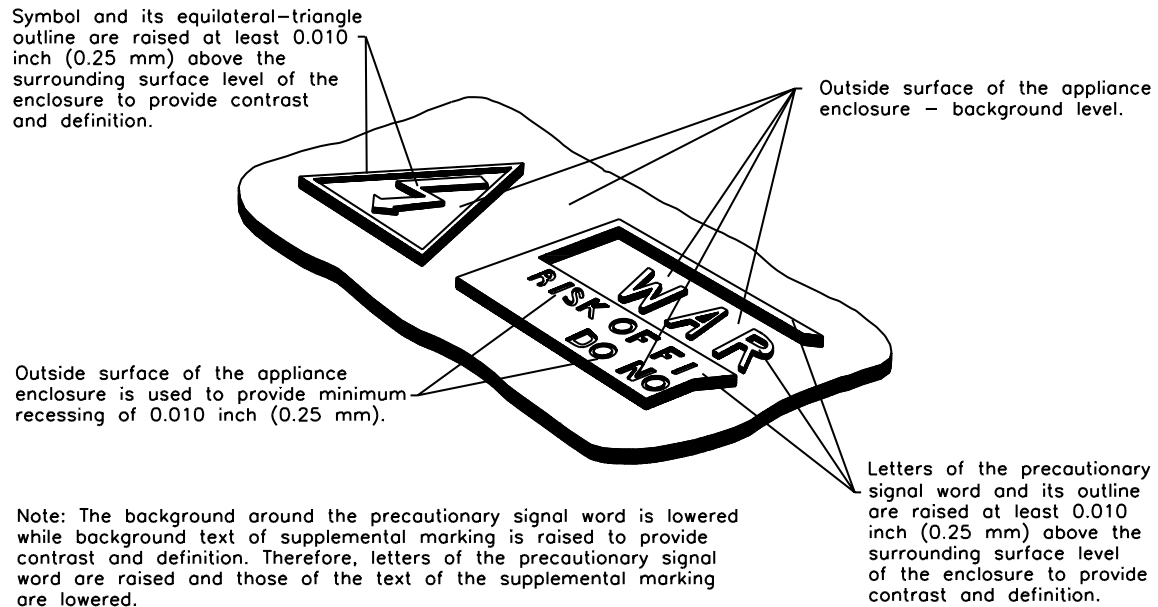
SA22.3.2 For a supplemental marking that is printed on the appliance (or on an attached label), the precautionary signal word "WARNING" shall be in letters not less than 1/16 inch (1.6 mm) high. The other words "RISK OF FIRE OR ELECTRIC SHOCK – DO NOT OPEN" which form the text of the supplemental marking shall be in letters not less than 1/32 inch (0.8 mm) high. The color of the signal-word letters shall contrast with the color of their background, and with the letters of the text. For example, if the signal-word letters are orange colored against a brown background, the letters of the text shall be brown colored against an orange background. Conversely, if the signal-word letters are brown colored against an orange background, the letters of the text shall be orange colored against a brown background. The inherent color or the base material on which the supplemental marking is printed may be used as one of the two contrasting colors required to generate this marking.

SA22.3.3 For a supplemental marking that is molded or stamped in a material, the provision of color contrast is preferred, but not required. If a molded or stamped supplemental marking is provided with color contrast, the requirements in SA22.3.2 shall apply.

SA22.3.4 If a molded or stamped marking is not in a color contrasting with the background color, the precautionary signal word "WARNING" shall be in letters not less than 3/32 inch (2.4 mm) high; the other words "RISK OF FIRE OR ELECTRIC SHOCK – DO NOT OPEN" that form the text of the supplemental marking shall be in letters not less than 1/16 inch (2.4 mm) high. The letters of the signal word against their surrounding background surface, and the letters of the text against their background, shall have a depth or raised height of at least 0.010 inch (0.25 mm). If the signal-word letters are raised with respect to their background, the text letters shall be lowered with respect to their background. If the signal-word letters are lowered with respect to their background, the text letters shall be raised with respect to their background. The plane of the surface in which the supplemental marking is stamped or molded may serve as one of the raised or lowered reference planes required to generate this marking. See Figure SA22.2.

Figure SA22.2
Example of a molded/stamped graphical symbol and supplemental marking without color contrast

Figure SA22.2 revised November 22, 1996



S1964A

SA22.4 Size of outlines and symbols

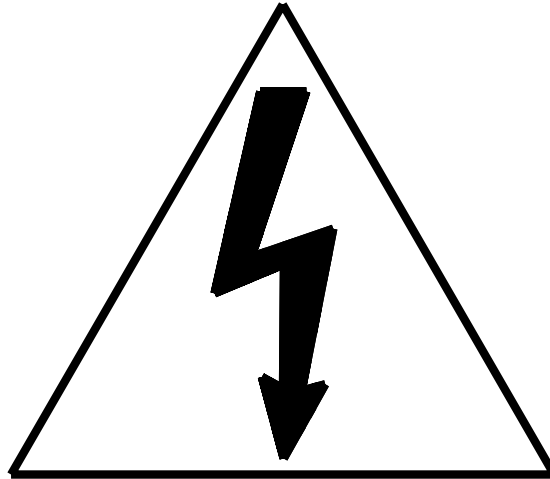
SA22.4.1 The width and height of the outline around the supplemental marking shall be geometrically proportional to the letter sizes described in SA22.3.2 and SA22.3.4. The equilateral triangles that are a part of the graphical symbols shall have a height not less than 3/8 inch (9.5 mm). The exact dimensions of the symbols within the triangles are not specified, but they shall be similar to that shown in Figure SA22.1 and in proportion to the height of the triangles.

SA22.5 Explanation of graphical symbols in the operating instructions

SA22.5.1 The operating instructions accompanying the appliance shall include an illustration of the graphical symbols marked on the appliance, and an explanation of their meaning; for example, see the symbols on the next page.

SA22.5.1 revised May 4, 2001

SA22.5.2 The combination of the two graphical symbols and supplemental marking required by SA22.1.1 plus the word "WARNING", and the following statement, or the equivalent: "TO REDUCE THE RISK OF FIRE OR ELECTRIC SHOCK, DO NOT REMOVE THIS COVER. NO USER-SERVICEABLE PARTS INSIDE. REPAIR SHOULD BE DONE BY AUTHORIZED SERVICE PERSONNEL ONLY", shall appear on the cover page, the reverse side of the cover page, or the very next page of the instruction manual. See Figure SA22.1.



SA1965

The lightning flash with arrowhead symbol, within an equilateral triangle, is intended to alert the user to the presence of uninsulated "dangerous voltage" within the product's enclosure that may be of sufficient magnitude to constitute a risk of fire or electric shock to persons.



UL0004

The exclamation point within an equilateral triangle is intended to alert the user to the presence of important operating and maintenance (servicing) instructions in the literature accompanying the appliance.

SA22.5.3 With regard to the location of the markings required in SA22.5.2 :

- a) A cover page, its reverse side, or the next following page that is intended to be unfolded before reading is to be considered as only one page regardless of how page numbers are designated thereon by the manufacturer.
- b) Instructions that are located on either side of a single sheet (leaf), and which may or may not be folded in some manner thereby producing the effect of multiple discrete pages is considered acceptable.

SA23 Important Safeguards

SA23.1 The following or equivalent statements that apply to a particular drip-type coffee maker construction shall be in the instruction manual:

IMPORTANT SAFEGUARDS

When using electrical appliances, basic safety precautions should always be followed to reduce the risk of fire, electric shock, and/or injury to persons including the following:

1. Read all instructions.
2. Do not touch hot surfaces. Use handles or knobs.
3. To protect against electric shock, do not place cord, plugs, or appliance in water or other liquid.
4. Close supervision is necessary when any appliance is used by or near children.
5. Unplug from outlet when not in use and before cleaning. Allow to cool before putting on or taking off parts, and before cleaning the appliance.
6. Do not operate any appliance with a damaged cord or plug or after the appliance malfunctions, or has been damaged in any manner. Return appliance to an authorized service facility for examination, repair or adjustment.
7. The use of an accessory not evaluated for use with this appliance may cause injuries.
8. Do not use outdoors.
9. Do not let cord hang over edge of table or counter, or touch hot surfaces.
10. Do not place on or near a hot gas or electric burner, or in a heated oven.
11. Always attach plug to appliance first, then plug cord into the wall outlet. To disconnect, turn any control to the off position, then remove plug from wall outlet. (Applies to an appliance with detachable power-supply cord only.)
12. Do not use appliance for other than intended use.
13. (Special instruction covering lid placement and removal on appliances requiring lids. Wording may vary.)

14. Appliances with Glass Containers

- A. The container is designed for use with this appliance. It must never be used on a range top. (Unless specific instructions for use on a range top are provided and include the precautions to be observed.)
- B. Do not set a hot container on a set or cold surface.
- C. Do not use a cracked container or a container having a loose or weakened handle.
- D. Do not clean container with cleansers, steel wool pads, or other abrasive material.

15. Under-Cabinet and Wall-Mounted Drip-Type Coffee Makers

- A. To reduce the risk of fire or electric shock, do not place any electric or gas-heating appliance beneath the drip-type coffee maker.
- B. To reduce the risk of fire, do not mount unit over or near any portion of a heating or cooking appliance.

16. SAVE THESE INSTRUCTIONS.

SA23.2 Instructions required by other paragraphs of this Standard are not to be included with the Important Safeguards.

SA23.3 A cautionary marking required to be on a drip-type coffee maker shall be repeated in its entirety in the instruction manual. The marking may be included in the Important Safeguards.

SA24 User Maintenance

SA24.1 The instruction manual shall:

- a) Include instructions for operating, cleaning, and user maintenance and
- b) Warn a user that servicing should be performed by an authorized service facility.

SA24.2 Instructions for mounting an under-cabinet or wall mounted drip-type coffee maker shall be provided. The actual instructions shall be located on the appliance or in the literature packed with the appliance. The actual instructions shall not be in the Important Safeguards, however, there may be a reference to them in the Important Safeguards (such as "Wall or under-the-cabinet mounting should follow the directions in the installation instructions").

No Text on This Page

Standards for Components

Standards under which components of the products covered by this standard are evaluated include the following:

Title of Standard – UL Standard Designation

Attachment Plugs and Receptacles – UL 498
Cord Sets and Power-Supply Cords – UL 817
Flexible Cord and Fixture Wire – UL 62
Polymeric Materials – Long Term Property Evaluations – UL 746B
Polymeric Materials – Short Term Property Evaluations – UL 746A
Polymeric Materials – Use in Electrical Equipment Evaluations – UL 746C
Switches, Special-Use – UL 1054
Tape, Polyvinyl Chloride Polyethylene and Rubber Insulating – UL 510
Temperature-Indicating and -Regulating Equipment – UL 873
Terminals, Electrical Quick-Connect – UL 310
Thermal Cutoffs for Use in Electrical Appliances and Components – UL 1020
Tubing, Extruded Insulating – UL 224
Wire Connectors and Soldering Lugs for Use With Copper Conductors – UL 486A
Wires and Cables, Rubber-Insulated – UL 44
Wires and Cables, Thermoplastic-Insulated – UL 83

No Text on This Page

**Superseded requirements for
the Standard for
Household Electric Coffee Makers and Brewing-Type Appliances**

UL 1082, Fifth Edition

The requirements shown are the current requirements that have been superseded by requirements in revisions issued for this Standard. To retain the current requirements, do not discard the following requirements until the future effective dates are reached.

SA14.7 A regulating thermostat shall not be subjected to temperatures in excess of the sum of its established normal override temperature and its maximum assigned set-point temperature during normal operation.

SA19.3.2 A regulating thermostat shall not be subjected to temperatures in excess of the sum of its established dry override temperature and its maximum assigned set-point temperature during dry operation with all temperature controls connected in the circuit.

No Text on This Page